

Eastman®

---

**THE EASTMAN®**  
**Automated Cutting Tools**

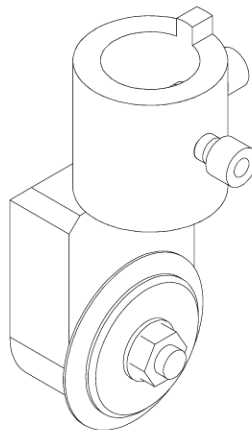
**Illustrated Parts List**

Round Knife Assembly

Drag Knife Assembly

Hole Punch Assembly

Slitter Knife Assembly



"V" Notch Assembly

1" Drag Knife Assembly

1" (28mm)  
Round Knife Assembly  
(Shown)

X-Acto Drag Knife Assembly

Corner Punch Assembly

Tool Changing Stations & Depth Scale Assembly

"V" Knife Cutter Assembly

Carpet Cutter Assembly

---

**Eastman®**

Over a Century of Cutting Expertise

# Table of Contents

Tool Adapters .....	3
Tool Changing Stations & Tool Depth Scale .....	4
1" (28mm) Round Knife Assembly .....	5
2" (45mm) Round Knife Assembly .....	6
2" (45mm) Wave Knife Assembly .....	7
2" (45mm) Pinking Knife Assembly .....	7
2.36" (60mm) Round Knife Assembly .....	8
2.36" (60mm) Extended Round Knife Assembly .....	9
2.36" (60mm) Round Knife Assembly (Short) .....	10
3" (75mm) Extended Round Knife Assembly .....	11
3" (75mm) Round Knife Assembly .....	11
Extended Drag Knife Assembly .....	12
Extended X-Acto Drag Knife Assembly .....	13
Extended Slitter Knife Assembly .....	13
Hole Punch Assembly .....	14
Punch Sizing Chart .....	14
Heavy Duty Hole Punch Assembly .....	15
Corner Punch Assembly .....	16
"V" Notch Punch Assembly .....	16
Adjustable Carpet Cutter Assembly .....	17
80o V-Knife Cutter Assembly .....	18
1" Tall Drag Knife Assembly .....	19
Drill Tool Assembly .....	19
Depth Limiting Drill Tool Assembly .....	20
Fly Cutter Assembly .....	21
Pin Perforating Assembly .....	22
45° Angle Plunge Assembly .....	23
Wire Brush Buffing Assembly .....	24
Perforating Round Blades .....	24

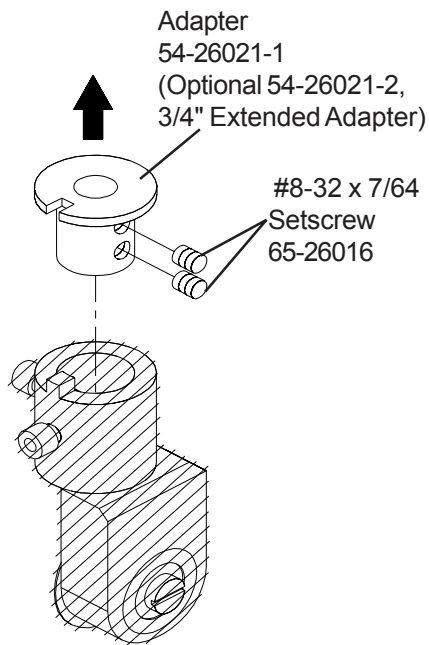
 **IMPORTANT**

The purchaser must instruct all operators on the proper use of the equipment. All standard industrial safety measures and equipment should be provided to protect the operator. Operators must be cautioned that improper or careless use of this equipment may cause personal injury. If you do not have qualified operators to instruct new persons, contact your Eastman sales representative or Eastman factory direct.

Disconnect electrical power source before proceeding with any installation, adjustment or repair of the Automated Cutting System.

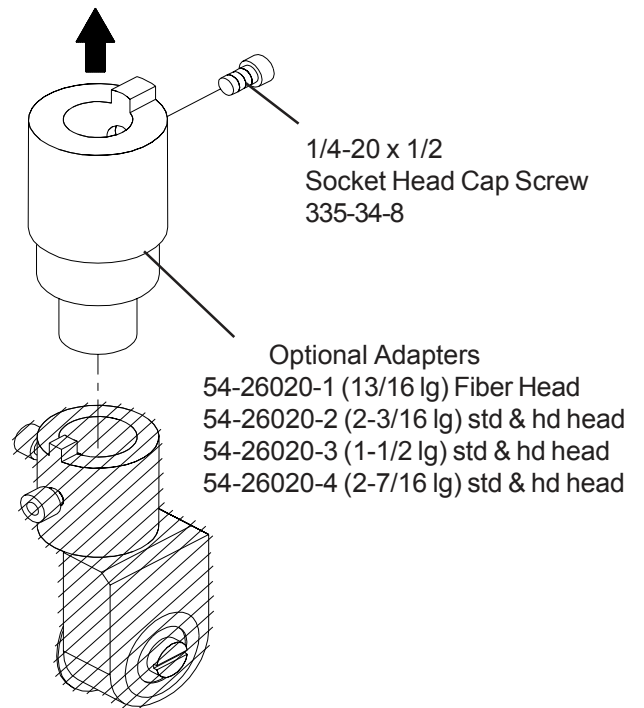
# Tool Adapters

To  
Tool Head Spindle



Adapter for:  
Standard Tool Head (All Types)

To  
Tool Head Spindle

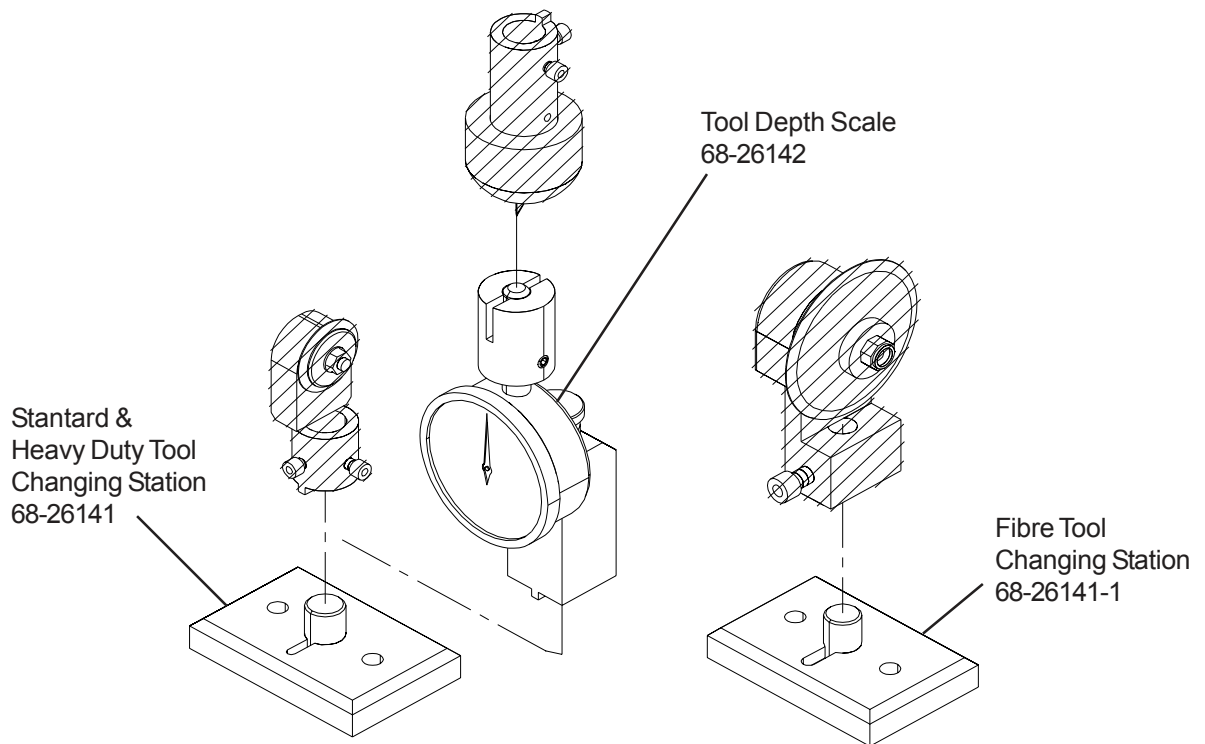


Adapter for:  
The Use of Standard Tools on a  
Fiber Cutter Tool Head Only

**Eastman®**

*Over a Century of Cutting Expertise*

# ***Tool Changing Stations & Tool Depth Scale***



# Tool Options

## 1" (28mm) Round Knife Assembly H9-30069

ITEM	PART No.	DESCRIPTION	QTY
1	54-26225	Knife Bolt	1
2	54-26098-1	Knife Holder, 1"	1
3	67-26099	Bearing, Special	2
4	54-26099	Limiting Disc (std)	2
	54-26430	.010 Limiting Disc (option)	2
	54-26387	.015 Limiting Disc (option)	2
	54-26431	.020 Limiting Disc (option)	2
	54-26101	.030 Limiting Disc (option)	2
	54-26101-1	.030 Limiting Disc, Wide(option)	2
	54-26451	.040 Limiting Disc (option)	2
	54-26100	.050 Limiting Disc (std option)	2
	54-26100-1	.050 Limiting Disc, Wide(option)	2
	54-26394	.060 Limiting Disc (std option)	2
	54-26395	.070 Limiting Disc (option)	2
*5	C280	1" (28 mm) Round Knife	1
6	211-M4	Stop Nut, M-4	1
7	335-93-6	Screw, Socket Hd. 8-32 x 3/8	2

\* includes 2 per pack

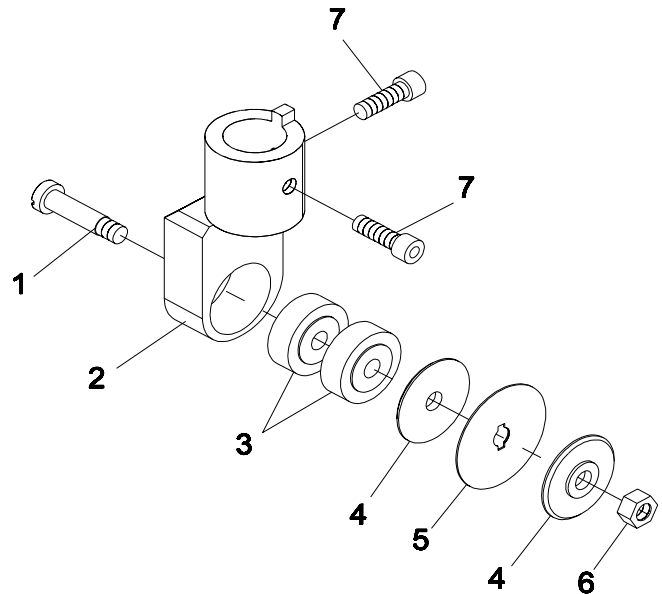
### \* Adapters not Included

Required Adapters for use with each Tool Spindle:	
Standard Tool Head (all types) .....	54-26021-1
Heavy Duty Tool Head .....	Not Required
Fiber Cutter Tool Head .....	54-26020-3



### Caution

Improper depth limiters may cause damage to the cutting surface.



### Warning

Always handle knives with care.  
Safely dispose of used knife.

**Blade Changing Station 68-26141 Optional**

**Eastman®**

*Over a Century of Cutting Expertise*

# Tool Options

## 2" (45mm) Round Knife Assembly H9-30070

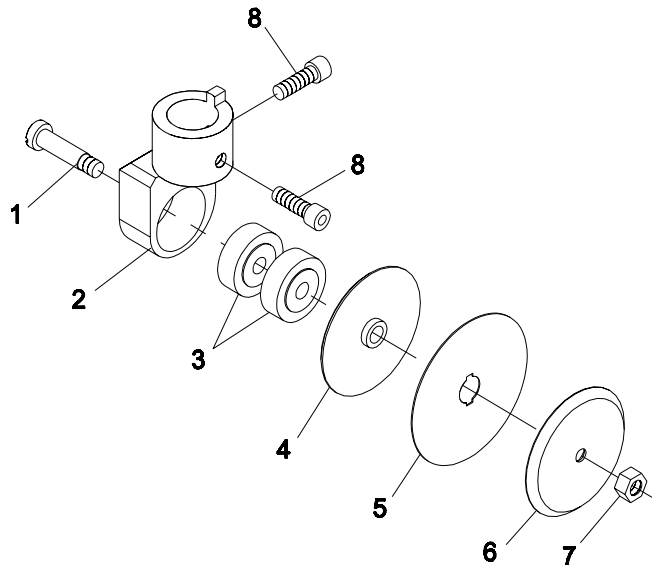
ITEM	PART No.	DESCRIPTION	QTY
1	54-26225	Knife Bolt	1
2	54-26102	Knife Holder, 2"	1
3	67-26099	Bearing, Special	2
4	54-26103	.135 Limit Mntg Disc (std)	1
	54-26374	.010 Limit Mntg Disc (option)	1
	54-26432	.015 Limit Mntg Disc (option)	1
	54-26434	.020 Limit Mntg Disc (option)	1
	54-26105	.025 Limit Mntg Disc (option)	1
	54-26447	.030 Limit Mntg Disc (std option)	1
	54-26106	.040 Limit Mntg Disc (option)	1
	54-26106-1	.040 Limit Wide Mntg Disc	1
	54-26449	.045 Limit Mntg Disc (option)	1
	54-26399	.050 Limit Mntg Disc (std option)	1
	54-26348	.060 Limit Mntg Disc (option)	1
	54-26348-1	.060 Limit Wide Mtg Disc	1
	54-26445	.070 Limit Mtg Disc (std option)	1
	54-26969	.100 Limit Mtg Disc (option)	1
	54-27025	.312 Limit Mtg Disc (option)	1
	54-27894	.380 Limit Mtg Disc (option)	1
	54-26918	.438 Limit Mtg Disc, Max(option)	1
5	C450	2" (45 mm) Round Knife	1
6	54-26104	.135 Limit Clamp Disc (std)	1
	54-26375	.010 Limit Clp Disc (option)	1
	54-26433	.015 Limit Clp Disc (option)	1
	54-26435	.020 Limit Clp Disc (option)	1
	54-26107	.025 Limit Clp Disc (option)	1
	54-26448	.030 Limit Clp Disc (std option)	1
	54-26108	.040 Limit Clp Disc (option)	1
	54-26108-1	.040 Limit Wide Clp Disc	1
	54-26450	.045 Limit Clp Disc (option)	1
	54-26400	.050 Limit Clp Disc (std option)	1
	54-26349	.060 Limit Clp Disc (option)	1
	54-26349-1	.060 Limit Wide Clp Disc(option)	1
	54-26446	.070 Limit Clp Disc (std option)	1
	54-26970	.100 Limit Clp Disc (option)	1
	54-27026	.312 Limit Clp Disc (option)	1
	54-27895	.380 Limit Clp Disc (option)	1
	54-26919	.438 Limit Clp Disc, Max(option)	1
7	211-M4	Stop Nut, M-4	1
8	335-93-6	Screw, Socket Hd. 8-32 x 3/8	2

**\* Adapters not Included**

Required Adapters for use with each Tool Spindle:  
 Standard Tool Head (all types) ..... 54-26021-1  
 Heavy Duty Tool Head ..... Not Required  
 Fiber Cutter Tool Head ..... 54-26020-3

**⚠ Caution**

Improper depth limiters may cause damage to the cutting surface.



**⚠ Warning**

Always handle knives with care.  
 Safely dispose of used knife.

**Blade Changing Station 68-26141 Optional**

# Tool Options

## 2" (45mm) Pinking Knife Assembly

H9-30076

ITEM	PART No.	DESCRIPTION	QTY
1	54-26225	Knife Bolt	1
2	54-26102	Knife Holder, 2"	1
3	67-26099	Bearing, Special	2
4	54-26424	Pinking Blade Mound Disk	1
5	67-02954	2" (45 mm) Pinking Blade	1
6	54-26425	Pinking Blade Clamp Disc	1
7	211-M4	Stop Nut, M-4	1
8	335-93-6	Screw, Socket Hd. 8-32 x 3/8	2

**\* Adapters not Included**

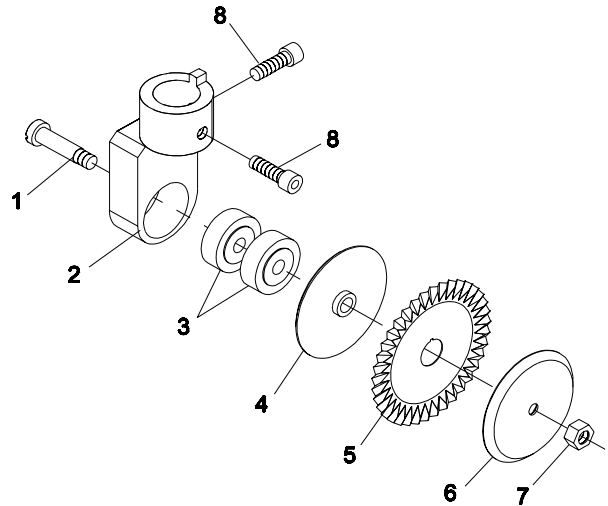
Required Adapters for use with each Tool Spindle:  
 Standard Tool Head (all types) ..... 54-26021-1  
 Heavy Duty Tool Head ..... Not Required  
 Fiber Cutter Tool Head ..... 54-26020-3

Pinking Blade Pattern



**Warning**

Always handle knives with care.  
 Safely dispose of used knife.



*Blade Changing Station 68-26141 Optional*

## 2" (45mm) Wave Knife Assembly

H9-30077

ITEM	PART No.	DESCRIPTION	QTY
1	54-26225	Knife Bolt	1
2	54-26102	Knife Holder, 2"	1
3	67-26099	Bearing, Special	2
4	54-26424	Pinking Blade Mound Disk	1
5	67-02955	2" (45 mm) Wave Pinking Blade	1
6	54-26425	Pinking Blade Clamp Disc	1
7	211-M4	Stop Nut, M-4	1
8	335-93-6	Screw, Socket Hd. 8-32 x 3/8	2

**\* Adapters not Included**

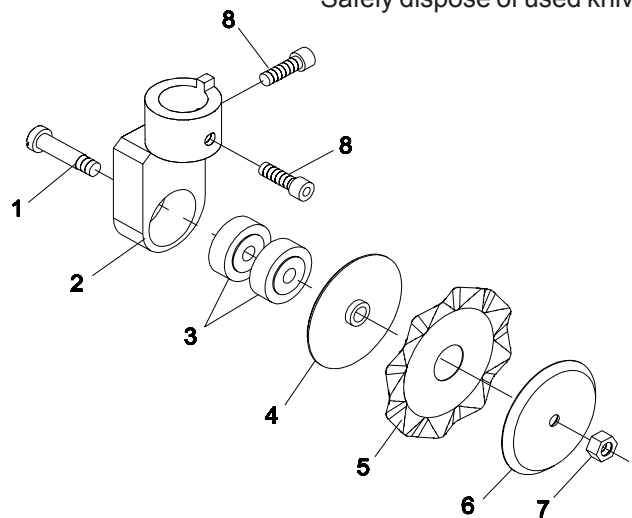
Required Adapters for use with each Tool Spindle:  
 Standard Tool Head (all types) ..... 54-26021-1  
 Heavy Duty Tool Head ..... Not Required  
 Fiber Cutter Tool Head ..... 54-26020-3

Wave Blade Pattern



**Warning**

Always handle knives with care.  
 Safely dispose of used knife.



*Blade Changing Station 68-26141 Optional*

**Eastman®**

*Over a Century of Cutting Expertise*

# Tool Options

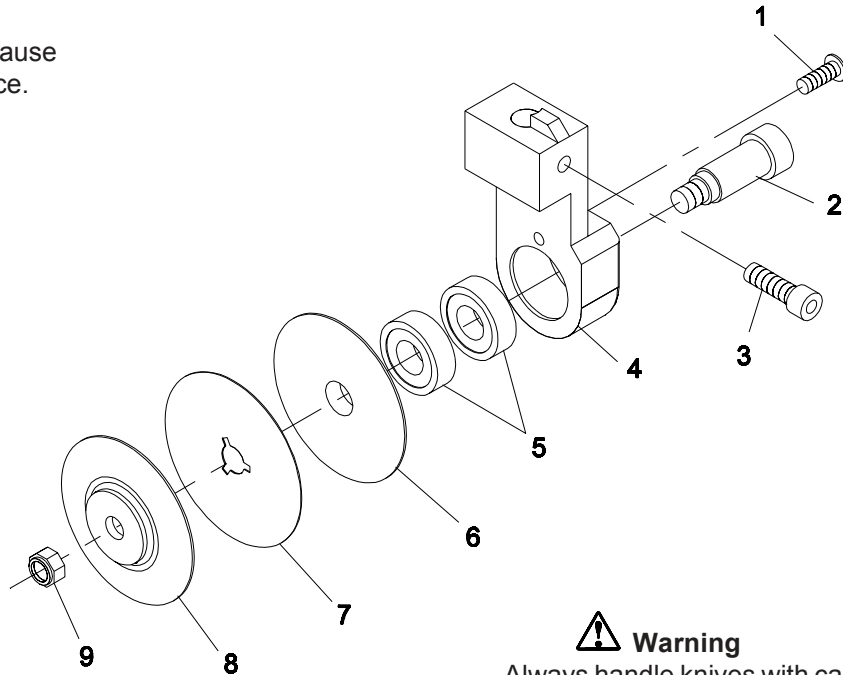
## 2.36" (60mm) Round Knife Assembly H9-30072

Tools for Fiber Cutter Tool  
Head Only

ITEM	PART No.	DESCRIPTION	QTY
1	318-102-6	Screw, Pan Hd, #10-32 x 3/8	1
2	54-26086	Knife Clamp Bolt	1
3	337-34-8	Screw, Socket 1/4-20 x 1/2	1
4	54-26083	Knife Holder, 3"	1
5	67-26087	Bearing, Special	2
6	54-26122	.035 Limit Mounting Disc	1
	54-26122-1	.075 Limit Mounting Disc	1
7	67-26063	2.36" (60 mm) Round Knife	1
8	54-26121	.035 Limit Clamp Disc	1
	54-26121-1	.075 Limit Clamp Disc	1
9	211-36	Stop Nut, 5/16-18	1

**\*Adapters not Required**

**⚠ Caution**  
Improper depth limiters may cause damage to the cutting surface.



**⚠ Warning**  
Always handle knives with care.  
Safely dispose of used knife.

**Blade Changing Station 68-26141-1 Optional**



# Tool Options

## 2.36" (60mm) Extended Round Knife Assembly H9-30073

Tools for Fiber Cutter  
Tool Head with  
Gantry Lift Kits "Only"

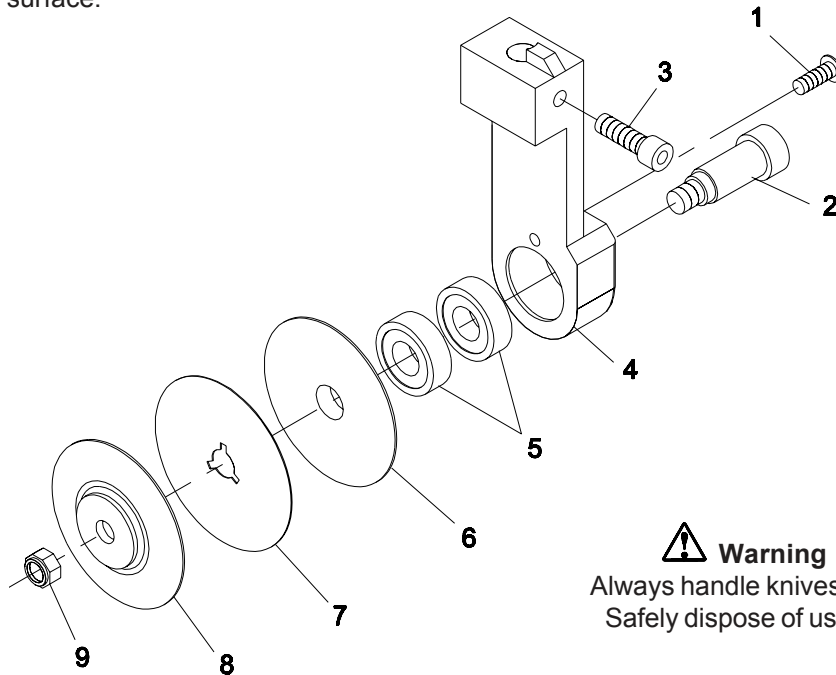
ITEM	PART No.	DESCRIPTION	QTY
1	318-102-6	Screw, Pan Hd, #10-32 x 3/8	1
2	54-26086	Knife Clamp Bolt	1
3	337-34-8	Screw, Socket 1/4-20 x 1/2	1
4	54-26083-1	Knife Holder, 3" Extended	1
5	67-26087	Bearing, Special	2
6	54-26122	.035 Limit Mounting Disc	1
	54-26122-1	.075 Limit Mounting Disc	1
7	67-26063	2.36" (60 mm) Round Knife	1
8	54-26121	.035 Limit Clamp Disc	1
	54-26121-1	.075 Limit Clamp Disc	1
9	211-36	Stop Nut, 5/16-18	1

\*Adapters not Required



**Caution**

Improper depth limiters may cause damage to the cutting surface.



**Warning**

Always handle knives with care.  
Safely dispose of used knife.

Blade Changing Station 68-26141-1 Optional

**Eastman®**

Over a Century of Cutting Expertise

# Tool Options

## 2.36" (60mm) Round Knife Assembly (Short)

H9-30094

ITEM	PART No.	DESCRIPTION	QTY
1	54-26225	Knife Bolt	1
2	54-26973	Knife Holder, Short, 3"	1
3	67-26099	Bearing, Special	2
4	54-26974	Max Limit Mntg Disc (std)	1
5	67-26063	2.36" (60 mm) Round Knife	1
6	54-26975	Max Limit Clp Disc (std)	1
7	211-M4	Stop Nut, M-4	1
8	335-93-6	Screw, Socket Hd. 8-32 x 3/8	2

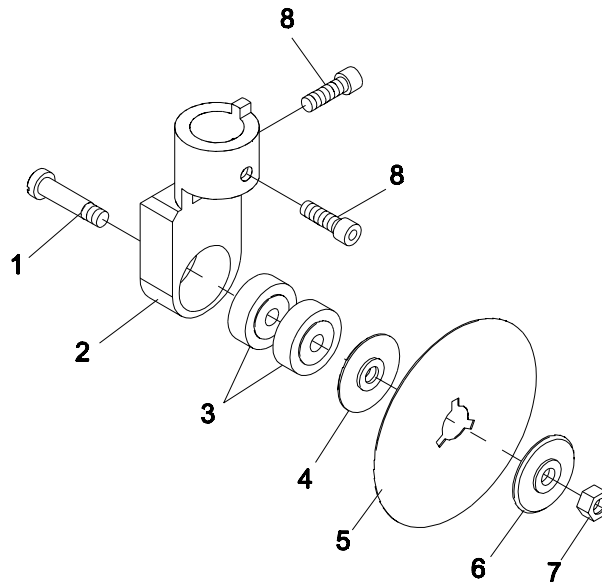
**\* Adapters not Included**

Required Adapters for use with each Tool Spindle:	
Standard Tool Head (all types) .....	54-26021-1
Heavy Duty Tool Head .....	Not Required
Fiber Cutter Tool Head .....	54-26020-3



**Caution**

Improper depth limiters may cause damage to the cutting surface.



**Warning**

Always handle knives with care.  
Safely dispose of used knife.

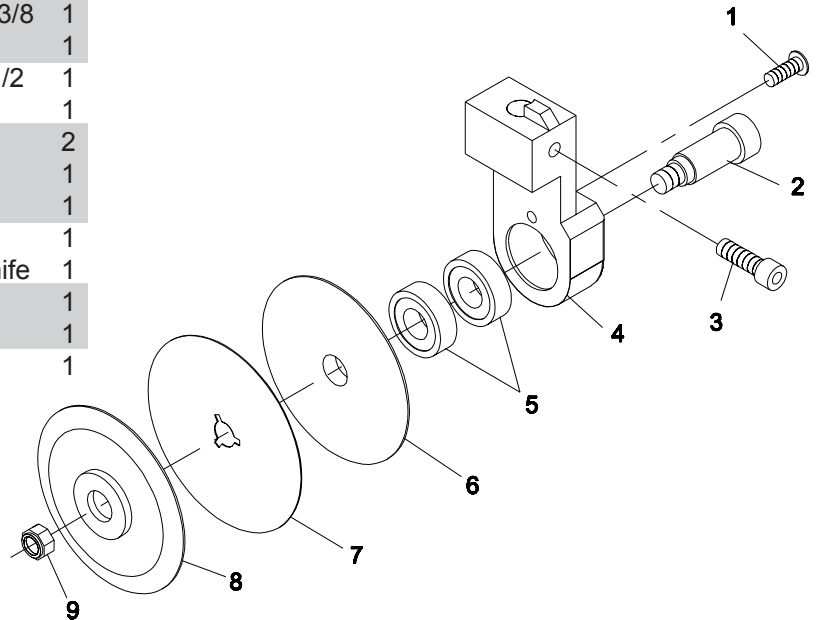
**Blade Changing Station 68-26141 Optional**

# Tool Options

## 3" (75mm) Round Knife Assembly H9-30074

Tools for Fiber Cutter  
Tool Head Only

ITEM	PART No.	DESCRIPTION	QTY
1	318-102-6	Screw, Pan Hd, #10-32 x 3/8	1
2	54-26086	Knife Clamp Bolt	1
3	337-34-8	Screw, Socket 1/4-20 x 1/2	1
4	54-26083	Knife Holder, 3"	1
5	67-26087	Bearing, Special	2
6	54-26084	.035 Limit Mounting Disc	1
	54-26084-1	.075 Limit Mounting Disc	1
7	67-26119	3" (75 mm) Round Knife	1
	67-26119 M2	3" (75 mm) M2 Round Knife	1
8	54-26085	.035 Limit Clamp Disc	1
	54-26085-1	.075 Limit Clamp Disc	1
9	211-36	Stop Nut, 5/16-18	1



\*Adapters not Required



**Caution**  
Improper depth limiters may cause damage to the cutting surface.

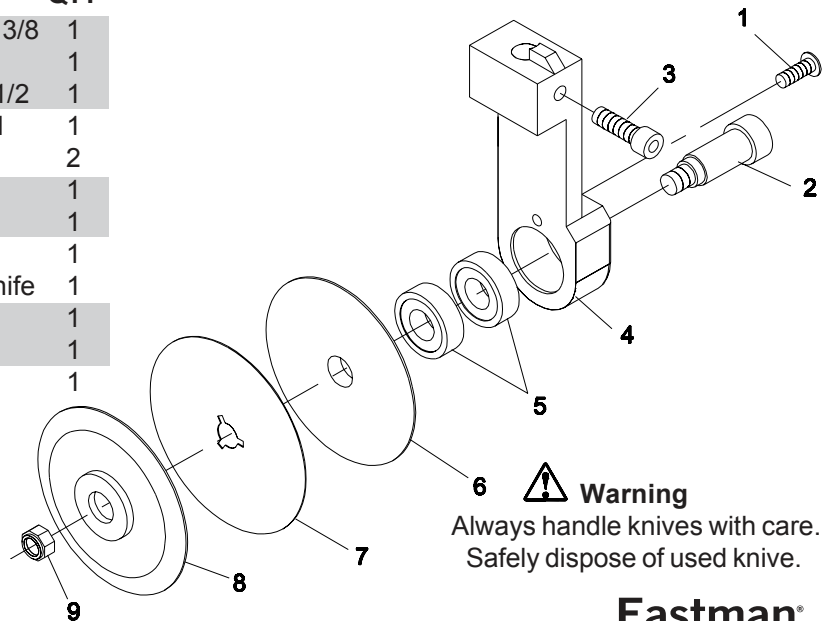
Blade Changing Station 68-26141-1 Optional

# Tool Options

## 3" (75mm) Extended Round Knife Assembly H9-30075

Tools for Fiber Cutter  
Tool Head with  
Gantry Lift Kits "Only"

ITEM	PART No.	DESCRIPTION	QTY
1	318-102-6	Screw, Pan Hd, #10-32 x 3/8	1
2	54-26086	Knife Clamp Bolt	1
3	337-34-8	Screw, Socket 1/4-20 x 1/2	1
4	54-26083-1	Knife Holder, 3" Extended	1
5	67-26087	Bearing, Special	2
6	54-26084	.035 Limit Mounting Disc	1
	54-26084-1	.075 Limit Mounting Disc	1
7	67-26119	3" (75 mm) Round Knife	1
	67-26119 M2	3" (75 mm) M2 Round Knife	1
8	54-26085	.035 Limit Clamp Disc	1
	54-26085-1	.075 Limit Clamp Disc	1
9	211-36	Stop Nut, 5/16-18	1



\*Adapters not Required



**Caution**  
Improper depth limiters may cause damage to the cutting surface.



**Warning**  
Always handle knives with care.  
Safely dispose of used knife.

Blade Changing Station 68-26141-1 Optional

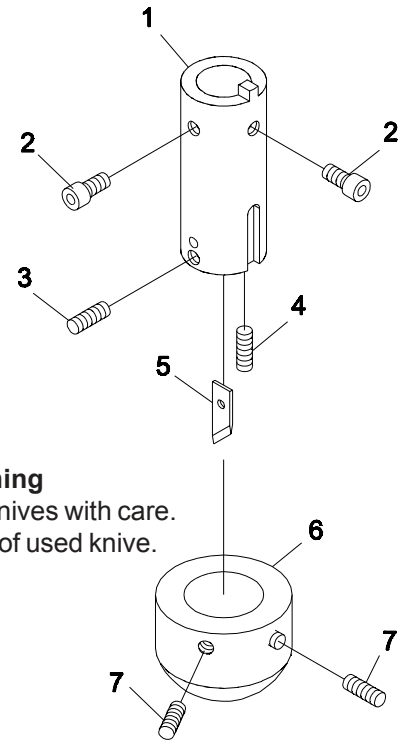
**Eastman®**

Over a Century of Cutting Expertise

# Tool Options

## Extended Drag Knife Assembly

- H9-30051-1 (.02 Thick x 30 Degree Angle)
- H9-30052-1 (.04 Thick x 30 Degree Angle)
- H9-30053-1 (.02 Thick x 45 Degree Angle)
- H9-30054-1 (.04 Thick x 45 Degree Angle)
- H9-30057-1 (.04 Thick x 55 Degree Angle)
- H9-30058-1 (.02 Thick x 55 Degree Angle)



**Warning**  
 Always handle knives with care.  
 Safely dispose of used knife.

ITEM	PART No.	DESCRIPTION	QTY
1	54-26111-1	Drag Knife Holder, Extended	1
2	335-93-6	Screw, Socket Hd. 8-32 x 3/8	2
3	347-93-5	Setscrew, 8-32 x 5/16	1
4	348-94-12	Setscrew, #8-36 x 3/4	1
5	54-26011-1	Drag Knife, .02 thk x 30 deg	1
	54-26011	Drag Knife, .04 thk x 30 deg	1
	54-26011-2	Drag Knife, .02 thk x 45 deg	1
	54-26011-3	Drag Knife, .04 thk x 45 deg	1
	54-26011-5	Drag Knife, .02 thk x 55 deg	1
	54-26011-4	Drag Knife, .04 thk x 55 deg	1
6	54-26112	Drag Knife Foot (std)	1
	54-26112-1	Drag Knife Foot Carpet Style (optional)	1
	54-26112-W	Drag Knife Foot, Wide (optional)	1
7	347-93-5	Setscrew, Brass Tip#8-32 x 5/162	

### Optional Blade Styles

ITEM	PART No.	DESCRIPTION	QTY
5	54-26862-3020	Flat Tip, .02 thk x 30 deg	1
	54-26862-3040	Flat Tip, .04 thk x 30 deg	1
	54-26862-4520	Flat Tip, .02 thk x 45 deg	1
	54-26862-4540	Flat Tip, .04 thk x 45 deg	1
	54-26862-5520	Flat Tip, .02 thk x 55 deg	1
	54-26862-5540	Flat Tip, .05 thk x 55 deg	1
	54-27298	Drag Knife, .038/30/.68 w/Hole	1
	54-27298-1	Drag Knife, .020/30/.68 w/Hole	1
	54-27298-2	Drag Knife, .020/45/.68 w/Hole	1
	54-27298-3	Drag Knife, .038/45/.68 w/Hole	1
	54-27298-4	Drag Knife, .040/55/.79 w/Hole	1
	54-27298-5	Drag Knife, .020/55/.79 w/Hole	1

ref: thk/angle/length

**\* Adapters not Included**

Optional Knife Material & Surface Treatments Available.

To order M2 steel knife material add "M2" after the part number.

To order M2 steel knife material with -Z- Surface Treatment add "M2Z" after the part number.

To order VC Carbide knife material add "VC" after the part number.

**Blade Changing Station 68-26141 Optional**

<b>Required Adapters for use with each Tool Spindle:</b>	
Standard Tool Head (all types) .....	54-26021-1
Heavy Duty Tool Head .....	Not Required
Fiber Cutter Tool Head .....	54-26020-3

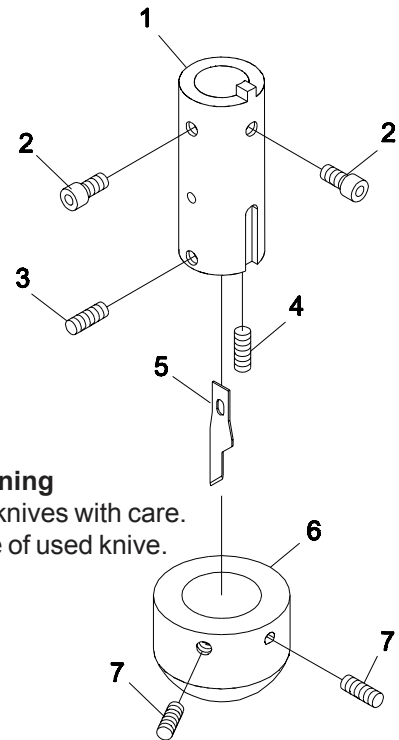
# Tool Options

## Extended X-Acto Drag Knife Assembly H9-30064-1 (#16 X-Acto)

ITEM	PART No.	DESCRIPTION	QTY
1	54-26111-3	X-Acto Knife Holder, Extended	1
2	335-93-6	Screw, Socket Hd. 8-32 x 3/8	2
3	347-93-5	Setscrew, Brass Tip #8-32 x 5/16	1
4	348-94-12	Setscrew, Special Oval Point, #8-36 x 3/4	1
5	67-12792	#16 X-Acto Drag Knife	1
6	54-26112	Drag Knife Foot (std)	1
	54-26112-1	Drag Knife Foot Carpet Style (optional)	1
	54-26112-W	Drag Knife Foot, Wide (optional)	1
7	347-93-5	Setscrew, Brass Tip#8-32 x 5/16	2

\* Adapters not Included

Required Adapters for use with each Tool Spindle:  
 Standard Tool Head (all types) ..... 54-26021-1  
 Heavy Duty Tool Head ..... Not Required  
 Fiber Cutter Tool Head ..... 54-26020-3



**Warning**  
 Always handle knives with care.  
 Safely dispose of used knife.

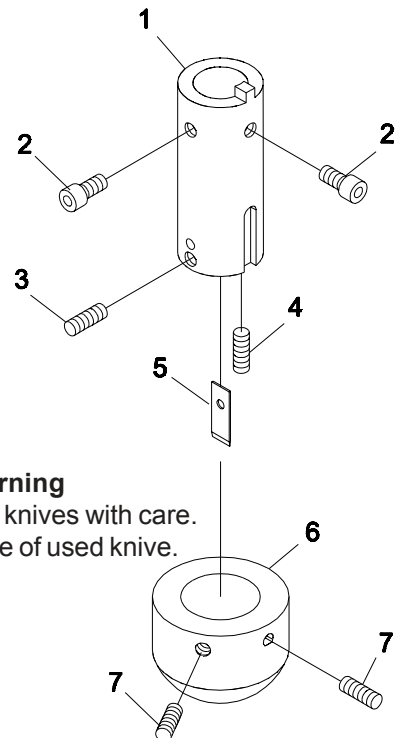
Blade Changing Station 68-26141 Optional

## Extended Slitter Knife Assembly H9-30055-1 (.04 thk)

ITEM	PART No.	DESCRIPTION	QTY
1	54-26111-1	Drag Knife Holder, Extended	1
2	335-93-6	Screw, Socket Hd. 8-32 x 3/8	2
3	347-93-5	Setscrew, Brass Tip #8-32 x 5/16	1
4	348-94-12	Setscrew, Special Oval Point, #8-36 x 3/4	1
5	54-26012	Slitter Knife, .04 Thick(Square)	1
6	54-26112	Drag Knife Foot (std)	1
	54-26112-1	Drag Knife Foot Carpet Style (optional)	1
	54-26112-W	Drag Knife Foot, Wide (optional)	1
7	347-93-5	Setscrew, Brass Tip#8-32 x 5/16	2

\* Adapters not Included

Required Adapters for use with each Tool Spindle:  
 Standard Tool Head (all types) ..... 54-26021-1  
 Heavy Duty Tool Head ..... Not Required  
 Fiber Cutter Tool Head ..... 54-26020-3



**Warning**  
 Always handle knives with care.  
 Safely dispose of used knife.

Blade Changing Station 68-26141 Optional

**Eastman®**

Over a Century of Cutting Expertise

# Tool Options

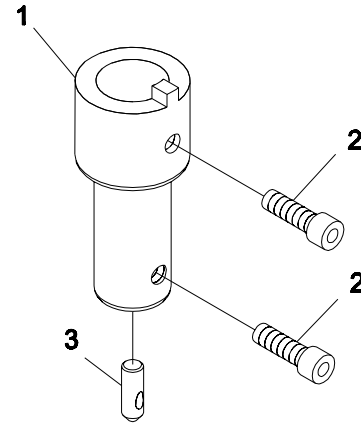
## Hole Punch Assembly

(See chart for assembly number)

ITEM	PART No.	DESCRIPTION	QTY
1	See Chart	Punch Holder	1
2	335-93-4	Screw, Socket Hd. 8-32 x 1/4	2
3	See Chart	Punch, Hole Cutting	1

\* Adapters not Included

*Blade Changing Station 68-26141 Optional*



Hole Size	Punch no.(3)	Punch Description	Punch Holder(1)	Assembly no.	Opt. Depth Limiter
1mm	67-26027-8	1mm Cut, 1/8" Punch Base	54-26013-15	H9-30028-1	
2mm	67-26027-9	2mm Cut, 3/16" Punch Base	54-26013-14	H9-30029-1	68-26341-6
2.5mm	67-26027-31	2.5mm Cut, 1/4" Punch Base	54-26013-16	H9-30105-1	
3mm	67-26027-10	3mm Cut, 1/4" Punch Base	54-26013-16	H9-30030-1	
4mm	67-26027-11	4mm Cut, 5/16" Punch Base	54-26013-10	H9-30031-1	
5mm	67-26027-12	5mm Cut, 5/16" Punch Base	54-26013-10	H9-30032-1	
6mm	67-26027-13	6mm Cut, 3/8" Punch Base	54-26013-11	H9-30033-1	
Pin Point	67-26027-23	Point Locator, 1/8" Punch Base	54-26013-15	H9-30089-1	
Pin Point	67-26027-24	Point Locator, 3/16" Punch Base	54-26013-14	H9-30090-1	68-26341-6
1/32"	67-26027-7	1/32" Cut, 1/8" Punch Base	54-26013-15	H9-30039-1	
1/16"	67-26027-6	1/16" Cut, 3/16" Punch Base	54-26013-14	H9-30040-1	68-26341-6
1/8"	67-26027-2	1/8" Cut, 5/16" Punch Base	54-26013-10	H9-30034-1	
3/16"	67-26027-3	3/16" Cut, 5/16" Punch Base	54-26013-10	H9-30035-1	
7/32"	67-26027-17	7/32" Cut, 3/8" Punch Base	54-26013-11	H9-30082-1	
1/4"	67-26027-1	1/4" Cut, 3/8" Punch Base	54-26013-11	H9-30037-1	
17/64"	67-26027-18	17/64" Cut, 7/16" Punch Base	54-26013-12	H9-30083-1	
9/32"	67-26027-14	9/32" Cut, 7/16" Punch Base	54-26013-12	H9-30042-1	
5/16"	67-26027-5	5/16" Cut, 7/16" Punch Base	54-26013-12	H9-30036-1	

Optional: To Order Long Taper Punches add "L" after the part number.  
To Order Perforating Punches add "P" after the part number.

### Punch Sizing Chart

1mm   2mm   3mm   4mm   5mm   6mm

1/32   1/16   1/8   3/16   7/32   1/4   17/64   9/32   5/16

11/32   3/8   13/32   7/16   1/2   9/16   21/32

Required Adapters for use with each Tool Spindle:

Standard Tool Head (all types) ..... 54-26021-1

Heavy Duty Tool Head ..... Not Required

Fiber Cutter Tool Head ..... 54-26020-3

# Tool Options

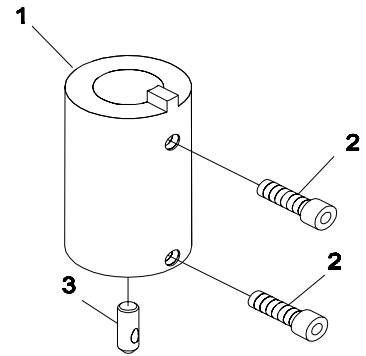
## Heavy Duty Hole Punch Assembly

(See chart for assembly number)

ITEM	PART No.	DESCRIPTION	QTY
1	See Chart	Punch Holder	1
2	335-93-4	Screw, Socket Hd. 8-32 x 1/4	2
3	See Chart	Punch, Hole Cutting	1

**\* Adapters not Included**

Required Adapters for use with each Tool Spindle:	
Standard Tool Head (all types) .....	54-26021-1
Heavy Duty Tool Head .....	Not Required
Fiber Cutter Tool Head .....	54-26020-3



**Blade Changing Station 68-26141 Optional**

Hole Size	Punch no.	Punch Description	Punch Holder	Assembly no
21/64"	67-26027-30	21/64" Cut, 1/2" Punch Base	54-26013-13	H9-30104-1
11/32"	67-26027-19	11/32" Cut, 1/2" Punch Base	54-26013-13	H9-30084-1
3/8"	67-26027-15	3/8" Cut, 1/2" Punch Base	54-26013-13	H9-30041-1
25/64"	67-26027-28	25/64" Cut, 1/2" Punch Base	54-26013-13	H9-30098-1
13/32"	67-26027-20	13/32" Cut, 9/16" Punch Base	54-26013-18	H9-30085-1
7/16"	67-26027-16	7/16" Cut, 9/16" Punch Base	54-26013-18	H9-30043-1
1/2"	67-26027-4	1/2" Cut, 5/8" Punch Base	54-26013-17	H9-30038-1
9/16"	67-26027-22	9/16" Cut, 11/16" Punch Base	54-26013-20	H9-30087-1
21/32"	67-26027-21	21/32" Cut, 3/4" Punch Base	54-26013-19	H9-30086-1
43/64"	67-26027-29	43/64" Cut, 3/4" Punch Base	54-26013-19	H9-30103-1
.695"	67-26027-26	.695" Cut, 13/16" Punch Base	54-26013-22	H9-30096-1
45/64"	67-26027-27	45/64" Cut, 13/16" Punch Base	54-26013-22	H9-30097-1
7/8"	67-26027-25	7/8" Cut, 1" Punch Base	54-26013-21	H9-30095-1

Optional: To Order Long Taper Punches add "L" after the part number.  
To Order Perforating Punches add "P" after the part number.

**Eastman®**

Over a Century of Cutting Expertise

# Tool Options

## Corner Punch Assembly .50" Radius Assembly H9-30081-1

ITEM	PART No.	DESCRIPTION	QTY
1	355-34-16	Shoulder Screw	1
2	54-26473	Tool Holder Corner Punch	1
3	335-93-6	Screw, Socket Hd 8-32 x 3/8	2
4	54-26474	Clamp, Corner Punch	1
5	511-3-3	Roll Pin, .093 x 1/8 dia	1
6	54-26476	Blade, Curved .5 Radius x .018 Thick	1
7	67-26341	Spring	1
8	54-26475	Plunger, Corner Punch	1

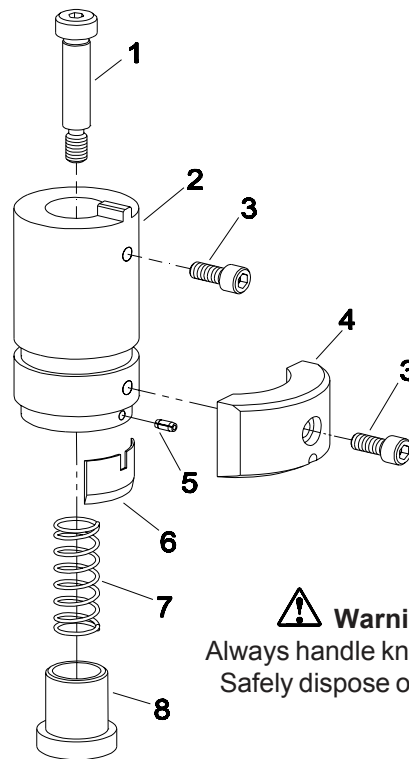
**\* Adapters not Included**

Required Adapters for use with each Tool Spindle:	
Standard Tool Head (all types) .....	54-26021-1
Heavy Duty Tool Head .....	Not Required
Fiber Cutter Tool Head .....	54-26020-3



**Caution**

Improper depth limiters may cause damage to the cutting surface.



**Warning**

Always handle knives with care.  
Safely dispose of used knife.

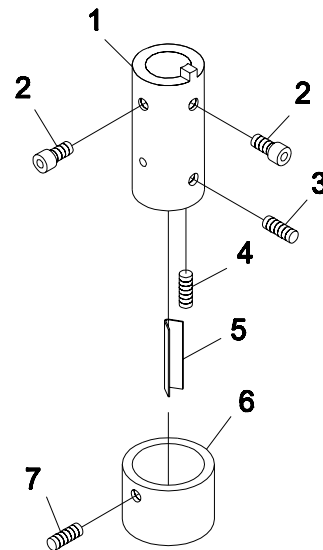
*Blade Changing Station 68-26141 Optional*

## "V" Notch Punch Assembly H9-30056-1

ITEM	PART No.	DESCRIPTION	QTY
1	54-26113-1	"V" Notch Holder, Extended	1
2	335-93-6	Screw, Socket Hd. 8-32 x 3/8	2
3	342-93-4	Setscrew, #8-32 x 1/4	1
4	348-94-12	Setscrew, Special Oval Point, #8-36 x 3/4	1
5	54-H2015	"V" Notch Punch, 60° v	1
6	54-26114	"V" Notch Foot	1
7	342-93-3	Setscrew, Special Oval Point, #8-32 x 3/16	1

**\* Adapters not Included**

Required Adapters for use with each Tool Spindle:	
Standard Tool Head (all types) .....	54-26021-1
Heavy Duty Tool Head .....	Not Required
Fiber Cutter Tool Head .....	54-26020-3



*Blade Changing Station 68-26141 Optional*



# Tool Options

## Adjustable Carpet Cutter Assembly .04 x 30° Assembly H9-30052-1C

ITEM	PART No.	DESCRIPTION	QTY
1	335-93-4	Screw, Socket Hd. #8-32 x 1/4	2
2	54-26111-1C	Tool Holder, Extended, Carpet Cutter	1
3	342-93-4S	Setscrew, #8-32 x 1/4	1
4	355-34-16SA	Shoulder Screw, Special	3
5	54-26011-7	Flat Drag Knife, .04 x 30°	1
	54-26011-13	Flat Drag Knife, .04 x 50°	1
6	54-26527	Press Foot Insert	1
7	335-93-6	Screw, Socket Hd. #8-32 x 3/8	1
8	54-26528	Adjustable Knurled Stop	1
9	345-93-3S	Setscrew, #8-32 x 1/4	2
10	67-26371	Spring, Compression	3
11	54-26529	Press Foot Release	1
12	91-26030	Vernier Decal	2

**\* Adapters not Included**

Optional Knife Material & Surface Treatments Available.

To order M2 steel knife material add "M2" after the part number.

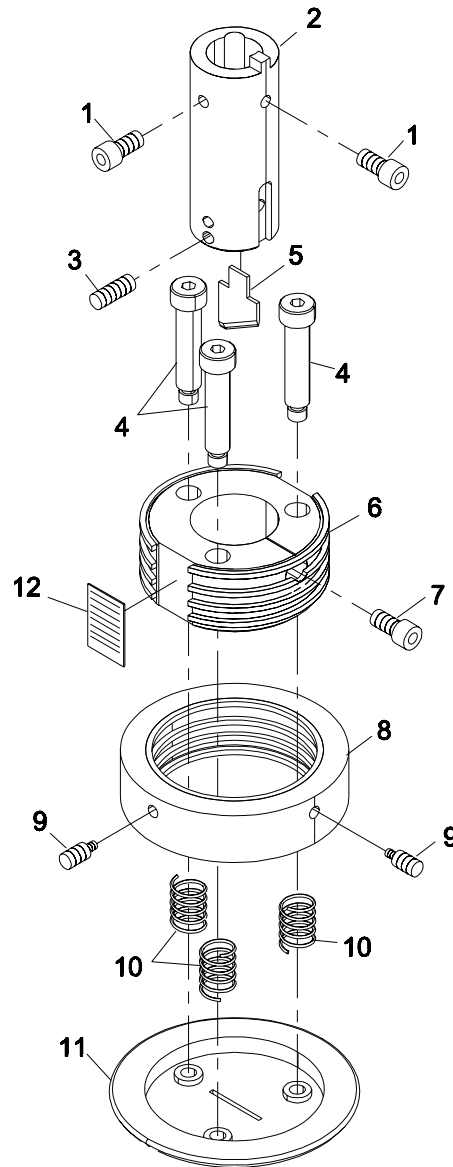
To order M2 steel knife material with -Z- Surface Treatment add "M2Z" after the part number.

Required Adapters for use with each Tool Spindle:  
 Standard Tool Head (all types) ..... 54-26021-1  
 Heavy Duty Tool Head ..... Not Required  
 Fiber Cutter Tool Head ..... 54-26020-3



**Caution**

Improper depth limiting may cause damage to the cutting surface.



**Warning**

Always handle knives with care.  
 Safely dispose of used knife.

**Blade Changing Station 68-26141 Optional**

**Eastman®**

*Over a Century of Cutting Expertise*

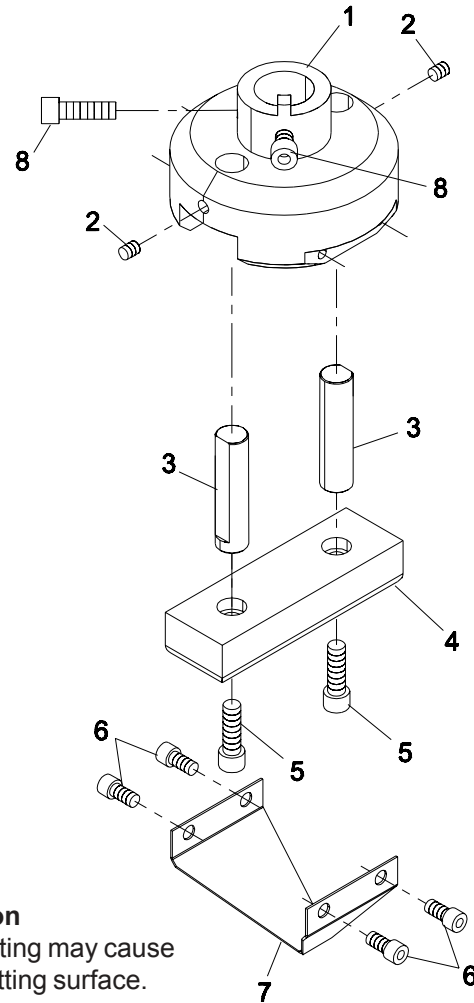
# Tool Options

## 80° V-Knife Cutter Assembly 68-26112

ITEM	PART No.	DESCRIPTION	QTY
1	54-26549	Tool Holder, V-Cutter	1
2	342-93-6	Setscrew, Hex #8-32 x 3/8	2
3	54-26548	Adjust Shaft, V-Cutter	2
4	54-26547	Slide Shoe, V-Cutter	1
5	335-93-8	Screw, Socket Hd. #8-32 x 1/2	2
6	335-86-6	Screw, Socket Hd. #6-32 x 3/8	4
7	54-26546	80° V-Knife	1
8	335-93-6	Screw, Socket Hd. #8-32 x 3/8	2

\* Adapters not Included

Required Adapters for use with each Tool Spindle:  
 Standard Tool Head (all types) ..... 54-26021-1  
 Heavy Duty Tool Head ..... Not Required  
 Fiber Cutter Tool Head ..... 54-26020-3



**⚠ Caution**  
 Improper depth limiting may cause damage to the cutting surface.

**⚠ Warning**  
 Always handle knives with care.  
 Safely dispose of used knife.

**Blade Changing Station 68-26141 Optional**

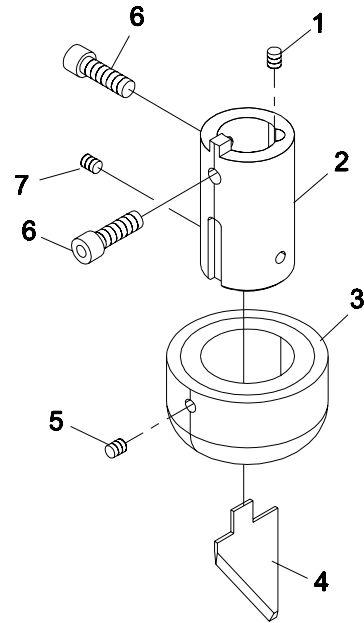
# Tool Options

## 1" Tall Drag Knife Assembly .04 x 55° Assembly H9-30088-1, H9-30088-1W

ITEM	PART No.	DESCRIPTION	QTY
1	348-94-12	Setscrew, Hex #8-32 x 3/4	1
2	54-26111-4	Tool Holder, 1" Tall Drag Knife	1
3	54-26112-3	1" Drag Foot	1
	54-26112-3w	1" Drag Foot, Wide Base	1
4	54-26011-9	Drag Knife, .04 thk x 55 deg	1
5	342-93-8	Setscrew, Hex #8-32 x 1/2	1
6	335-93-6	Screw, Socket Hd. #8-32 x 3/8	2
7	342-93-8	Setscrew, Hex #8-32 x 1/2	1

\* Adapters not Included

Required Adapters for use with each Tool Spindle:  
 Standard Tool Head (all types) ..... 54-26021-1  
 Heavy Duty Tool Head ..... Not Required  
 Fiber Cutter Tool Head ..... 54-26020-3



**⚠ Caution**  
 Improper depth limiting may cause damage to the cutting surface.

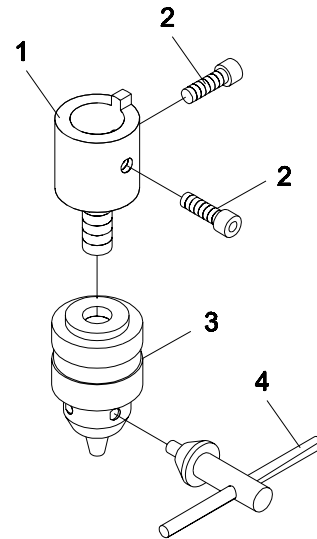
# Tool Options

## Drill Tool Assembly 1/64 - 5/32 Drill Dia. H9-30091-1

ITEM	PART No.	DESCRIPTION	QTY
1	54-26791	Drill Chuck Holder	1
2	335-93-6	Screw, Socket Hd. #8-32 x 3/8	2
3	229C1-5	Drill Chuck, (1/64 - 5/32)	1
4	142C1-21	Key, Drill Chuck	1

\* Adapters not Included

Required Adapters for use with each Tool Spindle:  
 Standard Tool Head (all types) ..... 54-26021-1  
 Heavy Duty Tool Head ..... Not Required  
 Fiber Cutter Tool Head ..... 54-26020-3



**⚠ Caution**  
 Improper depth limiting may cause damage to the cutting surface.

Blade Changing Station 68-26141 Optional

**Eastman®**  
 Over a Century of Cutting Expertise

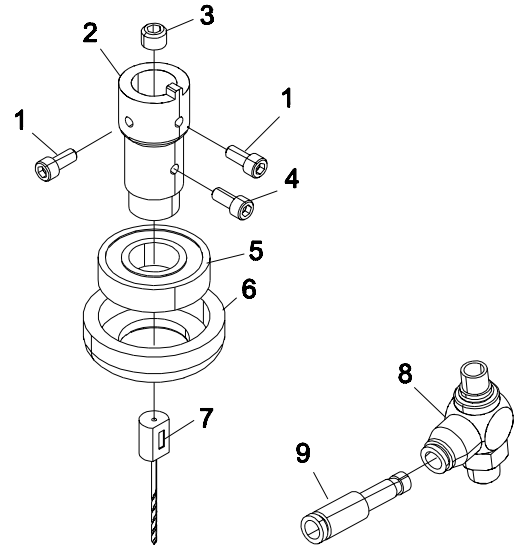
# Tool Options

## Depth Limiting Drill Tool Assembly

1/16 Drill Dia. x 3/4 Deep

H9-30102-1

ITEM	PART No.	DESCRIPTION	QTY
1	54-26791	Drill Chuck Holder	1
2	335-93-6	Screw, Socket Hd. #8-32 x 3/8	2
3	342-36-4	Setscrew, Hex 5/16-32 x 1/4	1
4	335-93-6	Screw, Socket Hd. #8-32 x 3/8	1
5	9020-0202	Rotate Bearing	1
6	54-27548	Depth Limit Foot	1
7	54-27549-1	Drill Bit, 1/16 Dia.	1
8	100-18-37	Speed Control Valve	1
9	100-12-1	Reducer, 5/32 to 1/4	1



**\* Adapters not Included**

Required Adapters for use with each Tool Spindle:  
 Standard Tool Head (all types) ..... 54-26021-1  
 Heavy Duty Tool Head ..... Not Required  
 Fiber Cutter Tool Head ..... 54-26020-3

**Blade Changing Station 68-26141 Optional**

**⚠ Caution**

Improper depth limiting may cause damage to the cutting surface.

# Tool Options

## Fly Cutter Assembly

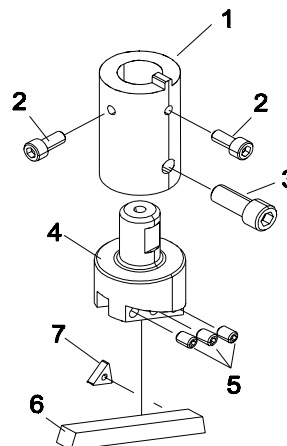
### 2-1/2" Wide Path

### H9-30100-1

ITEM	PART No.	DESCRIPTION	QTY
1	54-26013-23	Fly Cut Holder	11
2	335-93-6	Screw, Socket Hd. #8-32 x 3/8	2
3	335-35-10	Screw, Socket Hd. 1/4-28 x 5/8	1
4	54-27184	Fly Cut Tool Holder	1
5	342-86-4	Setscrew, Hex #6-32 x 1/4	3
6	54-27185	Tool Mount, Fly Cutter	2
7	67-26582	Tri-Edge Blade	1

\* Adapters not Included

Required Adapters for use with each Tool Spindle:  
 Standard Tool Head (all types)..... 54-26021-1  
 Heavy Duty Tool Head ..... Not Required  
 Fiber Cutter Tool Head ..... 54-26020-3



*Blade Changing Station 68-26141 Optional*



#### Caution

Improper depth limiting may cause damage to the cutting surface.

**Eastman®**

*Over a Century of Cutting Expertise*

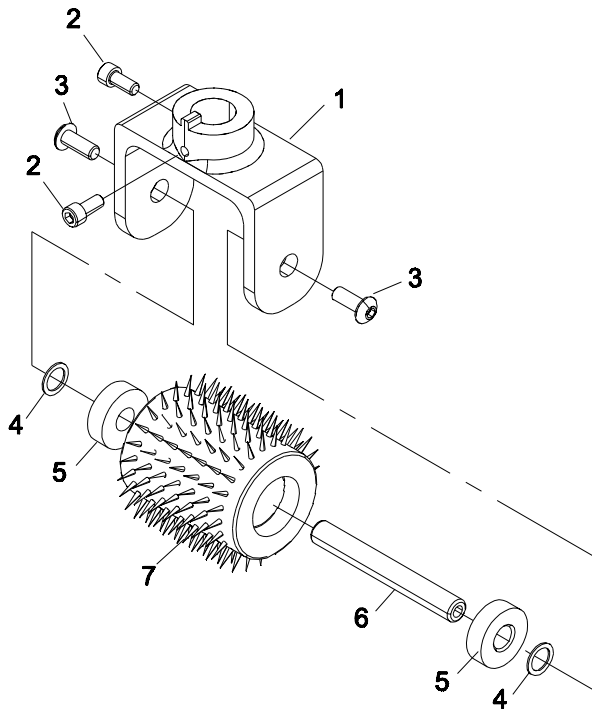
# Tool Options

## Pin Perforating Assembly 2" Wide x 1/4" Sq. Pattern H9-30101-1

ITEM	PART No.	DESCRIPTION	QTY
1	54-27235	Tool Holder, Pin Perf	1
2	335-93-6	Screw, Socket Hd. #8-32 x 3/8	2
3	333-102-8	Screw, Button Hd. #10-32 x 1/2	2
4	CH-83	Washer, Thin	2
5	-	Bearing	2
6	54-27252	Axial	1
7	54-27236	Pin Perf Tool, 2" x 1/4"sq	1

\* Adapters not Included

Required Adapters for use with each Tool Spindle:  
 Standard Tool Head (all types) ..... 54-26021-1  
 Heavy Duty Tool Head ..... Not Required  
 Fiber Cutter Tool Head ..... 54-26020-3



**Caution**  
 Improper depth limiting may cause  
 damage to the cutting surface.

*Blade Changing Station 68-26141 Optional*

# Tool Options

## 45° Angle Plunge Assembly

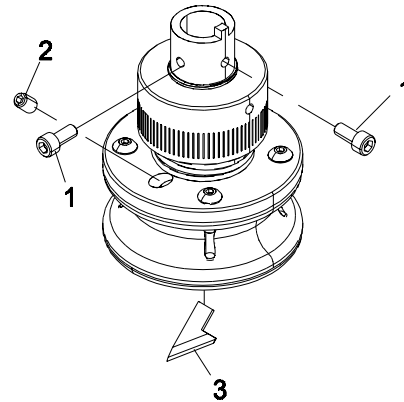
5/16" Max. Material

H9-30099-1

ITEM	PART No.	DESCRIPTION	QTY
1	335-93-6	Screw, Socket Hd. #8-32 x 3/8	2
2	342-102-5	Setscrew, Hex #10-32 x 5/16	1
3	54-26011-11	Drag Knife, .040 thk x 45°	1
	54-26011-12	Drag Knife, .040 thk x 45°SB( std)	1
	54-26011-14	Drag Knife, .020 thk x 45°SB	1

**\* Adapters not Included**

Required Adapters for use with each Tool Spindle:	
Standard Tool Head (all types) .....	54-26021-1
Heavy Duty Tool Head .....	Not Required
Fiber Cutter Tool Head .....	54-26020-3



**⚠ Caution**

Improper depth limiting may cause damage to the cutting surface.

**Blade Changing Station 68-26141 Optional**

**Eastman®**

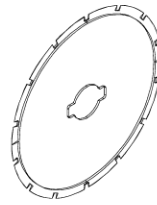
*Over a Century of Cutting Expertise*

# Perforating Round Blades

Consult Factory for Availability

- 1" (28mm)
- 2" (45mm)
- 2.36" (60mm)
- 3" (75mm)

**"New"**



ITEM	PART No.	DESCRIPTION	QTY
1	67-26583-4-03	28MM(1.0") Perf Blade 4/IN, .03	1
	67-26584-4-03	45MM(2.0") Perf Blade 4/IN, .03	1

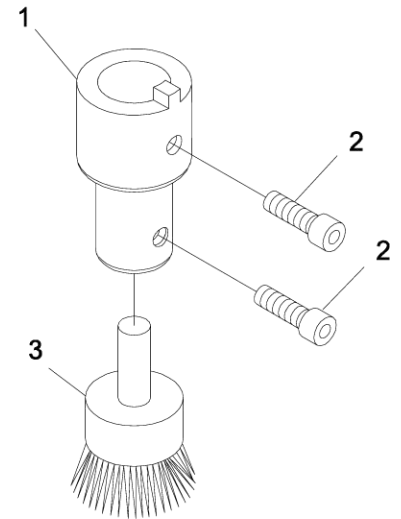
ref: 4 cuts per inch, .03" no cut

## Tool Options

Wire Brush Buffing Assembly  
H9-30092-1

ITEM	PART No.	DESCRIPTION	QTY
1	54-26013-7	Buff Holder, 1/4" Base	1
2	335-93-6	Screw, Socket Hd. 8-32 x 3/8	2
3	67-26512-1	Buffing Tool, 1/2" Path, .014 Wire	1
	67-26512-2	Buffing Tool, 3/4" Path, .014 Wire	1
	67-26512-3	Buffing Tool, 1" Path, .014 Wire (std)	1

**"New"**



\* Adapters not included

*Blade Changing Station 68-26141 Optional*

**Limited Warranty.** Eastman warrants to the buyer that the equipment shall be free from defects in materials or workmanship for a period of 180 days commencing on the date of invoice. Any goods or parts claimed by the buyer to be defective must be returned to Eastman, freight charges prepaid, within the 180-day warranty period. If Eastman determines that the goods or parts are defective in materials or workmanship, Eastman's sole obligation under this warranty shall be, at Eastman's sole option, to repair or replace the defective goods or parts or to provide the buyer a credit equal to the portion of the purchase price allocable to the defective goods or parts. This warranty shall not apply if defects are caused by product misuse or neglect, if the machine has been altered or modified by the buyer, or if other than genuine Eastman belts, emery wheels, knives or parts are used in the machine. THIS WARRANTY IS THE ONLY WARRANTY APPLICABLE TO THIS PURCHASE. SELLER DISCLAIMS ALL OTHER WARRANTIES, EXPRESS OR IMPLIED, INCLUDING, BUT NOT LIMITED TO, THE IMPLIED WARRANTIES OF MERCHANTABILITY AND FITNESS FOR A PARTICULAR PURPOSE.

**Limitation of Liability.** Eastman's liability to the buyer, and the buyer's remedies from Eastman, whether in contract, negligence, tort, under any warranty or otherwise, shall be limited to the remedies provided in the foregoing Limited Warranty. In no event shall Eastman have any responsibility or liability to the buyer for (a) any special, indirect, incidental, or consequential damages, including, but not limited to, loss of use, revenue, or profit, even if Eastman has been advised of the possibility of such damages, or (b) any claim against the buyer by any third party. The price stated for the product sold is a consideration for limiting Eastman's liability.