

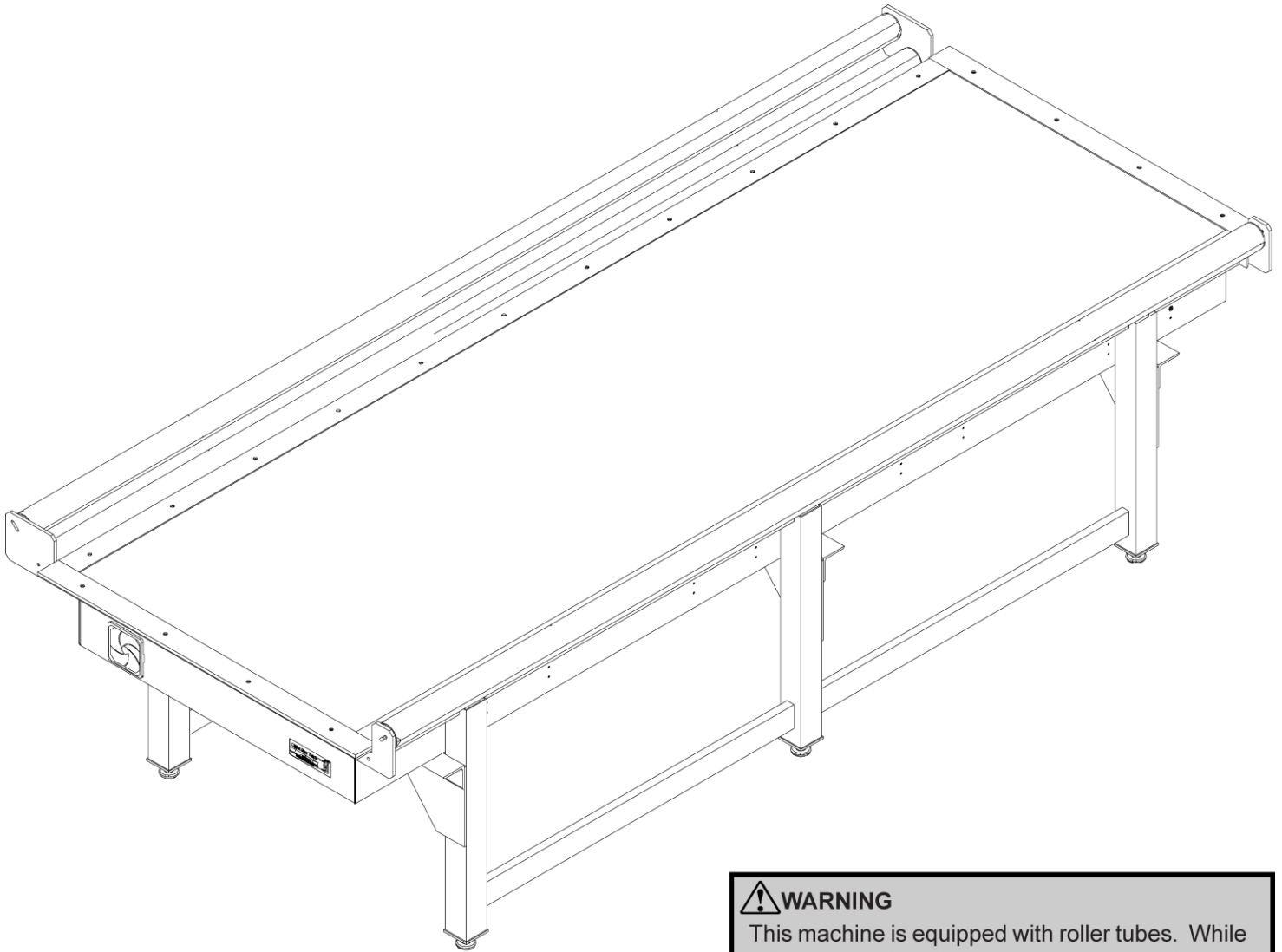
Eastman®

---

**THE EASTMAN®**  
**Light Box Inspection Table**

**Model: 68-26242-MS**

**Service Manual**



**⚠ WARNING**

This machine is equipped with roller tubes. While advancing material keep hands, arms, and hair away from the roller tube area at all times.

Misuse of this machine or failure to follow all safety instructions on this machine and in the instruction manual may result in serious personal injuries.

---

**Eastman®**

*Over a Century of Cutting Expertise*

## Table of Contents

General Safety Precautions .....	3
Safety Information .....	3
Reference Manuals .....	4
Recommended Spare Parts List .....	4
Installation .....	4
Table Preparation .....	4
To Level Table .....	4
Electrical Connection .....	4
Operation .....	4
Bulb Replacement .....	4
Light Box Inspection Table Familiarization .....	5
Light Box Table .....	6
Light Box Rollers .....	8
Light Box Enclosure .....	9
Light Box Electrical Diagram .....	10
Blue Print No. (31-9000-32) .....	10
Notes .....	11
Technical Data .....	12

### IMPORTANT

The purchaser must instruct all operators on the proper use of this equipment. All standard industrial safety measures and equipment should be provided to protect the operator. Operators must be cautioned that improper or careless use of this equipment may cause personal injury. If you do not have qualified operators to instruct new persons, contact your EASTMAN sales representative or EASTMAN factory direct.

Electrical connections and servicing to this equipment should be made by a qualified electrician who is familiar with applicable codes and regulations. Disconnect this equipment from electrical power source before proceeding with any disassembly for adjustment or repair.

Your Eastman **Light Box Inspection Table** is designed to operate with the M9000 Cutting system. Material may advance at a high rate speed. All personnel should be instructed to wear safety glasses and stand well clear of the **Light Box Inspection Table** when in operation.

---

## Safety Information

Throughout this manual, safety information is presented by the use of the terms WARNING, CAUTION, ELECTRICAL HAZARD, and NOTE. These terms have the following meanings:

### **WARNING**

A warning contains critical information regarding potential safety hazards that can occur during proper use or misuse of the machine. Failure to follow these procedures may result in serious personal injury to the user.

### **CAUTION**

A caution contains instructions for the use or maintenance of the machine. Failure to follow these procedures may result in damage to the machine.

### **ELECTRICAL HAZARD**

An electrical hazard calls attention to a procedure, practice, or the like, which, if not correctly performed or adhered to, could result in personal injury. Do not proceed beyond an Electrical Hazard.

Supplementary information may be given in a Note.

## General Safety Precautions

### **WARNING**

- This machine is equipped with roller tubes. While advancing material keep hands, arms, and hair away from the roller tube area at all times. Safety gloves, glasses, and appropriate clothing may prevent serious personal injuries.
- Disconnect the power supply to the machine when it is not in use or during routine maintenance, including cleaning and lubrication.
- The purchaser must instruct all operators in the proper use of the machine according to the instructions in this manual. This training must include instruction on the potential safety hazards arising from the use or misuse of the machine. In addition to such training, the purchaser should provide written work instructions as necessary to ensure correct use of the machine for specific cutting and spreading applications.
- Do not modify this machine or disable safety features. Unauthorized modification may result in serious personal injuries to the user. Electrical connections to this machine must be made by a qualified electrician familiar with applicable codes and regulations.
- Safety labels must be kept clean and legible at all times. Call the Eastman Machine factory to order replacement labels.

## Safety and Indemnification

During the life of the machine, the purchaser agrees to provide to all machine users (including its own employees and independent contractors) all relevant safety information, including warning labels and instruction manuals. The purchaser also agrees to maintain the safety features and working condition of the machine, and to adequately train all users in the safe use and maintenance of the machine. The purchaser agrees to defend, protect, indemnify, and hold Eastman Machine Company and its subsidiaries harmless from and against all claims, losses, expenses, damages, and liabilities to the extent that they have been caused by the purchaser's failure to comply with the terms and instructions of this manual.

---

**Eastman®**

*Over a Century of Cutting Expertise*

The Eastman **Light Box Inspection Table** has been inspected and tested at the factory prior to shipment. The Light Box Table may be shipped partially disassembled and require some assembly and setup before operation can take place. Refer to this service manual as an installation guide during installation. To get the best performance, familiarize yourself and all operators with all functions and adjustments of this equipment. Before any operation takes place it is important to carefully read and follow the instructions in this reference manual.

The Illustrated Parts List is a comprehensive list of the components used in the machine. When ordering replacement parts, please include machine name, machine voltage and serial number. Some machine configuration may require additional components not shown, please consult factory for part numbers.

The following list of recommended spare parts may be included with your machine or purchased at a later date.

## Reference Manuals

E-534 ..... Light Box Table Service Manual

## Recommended Spare Parts List

<u>Part Number</u>	<u>Description</u>
11-1302	Fuse, 5 amp.
31-26260-1	Lamp, 36" T8
31-26261	Ballast, 110 volt

## Installation

The Light Box Inspection Table weighs approx. 450 lbs. (204 kg.) uncrated for a 126" machine.



### CAUTION

Do not place forklift arms under light box enclosure. When lifting, place forklift arms under table leg cross tubes. Use care not to damage table legs and leg levelers.

## Table Preparation

Place light box table approx. 12" [30.5 cm] from desired end of table and even with the operators side of the existing table. The table must be square and level along its entire length. A minimum 3 feet (1M) clearance along each side of the table is required for safe operation. Refer to familiarization section before placing machine in the final location.

## To Level Table

Use carpenter's level to check table. Adjust table feet as necessary to level table.

## Electrical Connection

Connect power cord plug to table inlet at back under side of the table. Check voltage rating with electrical rating stamped on serial number plate. If compatible, connect cord to main power.

Note: Voltage varying more than 10% (11v for 110 volt machine, 22v for 220 volt machine) may damage your system's electronics.

## Operation

The Light Box Inspection Table is designed to aid the operator in detecting material flaws by emitting light through material to show material flaws.

The light switch is located at the table front. Press the light switch ON to turn on the light box and OFF to turn off the light box.

## Bulb Replacement



### CAUTION

Disconnect power before proceeding with bulb replacement.

Only Eastman bulbs should be used when replacing bulbs. Damage to your machine may result and will void your warrantee.

- 1) Disconnect main power.
- 2) Remove (4) screws holding the side dress plate.
- 3) Slide table surface out to gain access to the bulbs.

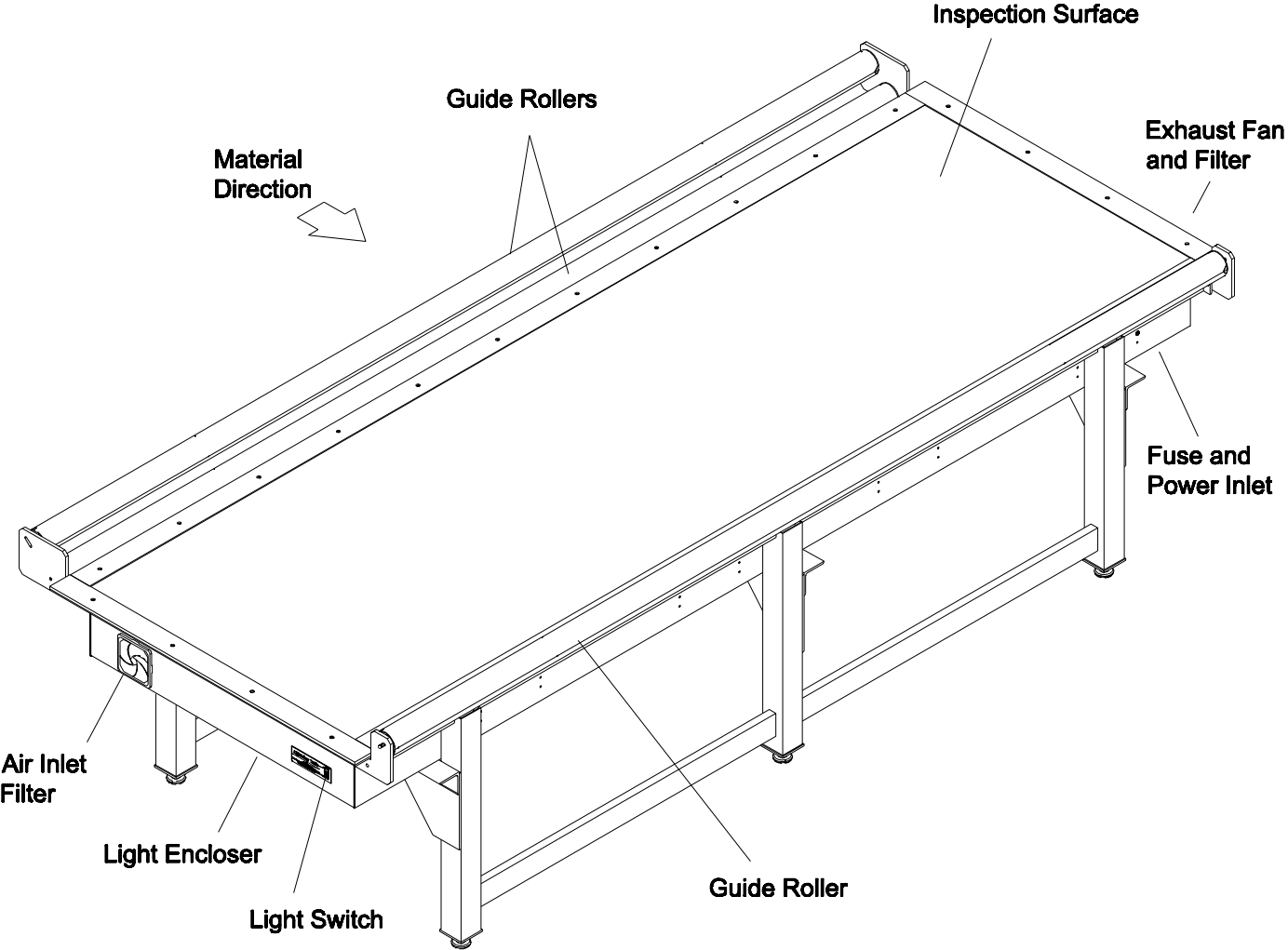
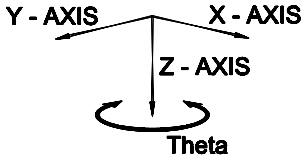


Always allow bulbs to cool before replacing.

- 4) Replace bulbs as required. It is always recommended to replace all the bulbs at the same time to ensure even light disbursement.
- 5) Replace table surface and side dress plate.

It is the owners responsibility to properly dispose of used bulbs according to the codes and regulations in your town.

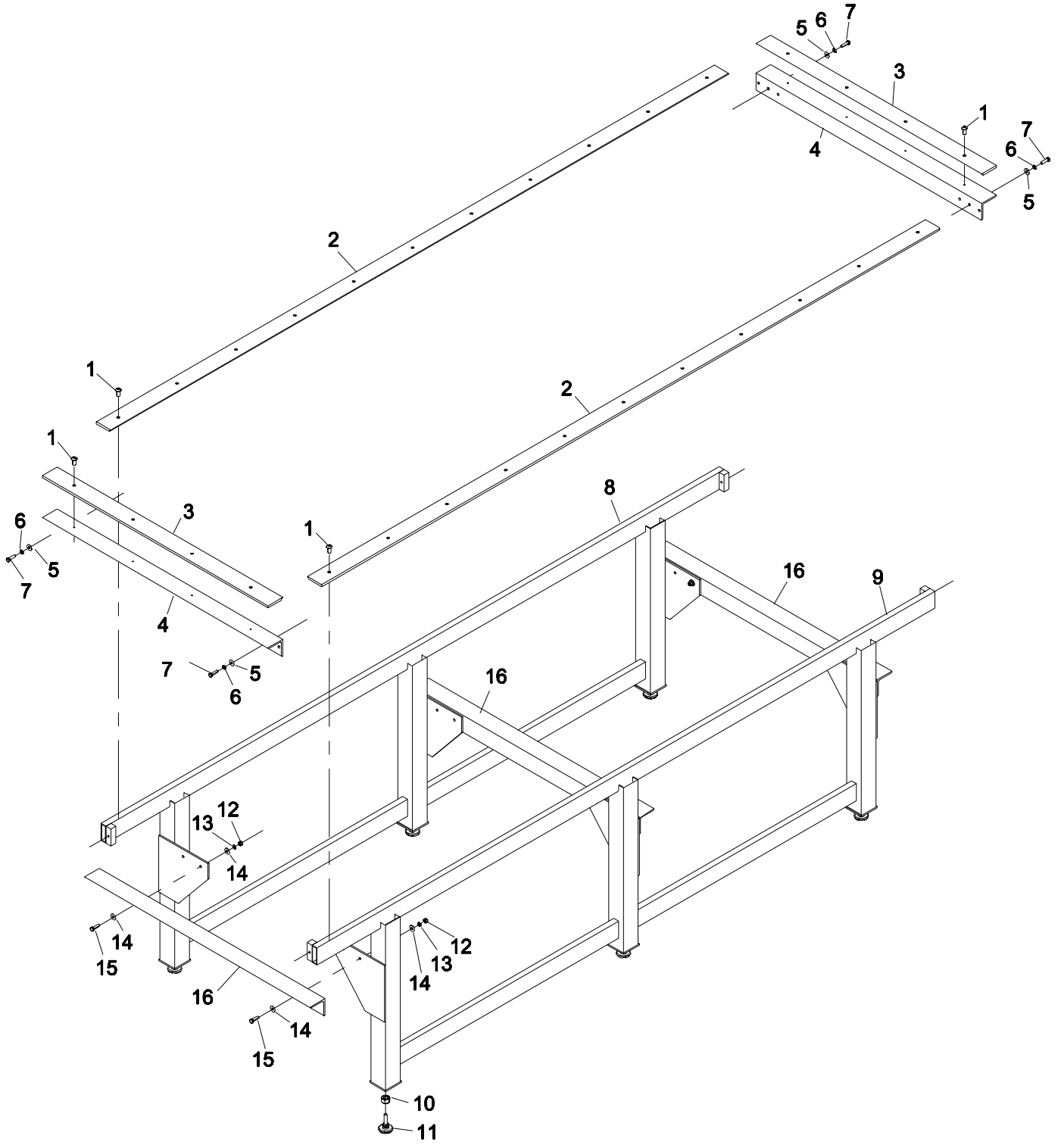
# Light Box Inspection Table Familiarization



## Light Box Table

ITEM	PART NO.	DESCRIPTION	QTY.
1	333-34-8	Screw, Button Hd. 1/4-20 x 1/2	30
2	54-27058-MS	Dress Plate, Edge	2
3	54-27057	Dress Plate, Side	2
4	54-27062	Top Angle, Light Box	2
5	410-38	Washer, Flat 3/8	4
6	402-38	Washer, Lock 3/8	4
7	331-38-20	Screw, Hex Hd. 3/8-16 x 1-1/4	4
8	54-27065-MS	End Leg, Left, Light Box	1
9	54-27064-MS	End Leg, Right, Light Box	1
10	204-43	Nut, Hex 1/2-13	9
11	67-26237	Leg Leveler	9
12	203-38	Nut, Hex 3/8-16	12
13	402-38	Washer, Lock 3/8	12
14	410-38	Washer, Flat 3/8	24
15	335-38-20	Screw, Socket Hd. 3/8-16 x 1-1/4	12
16	54-27063	Bottom Angle, Light Box	3

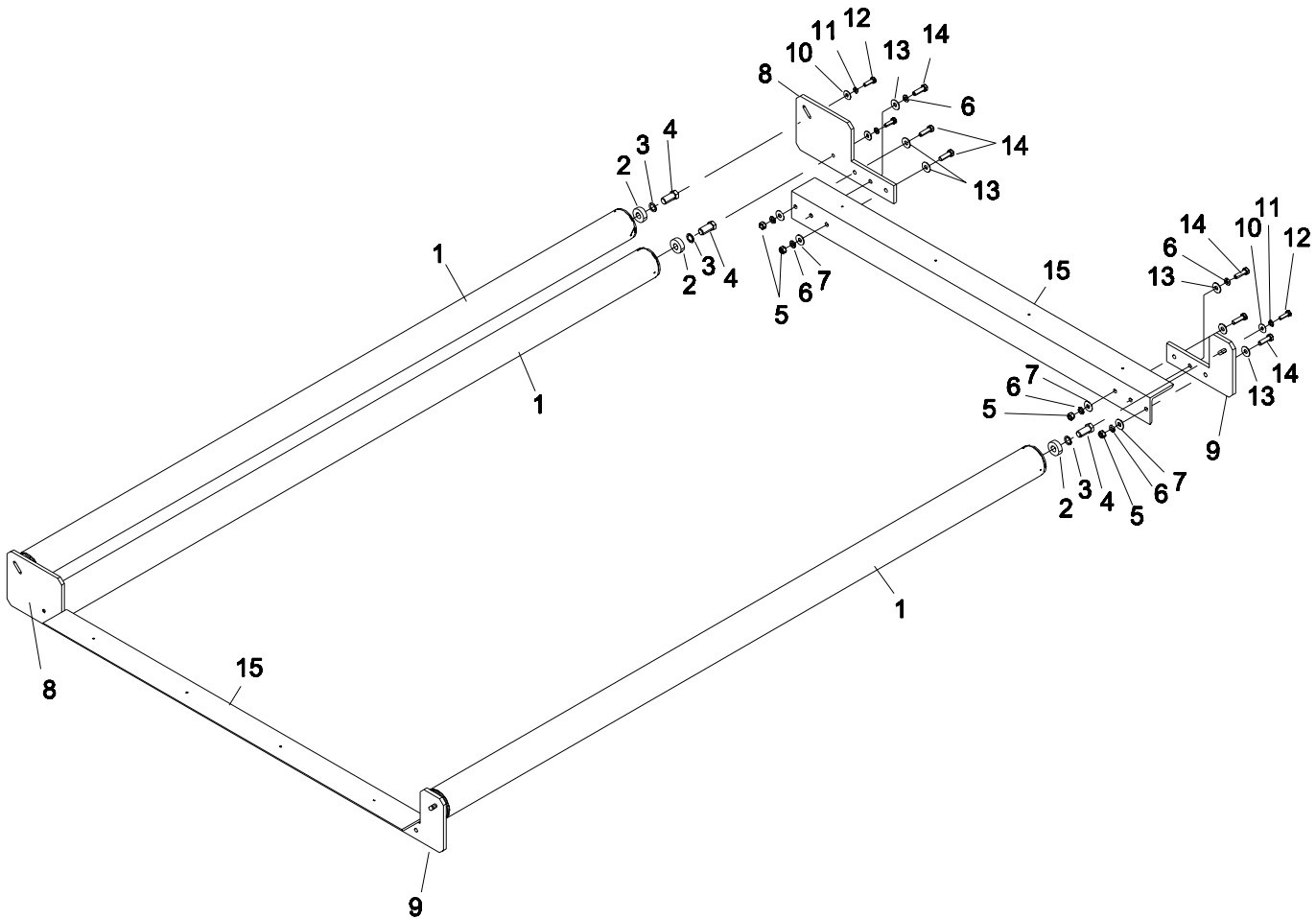
MS-Machine Size



# Eastman®

---

## Light Box Rollers

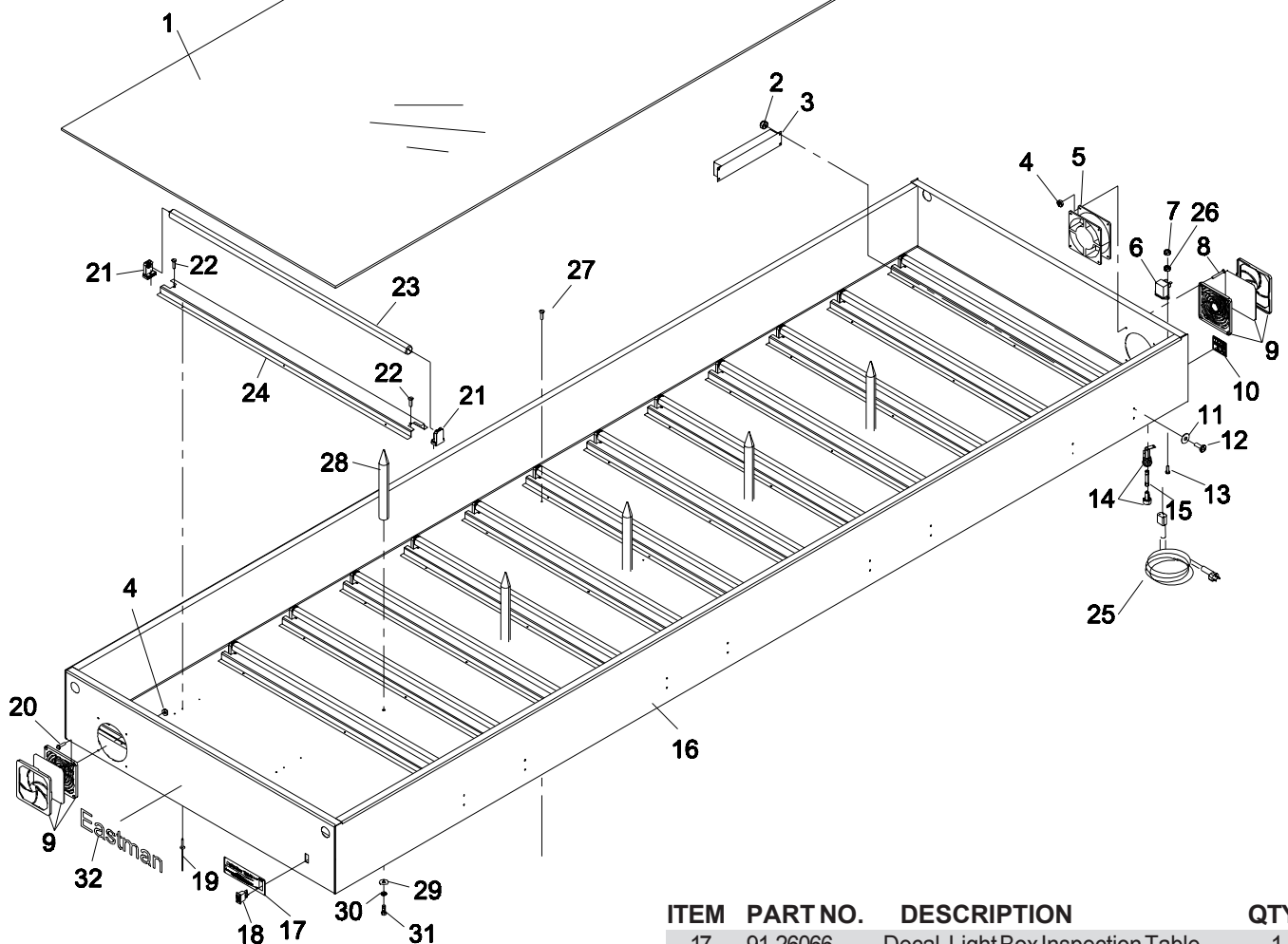


ITEM	PART NO.	DESCRIPTION	QTY.
1	68-26243-MS	Roller Assembly, Light Box Table	3
2	9020-0207	Roller Bearing, Light Box Table	6
3	411-48-2	Fiber Washer, 5/8" id x 1/16 thk	6
4	SY-10232	Roller Stud	6
5	203-38	Nut, Hex 3/8-16	8
6	402-38	Washer, Lock 3/8	12
7	410-38	Washer, Flat 3/8	8
8	54-27060	Roller Bracket, Double, Light Box Table	2
9	54-27059	Roller Bracket, Single, Light Box Table	2
10	410-36	Washer, Flat 5/16	6
11	402-36	Washer, Lock 5/16	6
12	331-36-16	Screw, Hex Hd. 5/16-18 x 1	6
13	410-38	Washer, Flat 3/8	12
14	331-38-20	Screw, Hex Hd. 3/8-16 x 1-1/4	12
15	54-27062	Top Angle, Light Box	2

MS-Machine Size



# Light Box Enclosure



ITEM	PART NO.	DESCRIPTION	QTY.
1	67-26554-MS	Inspection Surface	1
2	211-102	Nut, Elastic Stop #10-32	16
3	31-26261	Ballast, T8	4
4	203-86	Screw, Hex #6-32	8
5	11-1908	Fan, Air Cooling	1
6	253C1-1	Power Inlet, 110v	1
7	203-81	Nut, Hex #4-40	2
8	311-86-18	Screw, Flat Hd. #6-32 x 1-1/8	4
9	11-1958	Air Filter/Guard	2
10	91-26067	Decal, Voltage/Amp	1
11	410-010	Washer, Flat #10	16
12	311-102-8	Screw, Round Hd. #10-32 x 1/2	16
13	311-81-12	Screw, Flat Hd. #4-40 x 3/4	2
14	31-00741	Fuse Holder	1
15	11-1302	Fuse, 5 Amp.	1
16	54-27056-MS	Enclosure, Light Box	1

ITEM	PART NO.	DESCRIPTION	QTY.
17	91-26066	Decal, Light Box Inspection Table	1
18	580C1-213	Switch, Light	1
19	546-4-8	Rivet, 1/8	84
20	311-86-8	Screw, Flat Hd. #6-32 x 1/2	4
21	11-1282	Lamp Holder	28
22	361-8-6	Screw, Self Tap #8 x 3/8	28
23	31-26260-1	Lamp, 36" T8	A/R
24	54-27066	Lamp Mounting Rail	A/R
25	145C1-9	Power Cord, 110v	1
26	402-040	Washer, Lock #4	2
27	373-93-8	Screw, Self Tap, #8 x 1/2	9
28	54-27120	Support Rod, Clear	5
29	410-36	Washer, Flat 5/16	5
30	402-36	Washer, Lock 5/16	5
31	331-36-10	Screw, Hex Head 5/16-18 x 5/8	5
32	91-26003	Decal, Eastman	2

MS-Machine Size  
A/R-As Required

**Eastman®**

Over a Century of Cutting Expertise



---

**Notes**

---

**Eastman®**

*Over a Century of Cutting Expertise*

---

**Technical Data**

**EASTMAN® Light Box Inspection Table**

**Light Box Inspection Table**

Table Height .....	33 in. (832 mm.)
Table Length .....	46 in. (1168 mm.)
Table Width .....	See Chart
Table Weight (126" Table) .....	450 lbs. (204kg.)
Operating Voltage .....	110v; 60hz
Power Requirement .....	110V/5A
Min. Start Temp. ....	0 F, -17 (C)
Lamp .....	36 in. T8
Kelvin Range .....	4100

Machine Size	Working Width	Overall Machine Width
126" (3200 mm)	126" (3200 mm)	132" (3352 mm)

Please allow 3 ft working clearance on all sides.  
 \* For all other sizes consult factory.

**Limited Warranty.** Eastman warrants to the buyer that the equipment shall be free from defects in materials or workmanship for a period of 180 days commencing on the date of invoice. Any goods or parts claimed by the buyer to be defective must be returned to Eastman, freight charges prepaid, within the 180-day warranty period. If Eastman determines that the goods or parts are defective in materials or workmanship, Eastman's sole obligation under this warranty shall be, at Eastman's sole option, to repair or replace the defective goods or parts or to provide the buyer a credit equal to the portion of the purchase price allocable to the defective goods or parts. This warranty shall not apply if defects are caused by product misuse or neglect, if the machine has been altered or modified by the buyer, or if other than genuine Eastman belts, emery wheels, knives or parts are used in the machine. THIS WARRANTY IS THE ONLY WARRANTY APPLICABLE TO THIS PURCHASE. SELLER DISCLAIMS ALL OTHER WARRANTIES, EXPRESS OR IMPLIED, INCLUDING, BUT NOT LIMITED TO, THE IMPLIED WARRANTIES OF MERCHANTABILITY AND FITNESS FOR A PARTICULAR PURPOSE.

**Limitation of Liability.** Eastman's liability to the buyer, and the buyer's remedies from Eastman, whether in contract, negligence, tort, under any warranty or otherwise, shall be limited to the remedies provided in the foregoing Limited Warranty. In no event shall Eastman have any responsibility or liability to the buyer for (a) any special, indirect, incidental, or consequential damages, including, but not limited to, loss of use, revenue, or profit, even if Eastman has been advised of the possibility of such damages, or (b) any claim against the buyer by any third party. The price stated for the product sold is a consideration for limiting Eastman's liability.