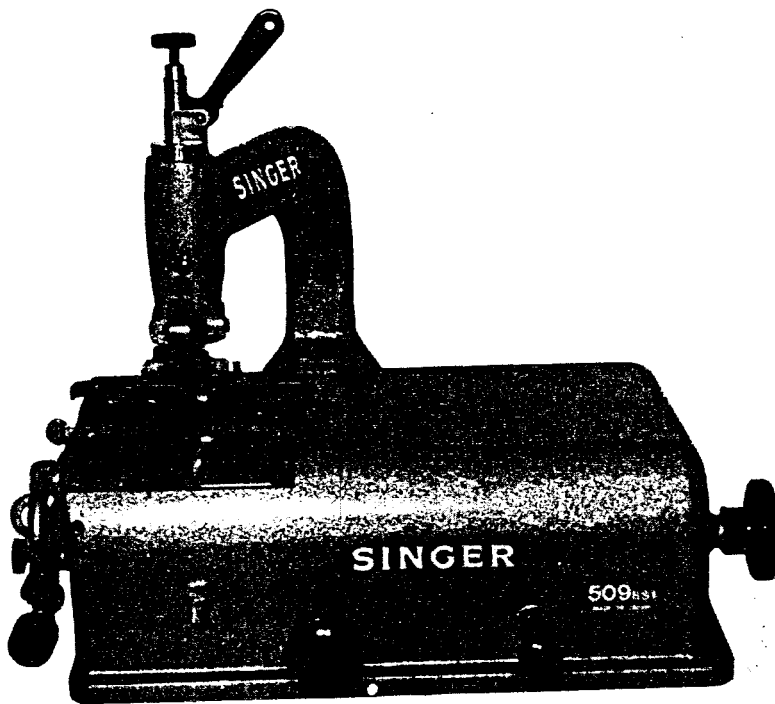


# SINGER\*

PARTS LIST

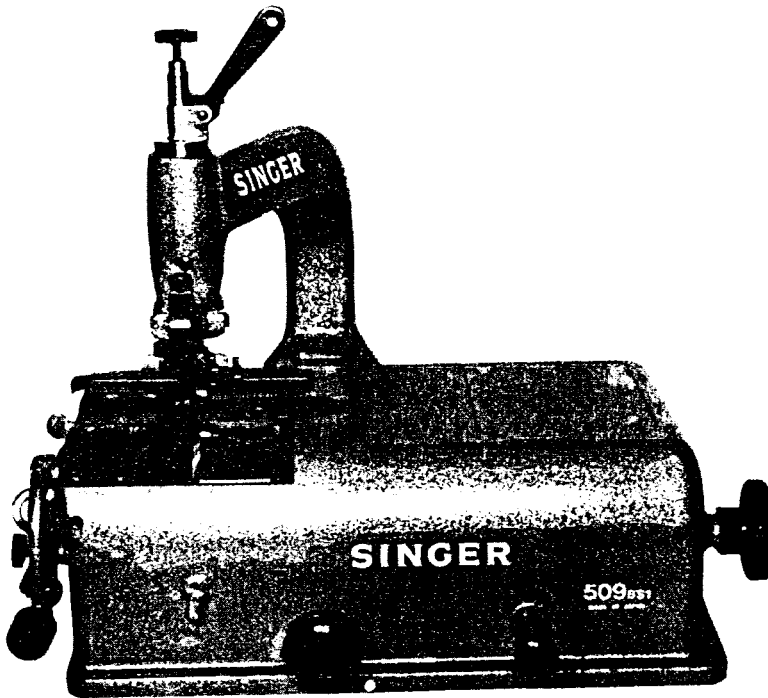
MODEL 509BS1



170C, 500?????

# INDEX

	PAGE
ACCESSORIES .....	10
PRESSER FEET .....	2
KNIFE & ITS BELT .....	4
BELTS FOR GRINDER, GRINDER .....	6
V BELT FOR KNIFE, FEED BARREL .....	8



509BS1

Fig. No.	Parts No.	Quantity	Name
1	0133	1	Presser bar regulating screw
2	0076	1	Presser bar regulating screw small thread
3	0138	1	Nut for $\approx$ 0076
4	6306	2	Set screw for $\approx$ 0129
5	0129	1	Presser bar lifter base
6	0131	1	Pin for $\approx$ 0129
7	0130	1	Presser bar lifter lever
8	0132	1	Presser bar lifter guide
9	0106	1	Presser foot taper pin set plate
10	0108	1	Screw for $\approx$ 0106
11	0107	1	Screw for $\approx$ 0106
12	0105	1	Presser foot supporting pin
13	0126-1	1	Presser bar screw
14	0126-2	1	Presser bar
15	0127	1	Presser bar spring
16	0128	1	Presser bar guide screw
17	0102	1	Presser foot flat spring
18	0103	1	Presser foot flat spring set screw
19	0101	2	Presser bar slide plate
20	8060	4	Screw for $\approx$ 0101
21	8089	2	Screw for $\approx$ 0101
22	0151	1	Presser foot A
23	0152	1	Presser foot B
24	0153	1	Presser foot C
25	0154	1	Presser foot D
26	7047	1	Set screw for $\approx$ 0112
27	0113	1	Washer for $\approx$ 0112
28	0112	1	Cover plate
29	0109	1	Guide for skiving width
30	0110	1	Guide screw for $\approx$ 0109
31	0111	1	Washer for $\approx$ 0110
32	8040	2	Set screw for $\approx$ 0100
33	0100	1	Feed barrel cover plate (upper)
34	6031	2	Set screw for $\approx$ 0098 (A)
35	0098	1	Feed barrel cover plate (lower)
36	8016	2	Set screw for $\approx$ 0098 (B)
37	0135	1	Feed barrel cover plate (small, lower)
38	6031	2	Set screw for $\approx$ 0135

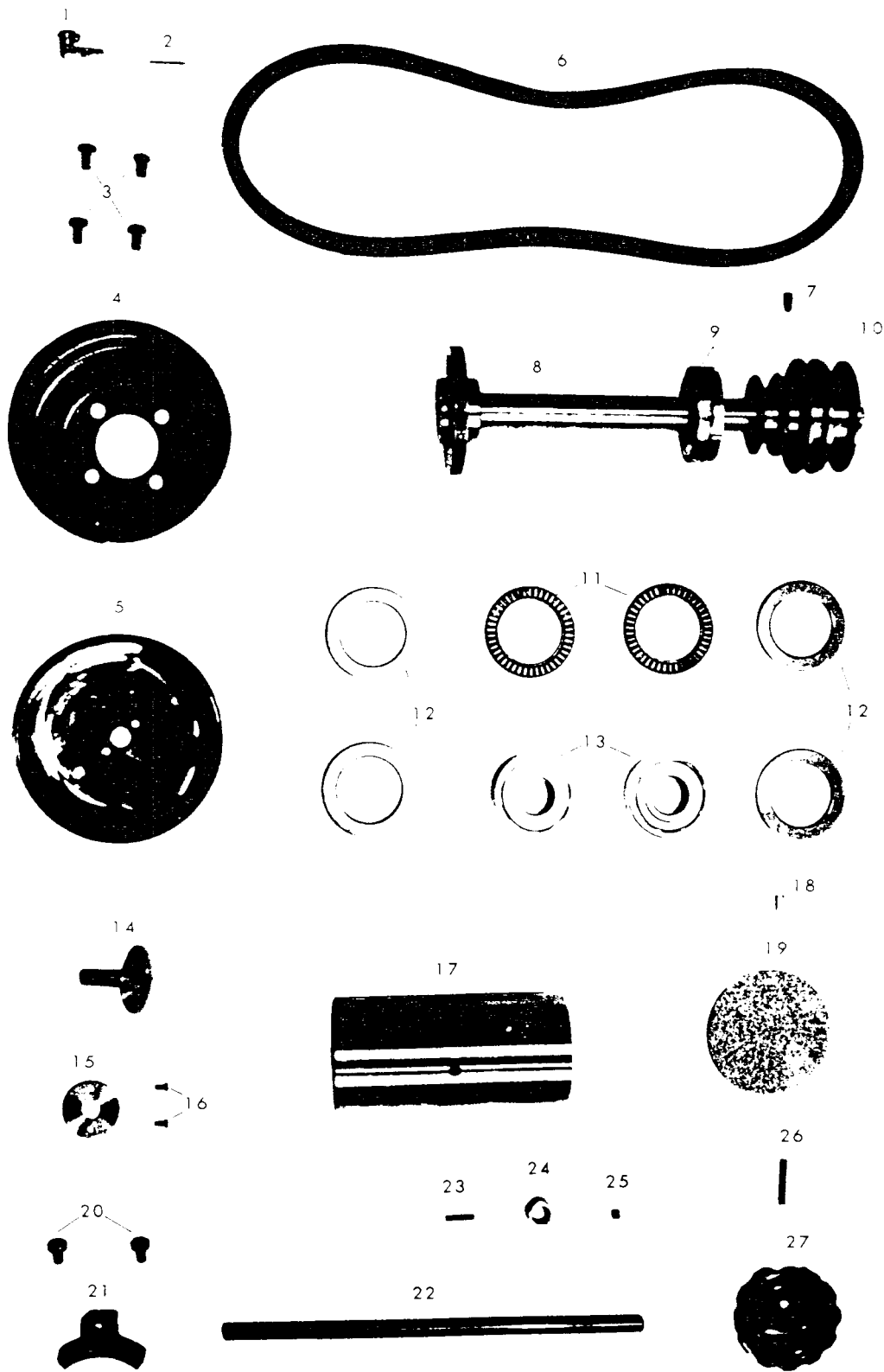
NOTE! WHEN ORDERING PARTS PREFIX ALL NUMBERS BY CS, EXAMPLE CS\_\_\_\_\_



NOTE! WHEN ORDERING PARTS PREFIX ALL NUMBERS BY CS, EXAMPLE CS\_\_\_

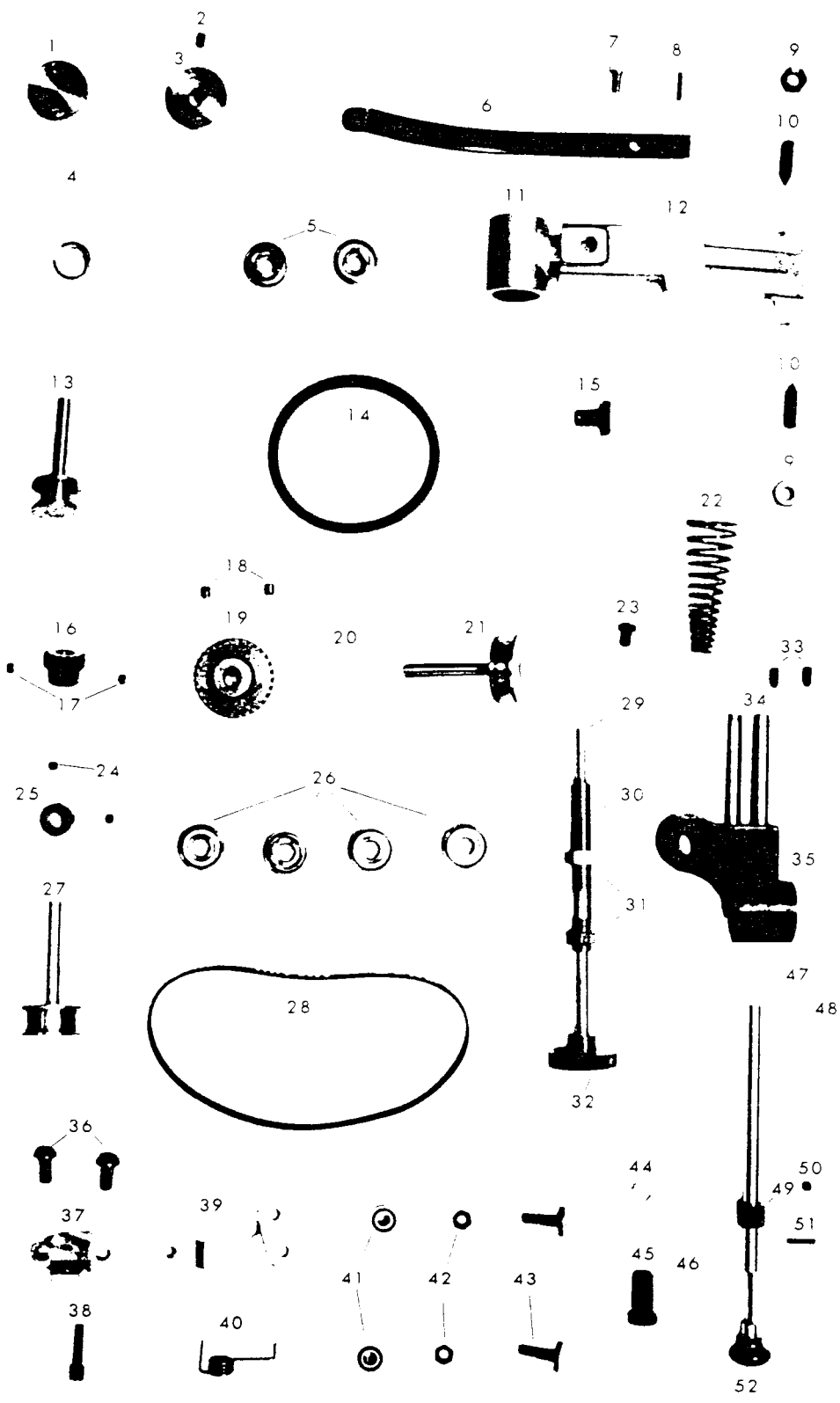
Fig. No.	Parts No.	Quantity	Name
1	0122	1	Oil cup (L shape)
2	0148	1	Oil wick for $\approx$ 0122
3	0011	4	Knife set screw
4	0003	1	Knife
5	0019	1	Brass duster pan
6	0124	1	Main shaft belt
7	8007	1	Knife shaft pulley set screw
8	0004	1	Knife shaft
9	0008	2	Thrust bearing collar
10	0009	1	Knife shaft pulley
11	0007-1	2	Thrust bearing for knife shaft (inside)
12	0007-2	4	Thrust bearing for knife shaft (outside)
13	0006	2	Ball bearing for $\approx$ 0004
14	0020	1	Brass duster pan set screw
15	0021	1	Collar for $\approx$ 0020
16	8044	2	Set screw for $\approx$ 0021
17	0005	1	Cylinder for $\approx$ 0004
18	8040	1	Set screw for $\approx$ 0162
19	0162	1	Round plate (small)
20	0011	2	Set screw for $\approx$ 0010
21	0010	1	Nut for knife shifting shaft
22	0012	1	Knife shifting shaft
23	0015	1	Spring pin for $\approx$ 0013
24	0013	1	Collar for $\approx$ 0012
25	8097	1	Collar set screw
26	0041	1	Locking pin for $\approx$ 0014
27	0014	1	Knob for knife shifting shaft

NOTE! WHEN ORDERING PARTS PREFIX ALL NUMBERS BY CS, EXAMPLE CS\_\_\_\_



NOTE! WHEN ORDERING PARTS PREFIX ALL NUMBERS BY CS, EXAMPLE CS\_\_\_

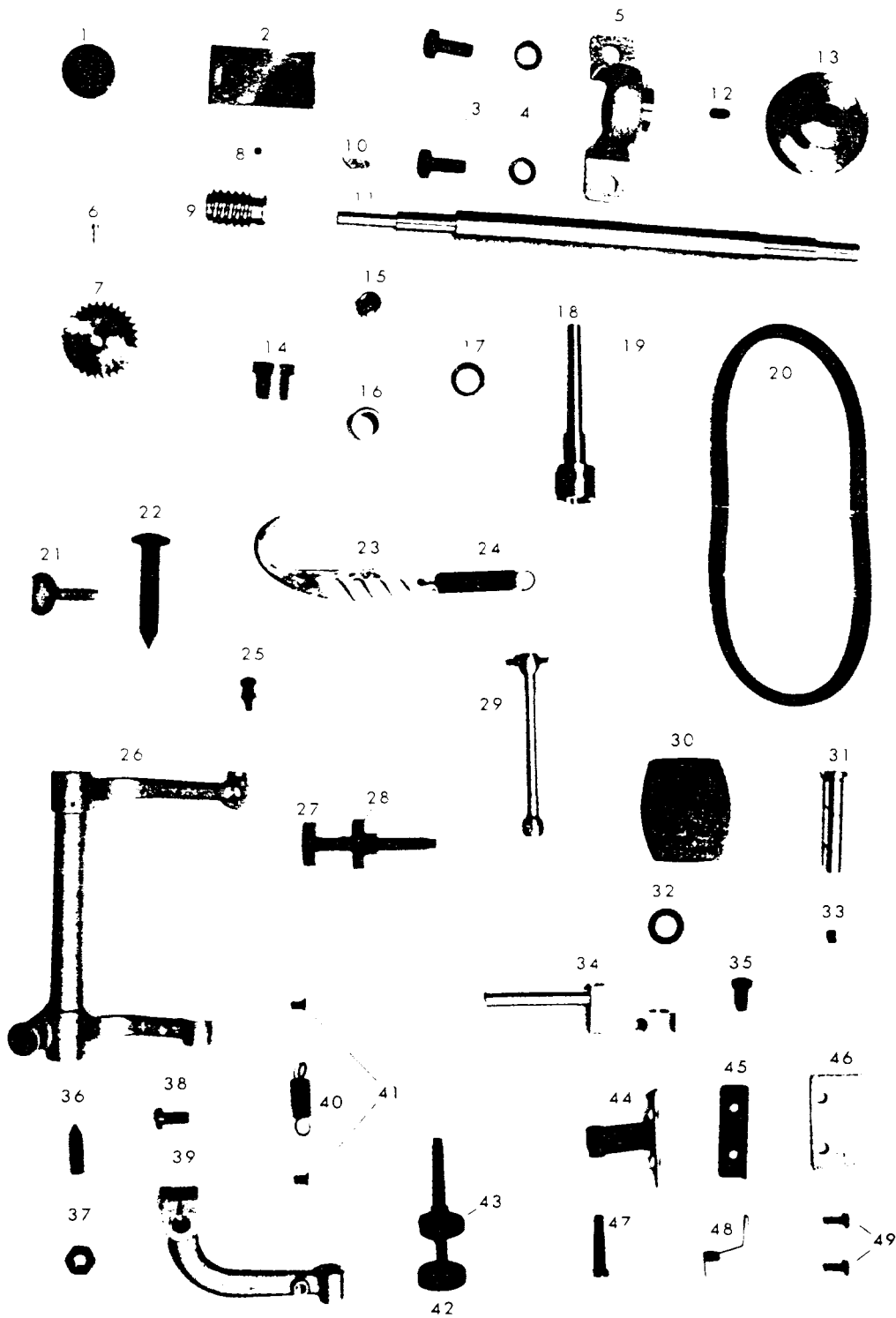
Fig. No.	Parts No.	Quantity	Name
1	0045	1	Grinder set screw
2	8009	1	Set screw for $\approx$ 0044
3	0044	1	Grinder base
4	0043	1	Grinder
5	0025	2	Ball bearing for grinder arm
6	0046	1	Flat spring for $\approx$ 0043
7	0047	1	Set screw $\approx$ 0046
8	0015	1	Pin for $\approx$ 0046
9	0040	2	Nut for $\approx$ 0038
10	0038	2	Pointed screw for $\approx$ 0037-2
11	0037-1	1	Grinder head
12	0037-2	1	Grinder arm
13	0042	1	Grinder shaft pulley
14	0036	1	V belt for grinder
15	0038	1	Set screw for $\approx$ 0037-1
16	0033	1	Small spiral gear
17	10767	2	Set screw for $\approx$ 0033
18	10766	2	Set screw for $\approx$ 0031
19	0031	1	Large spiral gear
20	10644	1	Washer for $\approx$ 0031
21	0027	1	Pulley for $\approx$ 0031
22	0023	1	Spring for $\approx$ 0022
23	0011	1	Spring set screw for $\approx$ 0023
24	8097	2	Small spiral gear collar set screw
25	0035	1	Small spiral gear pulley collar
26	0025	4	Spiral gear bearing
27	0034	1	Small spiral gear pulley
28	0053	1	Flat belt for grinder
29	0050	1	Grinder arm presser bar
30	0048	1	Grinder arm screw
31	0049	2	Nut for $\approx$ 0048
32	0051	1	Knob for $\approx$ 0050
33	8007	2	Set screw for $\approx$ 0024
34	0024	2	Supporting pin for $\approx$ 0022
35	0022	1	Spiral gear base
36	0141	2	Set screw for $\approx$ 0116
37	0116	1	Tension pulley base
38	0117	1	Pin for $\approx$ 0116
39	0120	1	Tension pulley base
40	0121	1	Tension pulley spring
41	0119	2	Tension pulley bearing
42	50058	2	Nut for $\approx$ 0118
43	0118	2	Screw for $\approx$ 0119
44	0145	1	Felt for $\approx$ 0059
45	0125	1	Stopper for $\approx$ 0059
46	8060	1	Set screw for $\approx$ 0125
47	0059	1	Spiral gear base presser bar
48	8060	1	Set screw for $\approx$ 0059
49	0026	1	Collar for $\approx$ 0059
50	8097	1	Set screw for $\approx$ 0026
51	0015	1	Locking pin for $\approx$ 0026
52	0029	1	Knob for $\approx$ 0059



NOTE! WHEN ORDERING PARTS PREFIX ALL NUMBERS BY CS, EXAMPLE CS \_\_\_\_\_



Fig. No.	Parts No.	Quantity	Name
1	0142	1	Big screw for gear case
2	0070	1	Cover for gear case
3	0057	2	Screw for pillow block.
4	0058	2	Washer for pillow block.
5	0056	1	Pillow block
6	8060	1	Worm wheel set screw
7	0063	1	Worm wheel
8	8103	1	Worm set screw
9	0061	1	Worm
10	0030	1	Key pin for $\approx$ 0055
11	0055	1	Long shaft
12	8007	2	Long shaft pulley set screw
13	0054	1	Long shaft pulley
14	0065	1	Worm wheel collar
15	0069	1	Needle bearing for $\approx$ 0067 outside
16	0068	1	Needle bearing for $\approx$ 0067 inside
17	0071	1	Seal for shaft $\approx$ 0067
18	0067	1	Shaft for large gear
19	0030	1	Key pin for $\approx$ 0067
20	0016	1	V belt for $\approx$ 0055 for knife
21	0161	1	Center pin set screw
22	0084	1	Center pin
23	0081	1	Feed barrel regulating hook
24	0082	1	Spring for $\approx$ 0081
25	0080	1	Screw for $\approx$ 0081
26	0073	1	Feed barrel attachment casting body
27	0079	1	Feed regulating screw large thread
28	0139	1	Feed regulating nut
29	0072	1	Feed connecting rod
30	0086	1	Feed barrel
31	0088	1	Feed barrel spindle
32	0089	1	Feed barrel washer
33	8009	1	Grease sealing screw for $\approx$ 0088
34	0090	1	Feed barrel base
35	0091	1	Feed barrel base set screw
36	0039	1	Pointed screw for $\approx$ 0073
37	0040	1	Pointed screw nut for $\approx$ 0073
38	0075	1	Screw for feed barrel regulating body
39	0074	1	Feed barrel regulating body
40	0077	1	Spring for $\approx$ 0074
41	4139	2	Spring set screw
42	0076	1	Feed regulating screw (small thread)
43	0138	1	Nut for $\approx$ 0076
44	0095	1	Dusting leather set base
45	0094	1	Set plate for $\approx$ 0096
46	0096	1	Dusting leather for $\approx$ 0086
47	0092	1	Screw for $\approx$ 0095
48	0093	1	Spring for $\approx$ 0095
49	8089	2	Set screw for $\approx$ 0095



NOTE! WHEN ORDERING PARTS PREFIX ALL NUMBERS BY CS, EXAMPLE CS \_\_\_\_\_