

Eastman®

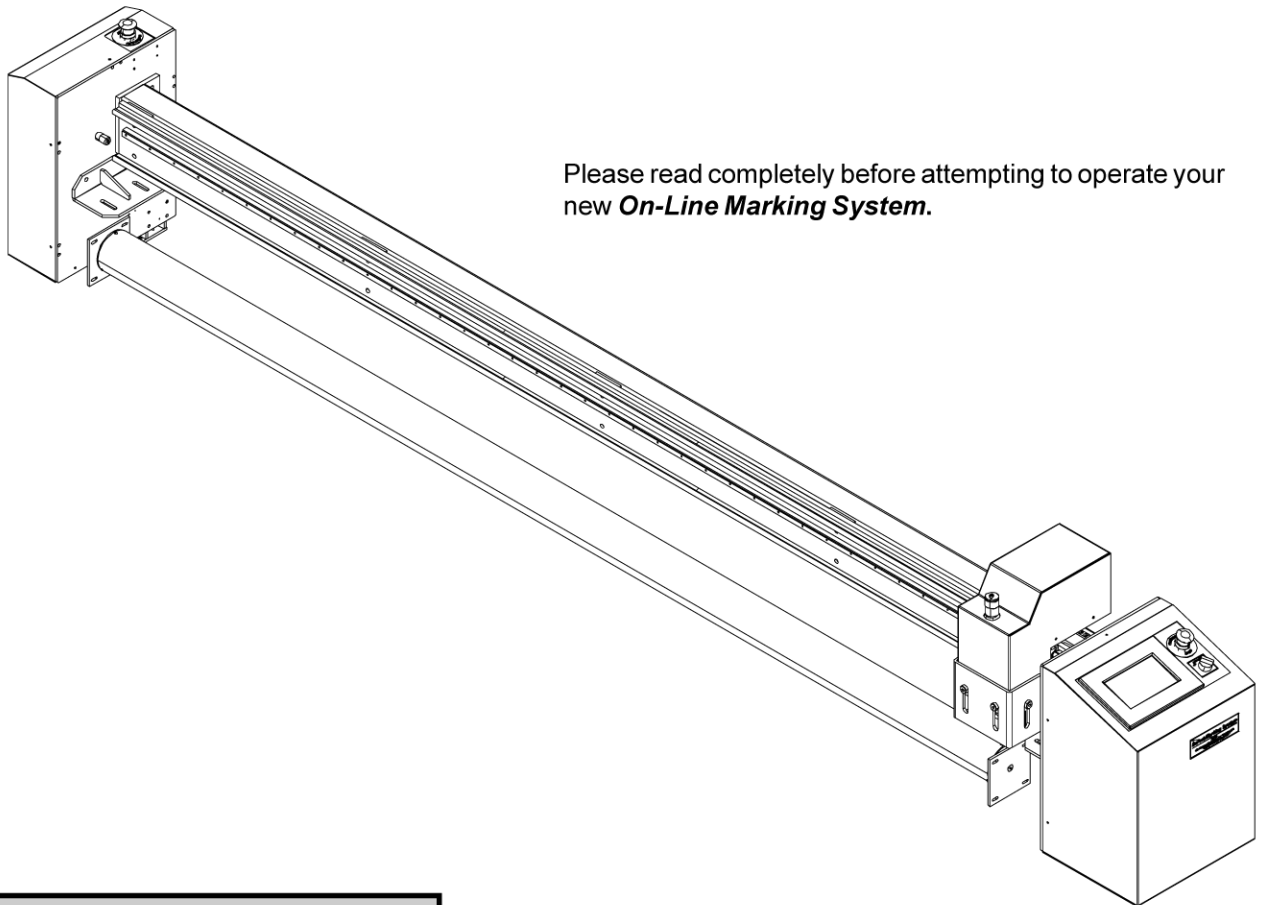
THE EASTMAN®

On-Line Marking System

Patent Pending

Service Manual

68-26186



Please read completely before attempting to operate your new **On-Line Marking System**.

⚠ WARNING

This machine is equipped with a very sharp Marking Tool. Keep hands, arms, and hair away from the knife area at all times.

Misuse of this machine or failure to follow all safety instructions on this machine and in the instruction manual may result in serious personal injuries.

Eastman®

Over a Century of Cutting Expertise

Table of Contents

General Safety Precautions	3	FAMILIARIZATION	8
Safety Information	3	On-Line Marking System	8
INSTALLATION	4	Pictorial Index On-Line Marking System	9
On-Line Marking System Installation	4	Operators Side Frame Assembly	10
Data, Power & Pneumatic Connection	4	Non-Operators Side Frame Assembly	12
OPERATION	4	Main Tube Assembly	14
Automatic Operation	4	Roller Tube Assembly	15
Manual Operation	4	Y-Car Assembly	16
Main Mode (Menu Selection)	5	Tool Head Assembly	18
Manual Mode (Menu Selection)	5	Flaw Marking Tool Assembly	19
Manual Mode Home Motor Menu (Menu Selection) .	5	Lockout/Tagout Filter Assembly	19
Parameters Mode (Menu Selection)	5	Optional: Front Display Panel Side Frame Assembly	20
Calibration Mode (Menu Selection)	6	Electrical Diagram Blue Print No. (31-9000-24)	22
OPERATING ADJUSTMENTS	6	Pneumatic Diagram Blue Print No. (91-26050)	23
Stroke Depth	6	TECHNICAL DATA	24
Flaw Marking Blade Depth	6		
MAINTENANCE	6		
Changing the Marking Tool	6		
Lubrication	6		

IMPORTANT

The purchaser must instruct all operators on the proper use of this equipment. All standard industrial safety measures and equipment should be provided to protect the operator. Operators must be cautioned that improper or careless use of this equipment may cause personal injury. If you do not have qualified operators to instruct new persons, contact your EASTMAN sales representative or EASTMAN factory direct.

Electrical connections and servicing to this equipment should be made by a qualified electrician who is familiar with applicable codes and regulations. Disconnect this equipment from electrical power source before proceeding with any disassembly for adjustment or repair.

Your Eastman **On-Line Marking System** is designed to operate at a high rate speed. All personnel should be instructed to wear safety glasses and stand well clear of the **On-Line Marking System** when in operation.

Safety Information

Throughout this manual, safety information is presented by the use of the terms WARNING, CAUTION, and NOTE. These terms have the following meanings:

WARNING

A warning contains critical information regarding potential safety hazards that can occur during proper use or misuse of the machine. Failure to follow these procedures may result in serious personal injury to the user.

CAUTION

A caution contains instructions for the use or maintenance of the machine. Failure to follow these procedures may result in damage to the machine. Supplementary information may be given in a Note.

ELECTRICAL HAZARD

An electrical hazard calls attention to a procedure, practice, or the like, which, if not correctly performed or adhered to, could result in personal injury. Do not proceed beyond an Electrical Hazard.

General Safety Precautions

WARNING

- This machine is equipped with a powerful tool head marking assembly. Keep hands, arms, and hair away from assembly at all times. Safety gloves, glasses, and appropriate clothing may prevent serious personal injuries.
- Disconnect the power supply to the machine when it is not in use or during routine maintenance, including cleaning and lubrication.
- The purchaser must instruct all operators in the proper use of the machine according to the instructions in this manual. This training must include instruction on the potential safety hazards arising from the use or misuse of the machine. In addition to such training, the purchaser should provide written work instructions as necessary to ensure correct use of the machine for specific cutting and spreading applications.
- Do not modify this machine or disable safety features. Unauthorized modification may result in serious personal injuries to the user. Electrical connections to this machine must be made by a qualified electrician familiar with applicable codes and regulations.
- Safety labels must be kept clean and legible at all times. Call the Eastman Machine factory to order replacement labels.

Safety and Indemnification

During the life of the machine, the purchaser agrees to provide to all machine users (including its own employees and independent contractors) all relevant safety information, including warning labels and instruction manuals. The purchaser also agrees to maintain the safety features and working condition of the machine, and to adequately train all users in the safe use and maintenance of the machine. The purchaser agrees to defend, protect, indemnify, and hold Eastman Machine Company and its subsidiaries harmless from and against all claims, losses, expenses, damages, and liabilities to the extent that they have been caused by the purchaser's failure to comply with the terms and instructions of this manual.

Eastman®

Over a Century of Cutting Expertise

The **On-Line Marking System** is shipped with a kit containing parts and special tools necessary for proper setup and operation. To get the best performance, familiarize yourself with all the functions and adjustments of this equipment. Before any operation can take place, it is important that you carefully read and follow the instructions in this manual in the same sequence in which they are presented.

INSTALLATION

On-Line Marking System Installation

The **On-Line Marking System** weighs approx. 185 lbs. (84 Kg.) uncrated. Wooden braces are secured along the underside of the main tube for fork lift arm clearance only. Forklift arms should be placed under the frame when machine is lifted. Remove wood braces when machine is in final location.

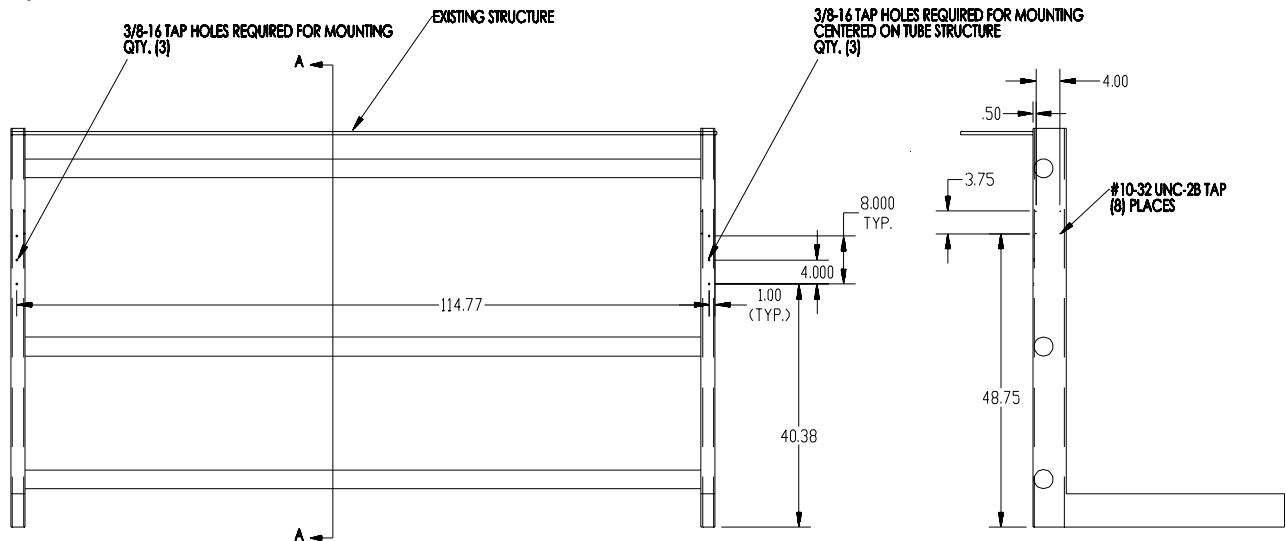
Modify the mounting structure as shown. Place the On-Line marking system on to the structure. Mount the roller assembly to the structure. Check for machine squareness and secure with mounting hardware provided.

Data, Power & Pneumatic Connection

All connections are made on the lower entry pan on the non-operator side of the machine. Verify connector locations as shown on page 11.

Check voltage rating of power cord with electrical rating stamped on the serial number plate. If compatible, connect cord to mating power feed connector on the non-operator side frame.

Note: Voltage varying more than 10% (11v for 110 volt machine, 22v for 220 volt machine) may damage your system's electronics.



Installation Diagram

SECTION A-A

OPERATION



WARNING

Keep hands and loose objects away from Roller Tube Assembly.



Important

To stop the On-Line Marking System at any point during operation, either:

- Push Main Power button (Red) (operator side).
- Push the Emergency Stop Button (Red) Non-Operator side).

Automatic Operation

The On-Line Marking System is design to automatically mark material as a flaw passes under the gantry. When a flaw is identified, a location signal is sent to the PC control panel. The PC control panel locates the tool head over the flaw position and marks the flaw. To run in automatic mode go to the main menu and select run. See Main Mode Section.

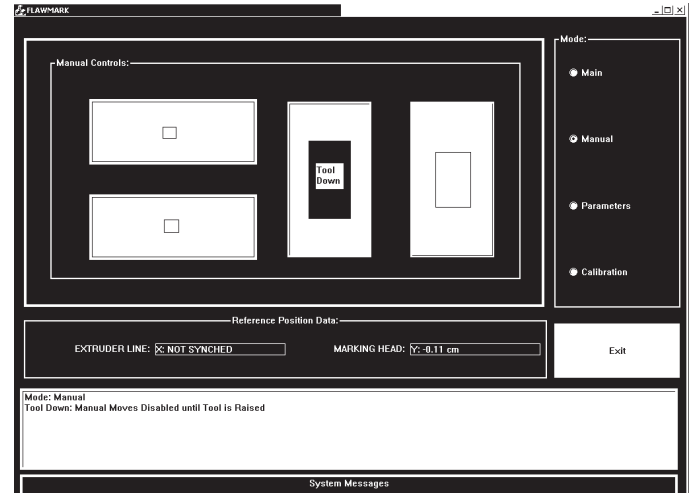
Manual Operation

Manual operation allows the operator to move the tool head and actuate the marking tool up and down. To run in manual mode go to the main menu and select stop. Go to manual mode and select as desired. See manual mode section.

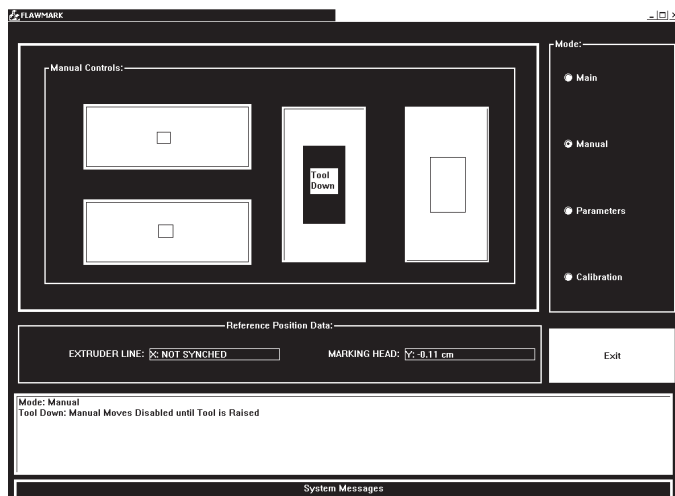
Main Mode (Menu Selection)



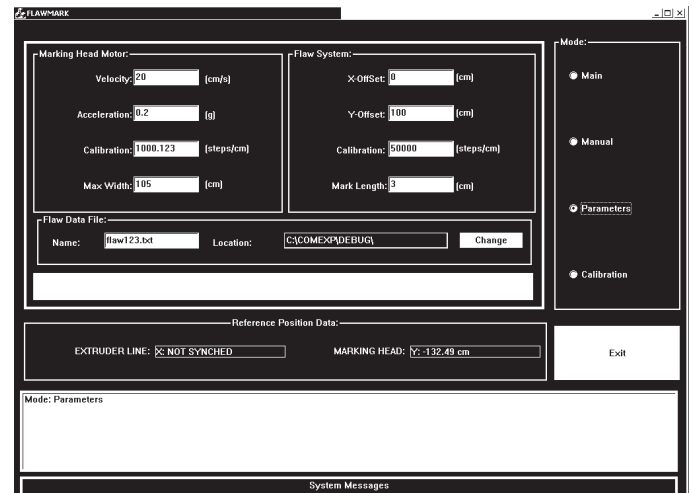
Manual Mode Home Motor Menu (Menu Selection)



Manual Mode (Menu Selection)

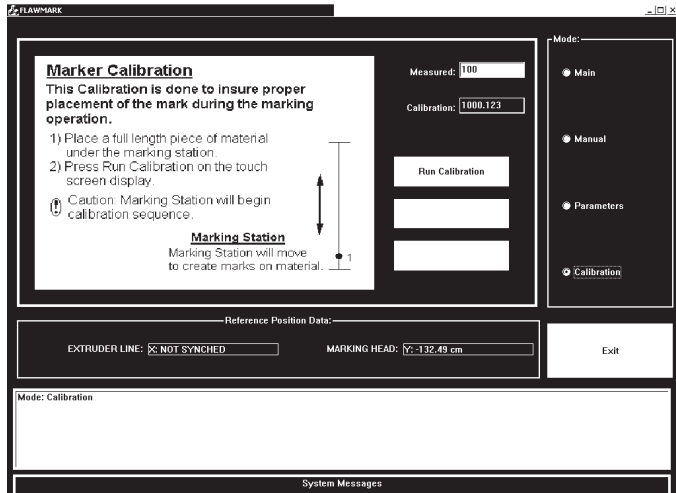


Parameters Mode (Menu Selection)



Calibration Mode (Menu Selection)

new.

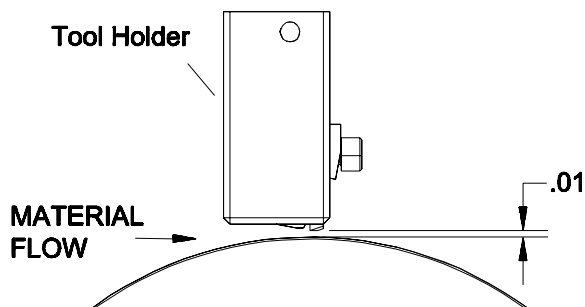


OPERATING ADJUSTMENTS

Stroke Depth

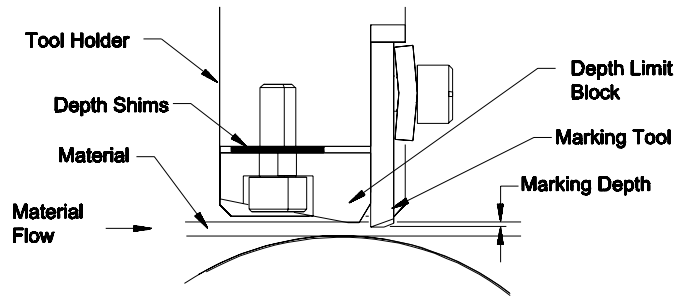
Proper stroke depth must be maintained for maximum marking tool life. Damage can result if marking tool contacts the roller tube.

To adjust the stroke depth, relieve the air pressure from the system. Press the adjusting dial located on the top of the air cylinder to its down position. Measure the gap as shown. Turn the cylinder adjustable stop clockwise to increase gap and counter clockwise to decrease gap.



Flaw Marking Blade Depth

The flaw marking blade depth is determined by the size of the required mark. Testing will yield the best results. To adjust size of mark; add depth shims to decrease size of mark and remove depth shims to increase size of mark. Refer to page 17 for illustration.

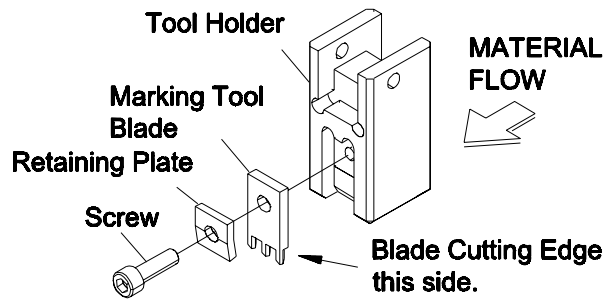


MAINTENANCE

The On-Line Marking System has been designed for maintenance free operation except as noted. Periodic cleaning of your system is assumed.

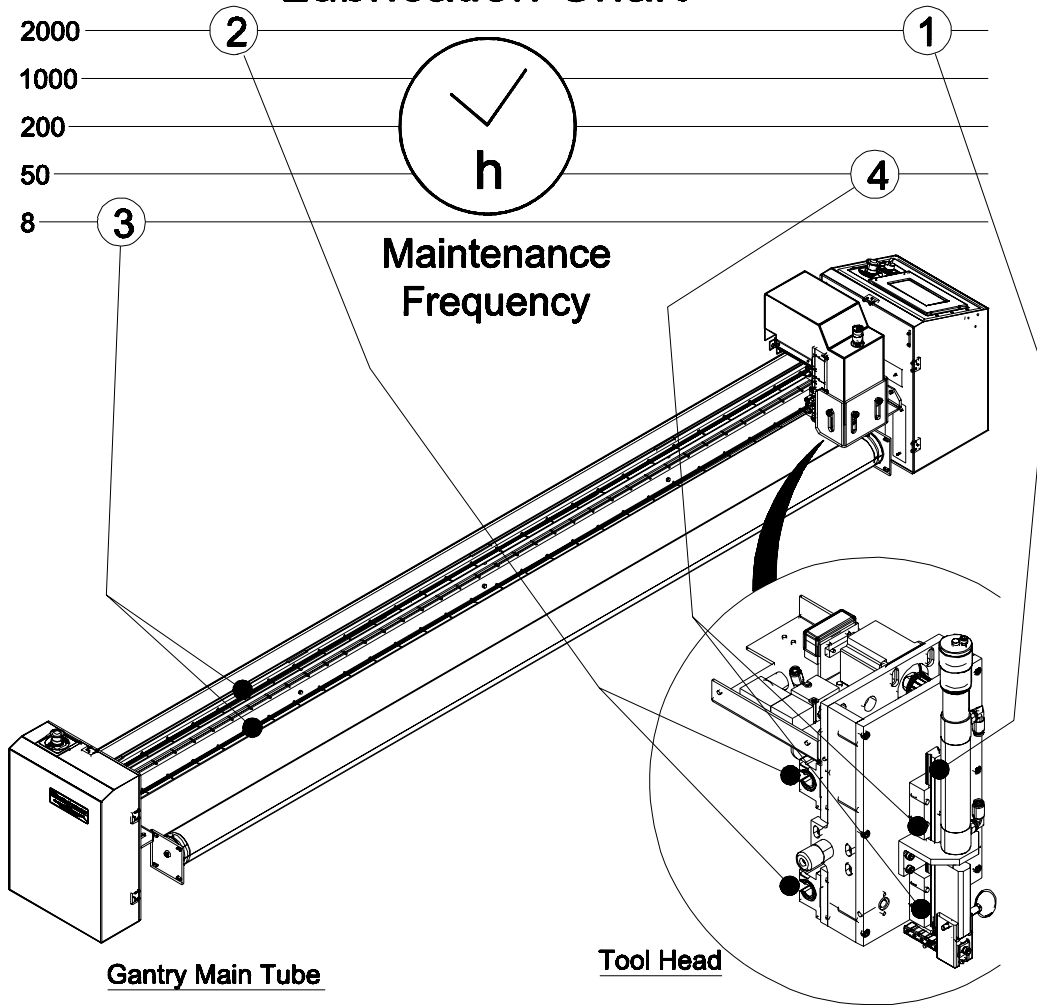
Changing the Marking Tool

The Marking Tool is design for many hour of extended use. Experimentation with your specific material will yield the blade life. Examine the marks on you material periodically. As the marks begin to deteriorate, change the blade as shown. Note: The blade cutting edge must be installed as shown.



Lubrication
See Chart

Lubrication Chart

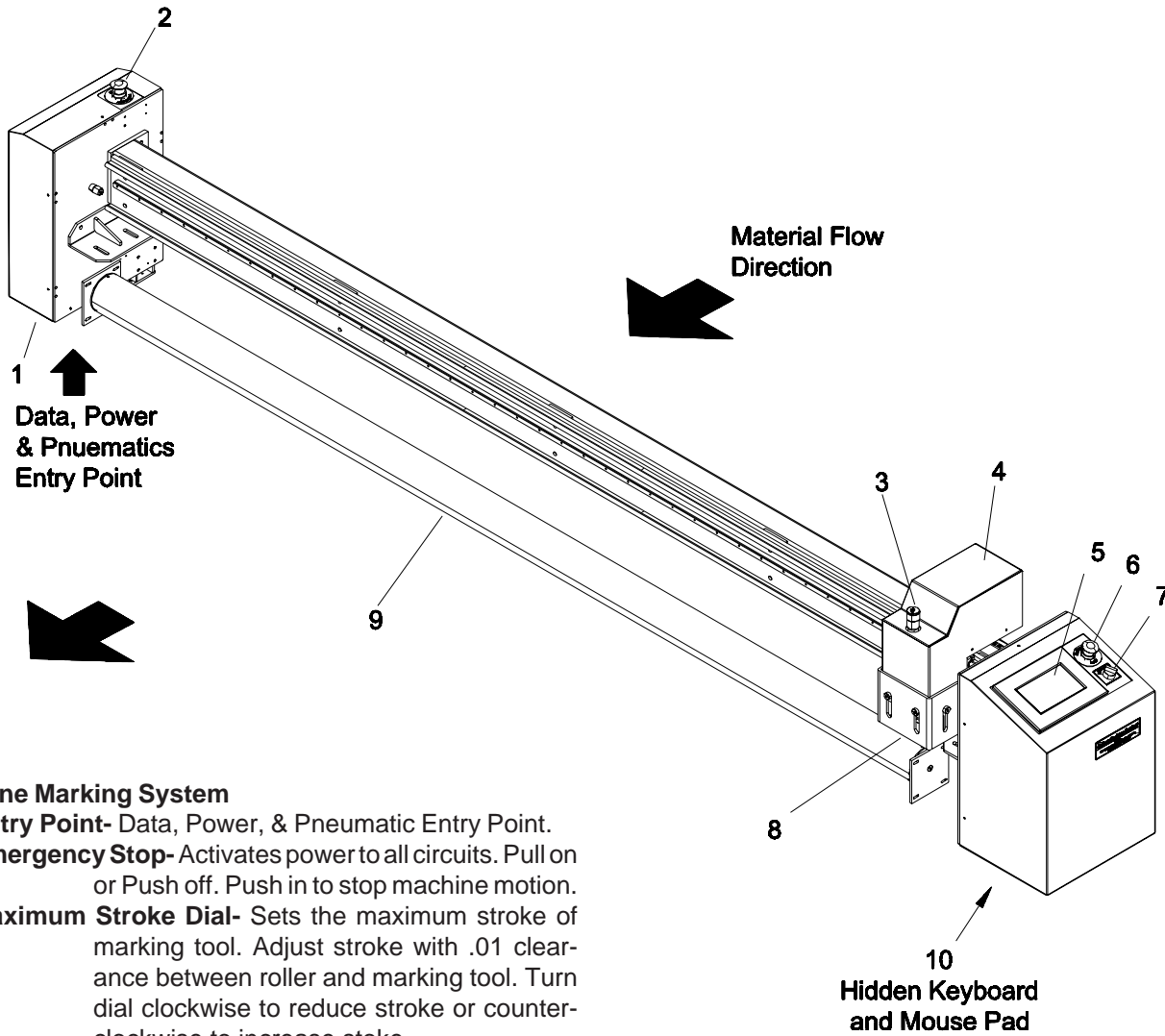


Machine Component	Tool	Y-Car	Gantry Rail	Tool Rail				
Nature of Action / Action Point	1	2	3	4				
Clean & Lube			8	50				
Replenish	2000	2000						
Libricant Designation	Mobil: NLG1 Grade 2 Moblith AW-2		Mobil: SAE 10 Non-detergent Vactra No. 1		Loctite: Krytox PFPE Lubricant mfg# 29711			
Eastman No.	67-26324		67-26325		67-26009			

Eastman®

Over a Century of Cutting Expertise

FAMILIARIZATION

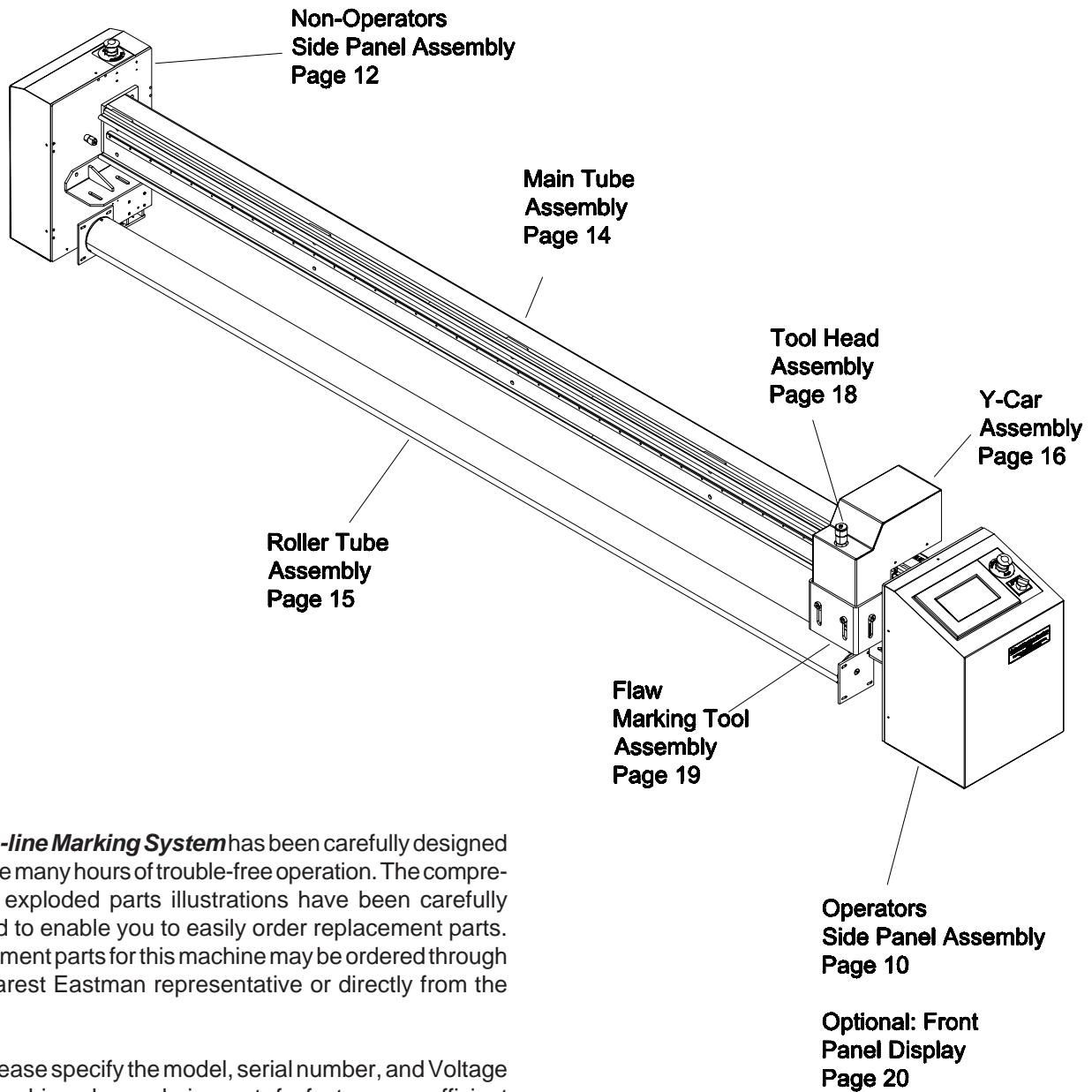


On-Line Marking System

1. **Entry Point**- Data, Power, & Pneumatic Entry Point.
2. **Emergency Stop**- Activates power to all circuits. Pull on or Push off. Push in to stop machine motion.
3. **Maximum Stroke Dial**- Sets the maximum stroke of marking tool. Adjust stroke with .01 clearance between roller and marking tool. Turn dial clockwise to reduce stroke or counter-clockwise to increase stroke.
4. **Y-Car Assembly**- Moves tool across to marking location.
5. **Control Panel**- Touch screen interface for machine operation.
6. **Emergency Stop**- Activates power to all circuits. Pull on or Push off. Push in to stop machine motion.
7. **Computer Power Switch**- Activates power to computer. Turn selector to ON position to activate computer power.
8. **Marking Tool**- Tool used to mark flaw location. See maintenance section for proper depth limit setting.
9. **Roller Tube**- Roller tube supports material during marking process. Note: Marking tool should note contact this tube.
10. **Hidden Keyboard & Mouse Pad**- Required for initial setup. Remove cover for access.

Pictorial Index

On-Line Marking System



Your **On-line Marking System** has been carefully designed to provide many hours of trouble-free operation. The comprehensive exploded parts illustrations have been carefully prepared to enable you to easily order replacement parts. Replacement parts for this machine may be ordered through your nearest Eastman representative or directly from the factory.

Note: Please specify the model, serial number, and Voltage of your machine when ordering parts for faster, more efficient service.

Eastman®

Over a Century of Cutting Expertise

Operators Side Frame Assembly

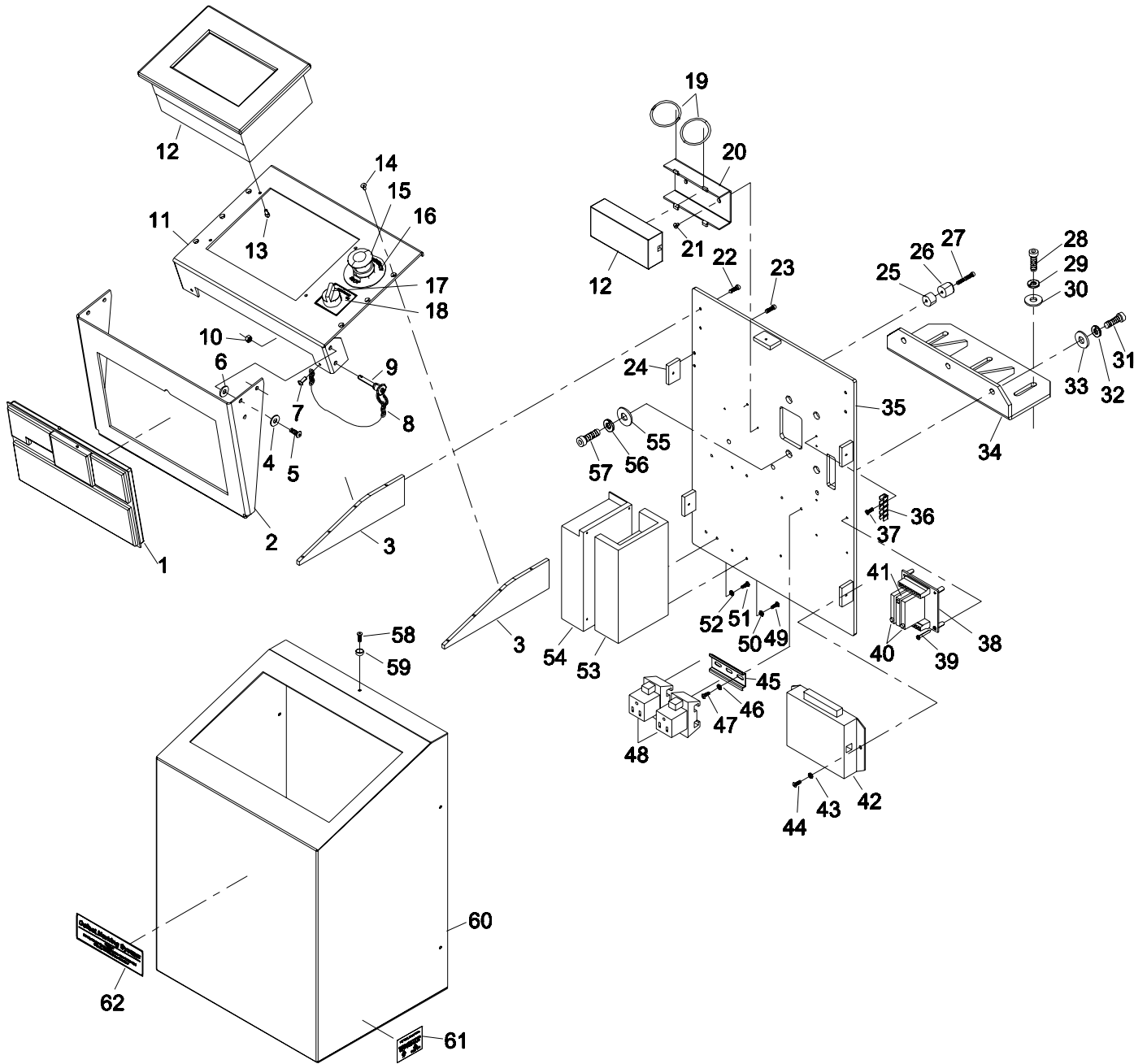
68-26194

ITEM	PART NO.	DESCRIPTION	QTY.
1	11-00023	Key Board & Mouse	1
2	54-26903	Pivot Panel Mount	1
3	54-C0334	Panel Support	2
4	9001-0001	Nylon Washer	2
5	333-34-8z	Screw, Button Hd. 1/4-20 x 1/2	2
6	PM-11465	Spring Washer	2
7	333-102-8	Screw, Button Hd. #10-32 x 1/2	1
8	E-120	Chain	1
9	9144-001	Quick Release Pin	1
10	211-34	Elastic Stop Nut, 1/4-20	2
11	54-26885	Control Panel	1
12	10-26076	Computer, Panel PC	1
13	335-93-6	Screw, Socket Hd. #8-32 x 3/8	4
14	332-93-6	Screw, Flat Hd. #8-32 x 3/8	6
15	31-26012-3	Emergency Stop Switch	1
16	91-26011-1	Decal, Emergency Stop	1
17	31-00828	Selector Switch, 22m	1
	31-00831	Contact Block, N/O	1
18	91-26051	Decal, Main Power	1
19	670-224	Locking O-Ring	2
20	54-26896	Mounting Bracket, Power Supply	1
21	332-86-4	Screw, Flat Hd. #6-32 x 1/4	2
22	335-93-8	Screw, Socket Hd. #8-32 x 1/2	4
23	335-93-8	Screw, Socket Hd. #8-32 x 1/2	10
24	54-C0306	Cover Blocks	5
25	54-26598	Mount, Shock Absorber	1
26	67-26402	Rubber Bumper, Absorber	1
27	335-93-20	Screw, Socket Hd. #8-32 x 1-1/4	1
28	331-38-16	Screw, Hex Hd. 3/8-16 x 1	3
29	402-38	Washer, Lock 3/8	3
30	410-38	Washer, Flat 3/8	3
31	331-38-12	Screw, Hex Hd. 3/8-16 x 3/4	3
32	402-38	Washer, Lock 3/8	3
33	410-38	Washer, Flat 3/8	3
34	54-26882	Bracket, Mounting	1
35	54-26883	Side Plate, Operator Side	1

ITEM	PART NO.	DESCRIPTION	QTY.
36	11-919	Grounding Tab	1
37	318-86-4	Screw, Pan Hd. #6-32 x 1/4	2
38	31-00900-1	Opto 22 Board, Universal I/O	1
39	402-060	Washer, Lock #6	4
	313-86-16	Screw, Round Head #6-32 x 1	4
40	31-00903	Opto-Input Module, G41	2
41	31-00906	Opto-Output Module, G40	1
42	11-00038	USB Quadrature	1
43	402-080	Washer, Lock #8	2
44	313-93-6	Screw, Round Hd. #8-32 x 3/8	2
45	31-00739-6	Din Mounting Rail	1
46	402-010	Washer, Flat #10	2
47	313-102-6	Screw, Round Hd. #10-32 x 3/8	2
48	31-27016	110v Receptacle, Din Mount Style	2
49	313-86-8	Screw, Round Hd. #6-32 x 1/2	4
50	402-060	Washer, Lock #6	4
51	313-86-8	Screw, Round Hd. #6-32 x 1/2	3
52	402-060	Washer, Lock #6	3
53	31-27004	Power Supply, 15v/5v/24v	1
	31-27004-2	Mount & Cover, Power Supply	1
54	31-27015	Power Supply, 24v/6a Smart Motor	1
55	410-44	Washer, Flat 1/2	4
56	402-44	Washer, Lock 1/2	4
57	331-43-16	Screw, Hex Hd. 1/2-13 x 1	4
58	333-93-8S	Screw, Button Hd. #8-32 x 1/2	5
59	409-93-1	Finish Washer, #8	5
60	54-26886	Front Cover, Flaw Marker	1
61	91-26026	Decal, Voltage ID	1
62	91-26052	Decal, Flaw Marker	1

Item numbers are for reference only.
Please Specify PART NUMBER when
ordering replacement parts.

Please Specify machine voltage and
complete serial number when ordering
replacement parts.



Eastman®

Over a Century of Cutting Expertise

Non-Operators Side Frame Assembly

68-26195

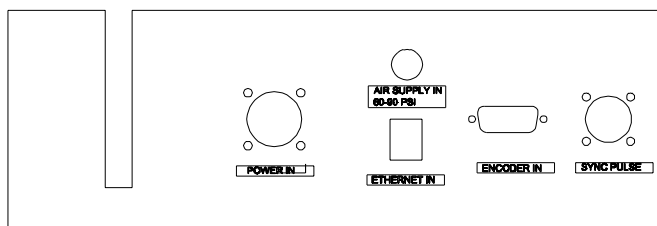
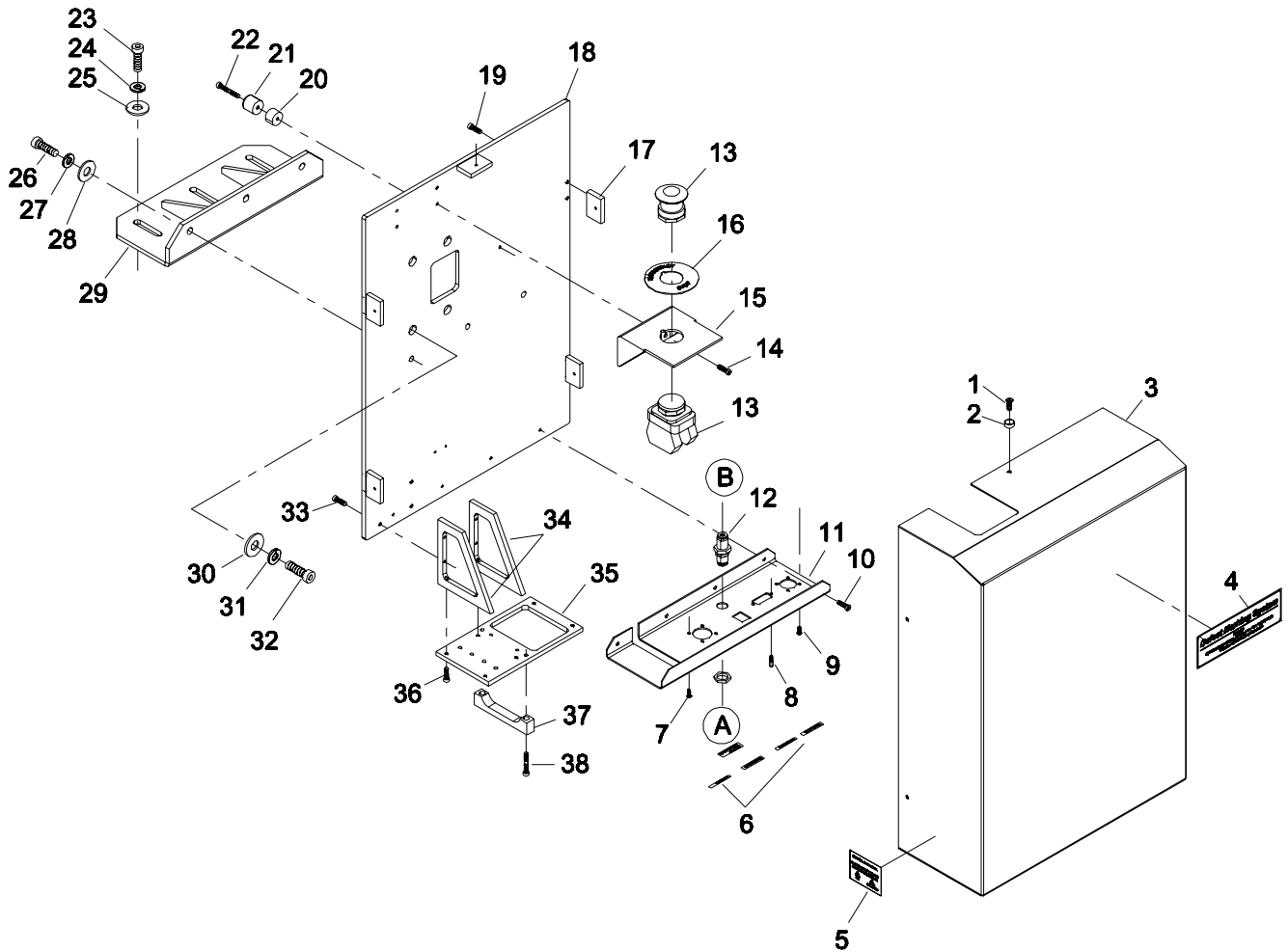
ITEM	PART NO.	DESCRIPTION	QTY.
1	333-93-8S	Screw, Button Hd. #8-32 x 1/2	5
2	409-93-1	Finish Washer, #8	5
3	54-26887	Back Cover, Flaw Marker	1
4	91-26052	Decal, Flaw Marker	1
5	91-26026	Decal, Voltage ID	1
6	91-26053	Decal, Entry Pan	1
7	333-86-4	Screw, Button Hd. #6-32 x 1/4	4
8	67-01005	Screw, Lock Stud, Hex	2
9	333-86-4	Screw, Button Hd. #6-32 x 1/4	4
10	335-93-6	Screw, Socket Hd. #8-32 x 3/8	4
11	54-26904	Entry Pan, Non-Op. Side	1
12	100-17-1	Bulk Hd. Union, 1/4" Tube	1
13	31-26012-3	Emergency Stop Switch	1
14	335-102-6	Screw, Socket Hd #10-32 x 3/8	4
15	54-26828	Bracket, Stop Switch	1
16	91-26011-1	Decal, Emergency Stop	1
17	54-C0306	Cover Blocks	5
18	54-26884	Side Plate, Non-Op Side	1
19	335-93-8	Screw, Socket Hd. #8-32 x 1/2	10

ITEM	PART NO.	DESCRIPTION	QTY.
20	54-26598	Mount, Shock Absorber	1
21	67-26402	Rubber Bumper, Absorber	1
22	335-93-20	Screw, Socket Hd. #8-32 x 1-1/4	1
23	331-38-16	Screw, Hex Hd. 3/8-16 x 1	3
24	402-38	Washer, Lock 3/8	3
25	410-38	Washer, Flat 3/8	3
26	331-38-12	Screw, Hex Hd. 3/8-16 x 3/4	3
27	402-38	Washer, Lock 3/8	3
28	410-38	Washer, Flat 3/8	3
29	54-26882	Bracket, Mounting	1
30	410-44	Washer, Flat 1/2	4
31	402-44	Washer, Lock 1/2	4
32	331-43-16	Screw, Hex Hd. 1/2-13 x 1	4
33	335-93-8	Screw, Socket Hd. #8-32 x 1/2	4
34	54-C0435	Support, E-Chain	2
35	54-C0318	E-Chain Connecting Plate	1
36	335-93-8	Screw, Socket Hd. #8-32 x 1/2	4
37	54-C0320-1	Cable Clamp Strain Relief	1
38	335-34-20	Screw, Socket Hd. 1/4-20 x 1-1/4	2
39	100-12-6	1/4" Air Line	A/R

A/R - As Required

Item numbers are for reference only.
Please Specify PART NUMBER when
ordering replacement parts.

Please Specify machine voltage and
complete serial number when ordering
replacement parts.



CONNECTOR LOCATIONS

○ 1/4" AIR LINE 100-10-6

Eastman®

Over a Century of Cutting Expertise

Main Tube Assembly

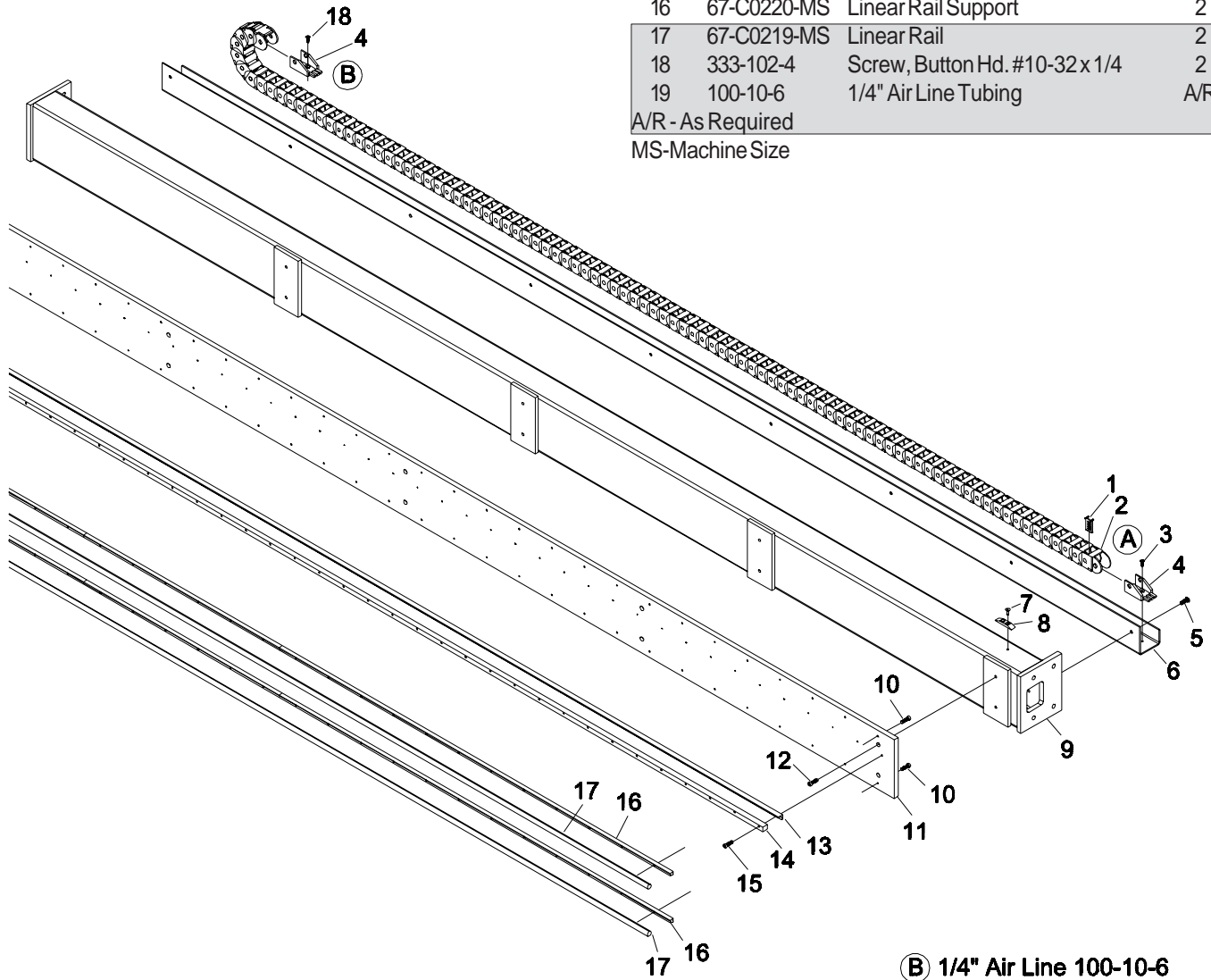
68-26193

Please Specify machine voltage and complete serial number when ordering replacement parts.

Item numbers are for reference only. Please Specify PART NUMBER when ordering replacement parts.

ITEM	PART NO.	DESCRIPTION	QTY.
1	67-26470-2	E-chain Divider	20
2	67-26470	E-chain (sold by the foot)	10
3	333-99-6	Screw, Button Hd. #10-24-3/8	2
4	67-26470-1	E-chain Mounting Bracket (Pair of)	1
5	333-34-8z	Screw, Button Hd. 1/4-20 x 1/2	9
6	54-26747-1	Belly Pan, Single Car Style	1
7	332-102-8	Screw, Flat Hd. #10-32 x 1/2	2
8	54-26807	Cam, Home Limit	1
9	54-26719	Main Tube Weldment	1
10	335-86-12	Screw, Socket Hd. #6-32 x 3/4	60
11	54-26720	Attachment Plate	1
12	335-34-12	Screw, Socket Hd 1/4-20 x 3/4	10
13	54-C0411-MS	Y-Rack Support	1
14	67-12990-1-MS	Gear Rack	1
15	333-86-16	Screw, Button Hd. #6-32 x 1	40
16	67-C0220-MS	Linear Rail Support	2
17	67-C0219-MS	Linear Rail	2
18	333-102-4	Screw, Button Hd. #10-32 x 1/4	2
19	100-10-6	1/4" Air Line Tubing	A/R

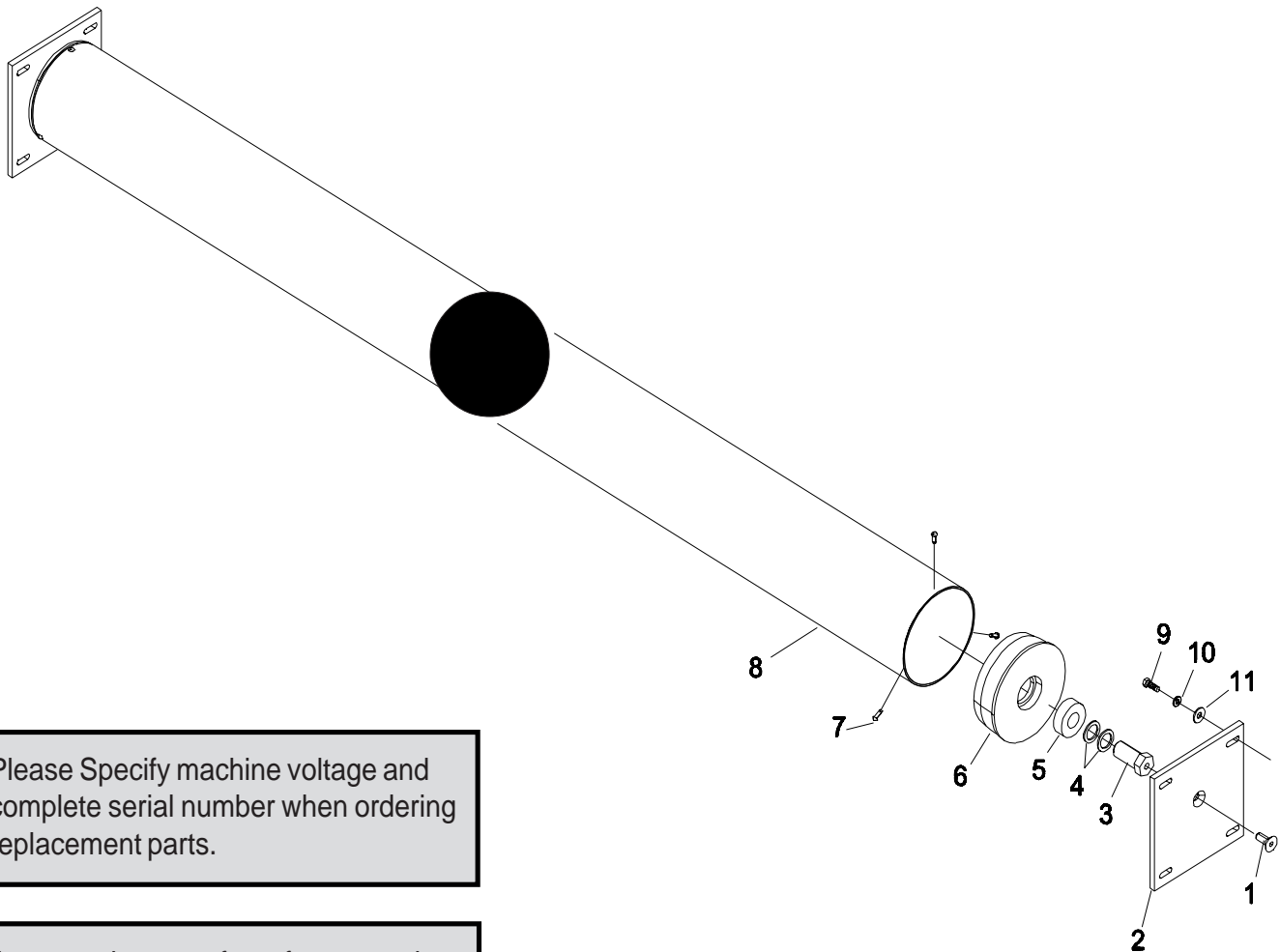
A/R - As Required
MS-Machine Size



Roller Tube Assembly

68-26201

ITEM	PART NO.	DESCRIPTION	QTY.
1	332-36-12	Screw, Flat Hd. 5/16-18 x 3/4	2
2	54-26906	Mounting Plate, Roller Tube	2
3	SY-10232	Roller Stud	2
4	411-48-2	Washer, Fiber 1/16 thk.	4
5	9020-0202	Bearing, Roller Tube	2
6	CHTW-2064	End Plug, Roller Tube	2
7	391-6-6	Rivet	6
8	54-26905	Roller Tube	1
9	335-102-12	Screw, Socket Hd. 10-32 x 3/4	8
10	410-010	Washer, Flat #10	8
11	402-010	Washer, Lock #10	8



Please Specify machine voltage and complete serial number when ordering replacement parts.

Item numbers are for reference only. Please Specify PART NUMBER when ordering replacement parts.

Eastman®

Over a Century of Cutting Expertise

Y-Car Assembly

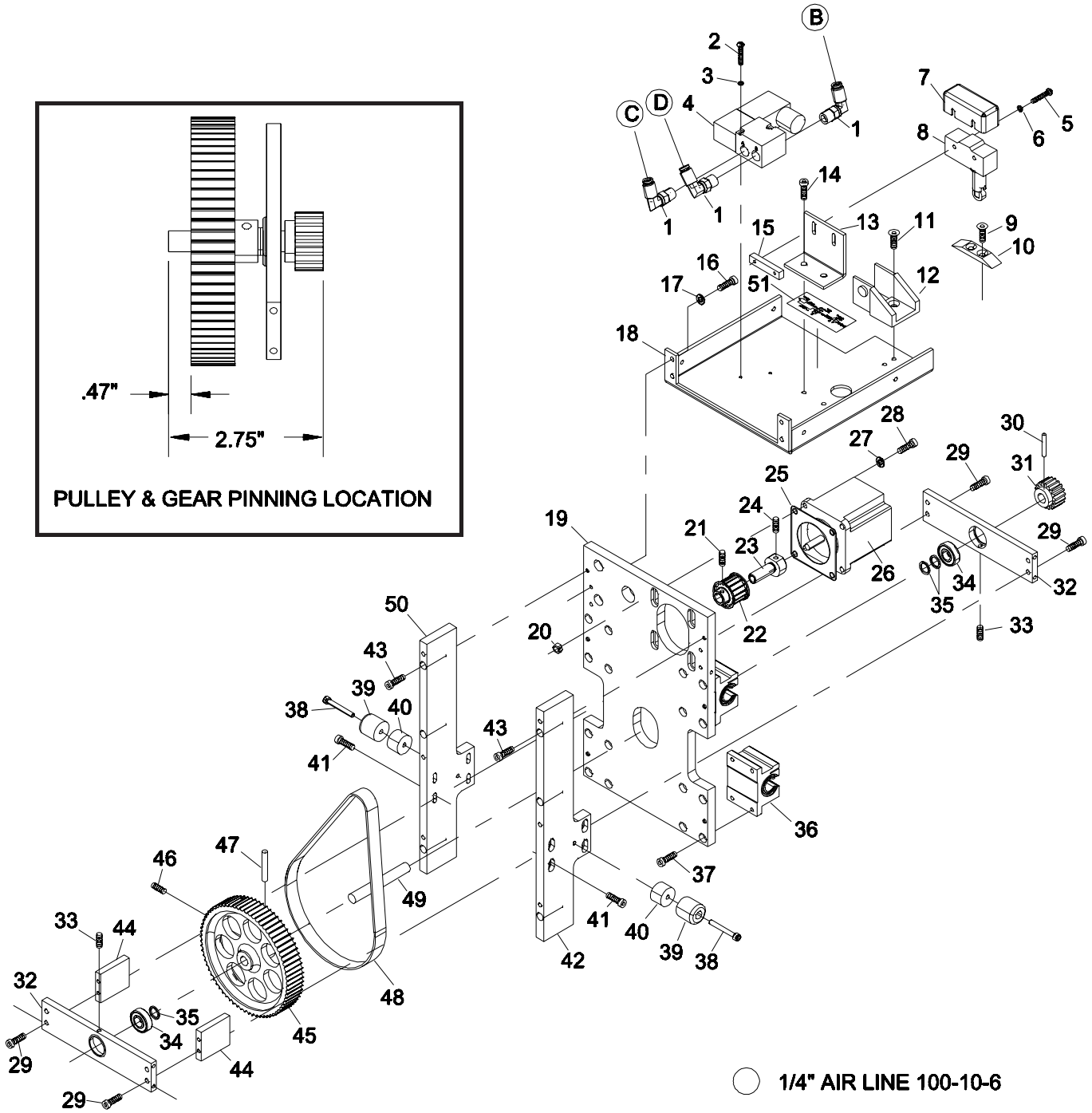
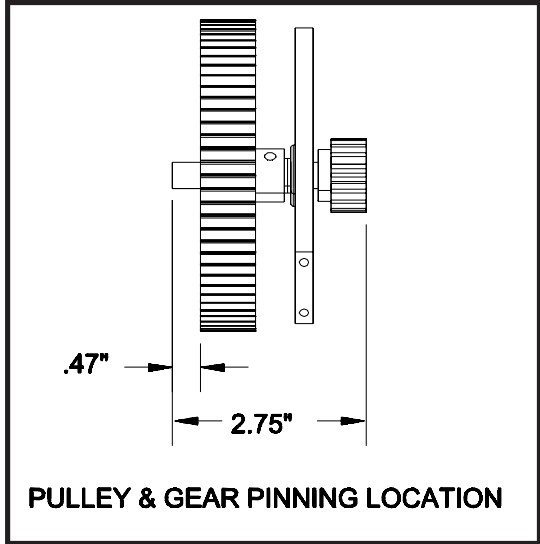
68-26198

ITEM	PART NO.	DESCRIPTION	QTY.
1	100-13-7	Elbow, 1/8 npt, 1/4 Push-on	3
2	313-81-20	Screw, Round Hd. #4-40 x 1-1/4	2
3	402-040	Washer, Flat #4	2
4	100-18-33	Solenoid Valve, 1/8 npt	1
5	313-86-20	Screw, Round Hd. #6-32 x 1-1/4	2
6	402-060	Washer, Lock #6	2
7	11-1167	Switch Cover	1
8	31-00921	Switch, In-line Roller, spdt	1
9	332-102-8	Screw, Flat Hd. #10-32 x 1/2	2
10	54-26807	Cam, Home Limit Switch	1
11	333-102-4	Screw, Button Hd. #10-32 x 1/4	2
12	67-26470-1	E-chain Mounting Bracket	1
13	54-26881	Bracket, Limit Switch Adjust	1
14	335-102-4	Screw, Socket Hd. #10-32 x 1/4	2
15	CH-72	Nut Plate, Limit switch	1
16	335-93-8	Screw, Socket Hd. #8-32 x 1/2	4
17	402-080	Washer, Lock #8	4
18	54-26880	Component Tray	1
19	54-26721	Main Plate, Y-car	1
20	211-93	Nut, Elastic Stop #8-32	4
21	342-93-3	Setscrew, #8-32 x 3/16	2
22	54-D0214	Pulley, 15g, 5mm Pitch	1
23	54-26799	Shaft Extension, Servo Motor	1
24	342-102-4	Setscrew, #10-32 x 1/4	1
25	54-26860	Gasket, Shock Mount	1
26	31-26345	Servo Smart Motor	1

ITEM	PART NO.	DESCRIPTION	QTY.
27	402-080	Washer, Lock #8	4
28	335-93-12	Screw, Socket Hd. #8-32 x 3/4	4
29	335-93-10	Screw, Socket Hd. #8-32 x 5/8	8
30	532-4-12	Pin, 1/8 x 3/4	1
31	54-26566	Spur Gear, 18 Tooth	1
32	54-26724	Backlash Plate	2
33	342-86-4	Setscrew, #6-32 x 1/4	2
34	67-00520	Bearing, 3/8 id. x 7/8 od.	2
35	411-38-1	Washer, Fibre 3/64 Thick	3
36	67-06818	Pillow Block Bearing	4
37	335-102-8	Screw, Socket Hd. #10-32 x 1/2	16
38	335-93-20	Screw, #8-32 x 1-1/4	2
39	67-26402	Rubber Bumper	2
40	54-26598	Mount, Rubber Bumper	2
41	335-93-10	Screw, Socket Hd. #8-32 x 5/8	8
42	54-26723	Side Plate, Right	1
43	335-93-14	Screw, Socket Hd. #8-32 x 7/8	6
44	54-26725	Cross Plate, Backlash	2
45	54-26560	Pulley, 72 Groove	1
46	342-102-4	Setscrew, #10-32 x 1/4	1
47	532-4-12	Pin, 1/8 x 3/4	1
48	67-26476	Belt, 5mm x 15mm, 100 tooth	1
49	67-26563	Drive Shaft, Y-car	1
50	54-26722	Side Plate, Left	1
51	91-26050	Decal, Pneumatic	1
52	100-10-6	1/4" Air Line Tubing	4

Item numbers are for reference only.
Please Specify PART NUMBER when
ordering replacement parts.

Please Specify machine voltage and
complete serial number when ordering
replacement parts.



○ 1/4" AIR LINE 100-10-6

Eastman®

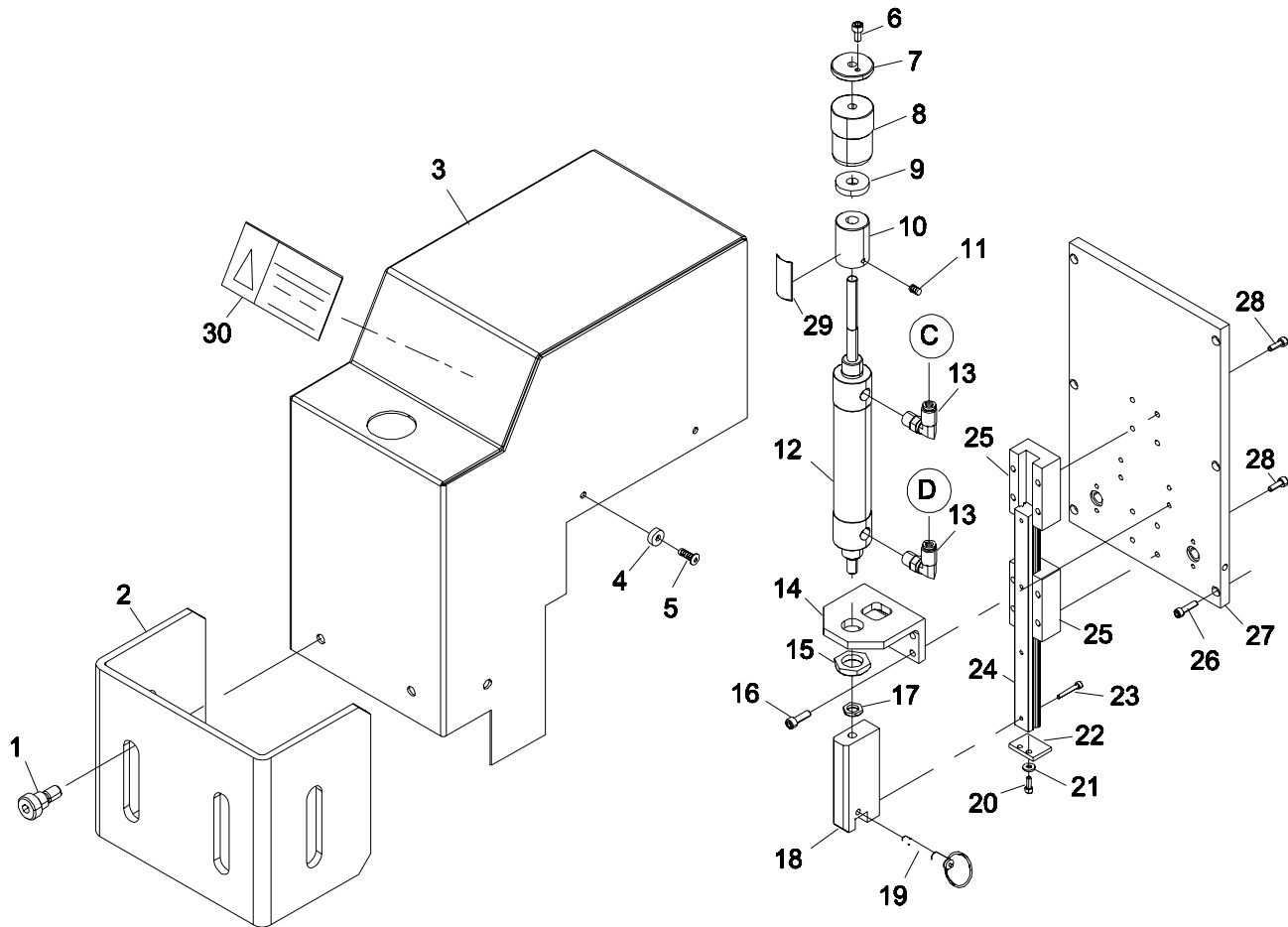
Over a Century of Cutting Expertise

Tool Head Assembly

68-26196

ITEM	PART NO.	DESCRIPTION	QTY.
1	355-44-6	Screw, Shoulder Type	4
2	67-26529	Guard, Marking Tool	1
3	54-26888	Cover, Marking Tool Head	1
4	409-99-1	Washer, Black	4
5	333-102-8S	Screw, Button Hd. 10-32 x 1/2	4
6	335-102-6	Screw, Socket Hd. 10-32 x 3.8	1
7	54-26698	Stop Lock Nut	1
8	54-26695	Adjustable Stop	1
9	54-26697	Bumper, Cylinder Stop	1
10	54-26696	Hard Stop	1
11	342-93-3	Setscrew, 8-32 x 3/16	1
12	27-26034	Cylinder, Double Rod	1
13	100-13-7	Male Elbow, 1/8 npt, 1/4 Tube	2
14	54-26728	Cylinder Mount	1
15	54-26152	Nut, Hex 5/8-18	1
16	335-102-10	Screw, Socket Hd. 10-32 x 5/8	4

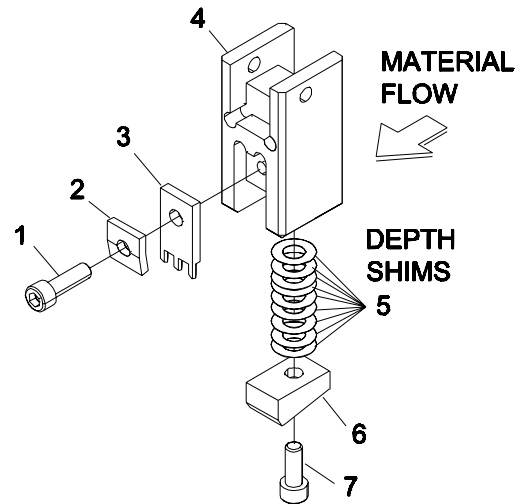
ITEM	PART NO.	DESCRIPTION	QTY.
17	206-37	Nut, Hex Jam 5/16-24	1
18	54-26729	Tool Holder	1
19	67-26468	Quick Change Pin	1
20	335-86-6	Screw, Socket Hd.	2
21	410-060	Washer, Flat #6	2
22	54-26733	Oil Pad	1
23	341-3-16	Screw, Socket Hd. M3 x 16mm	4
24	54-26727	Bearing Rail	2
25	67-26983	Bearing Block	2
26	335-93-10	Screw, Socket Hd. 8-32 x 5/8	6
27	54-26726	Mounting Plate, Main	1
28	341-4-12	Screw, Socket Hd. M4 x 12mm	8
29	91-26054	Decal, Veneer Scale	1
30	236C1-171	Label, Caution	1



Flaw Marking Tool Assembly

68-26200

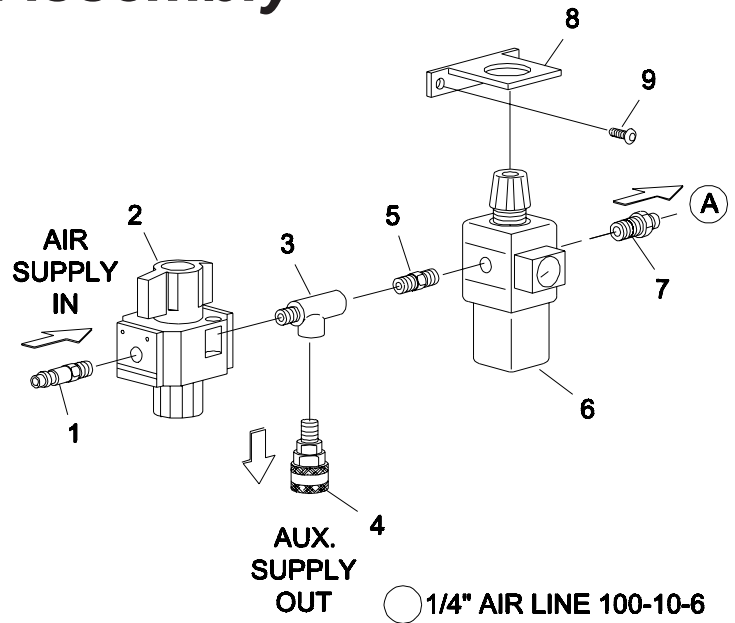
ITEM	PART NO.	DESCRIPTION	QTY.
1	335-102-10	Screw, Socket Hd. #10-32 x 5/8	1
2	54-26894	Retaining Plate	1
3	54-26893	Marking Blade	1
4	54-26892	Marking Tool Holder	1
5	9002-002	Depth Shims, .005 Thick	9
6	54-26895	Depth Limit Block	1
7	335-102-8	Screw, Socket Hd. #10-32 x 1/2	1



Lockout/Tagout Filter Assembly

9120-893

ITEM	PART NO.	DESCRIPTION	QTY.
1	100-11-3	Connector, Male 1/4 npt	1
2	100-18-1	Valve, Main Shut-off	1
3	100-14-3	Tee, Street	1
4	100-11-4	Quick Disconnect, Female 1/4 npt	1
5	100-19-1	Nipple, Close 1/4 npt	1
6	100-18-2	Regulator, Filter	1
7	100-11-2	Connector, Male 1/4 Tube, 1/4 npt	1
8	100-19-9	Mounting Bracket	1
9	333-34-8	Screw, Button Hd. 1/4-20 x 1/2	2



Eastman®

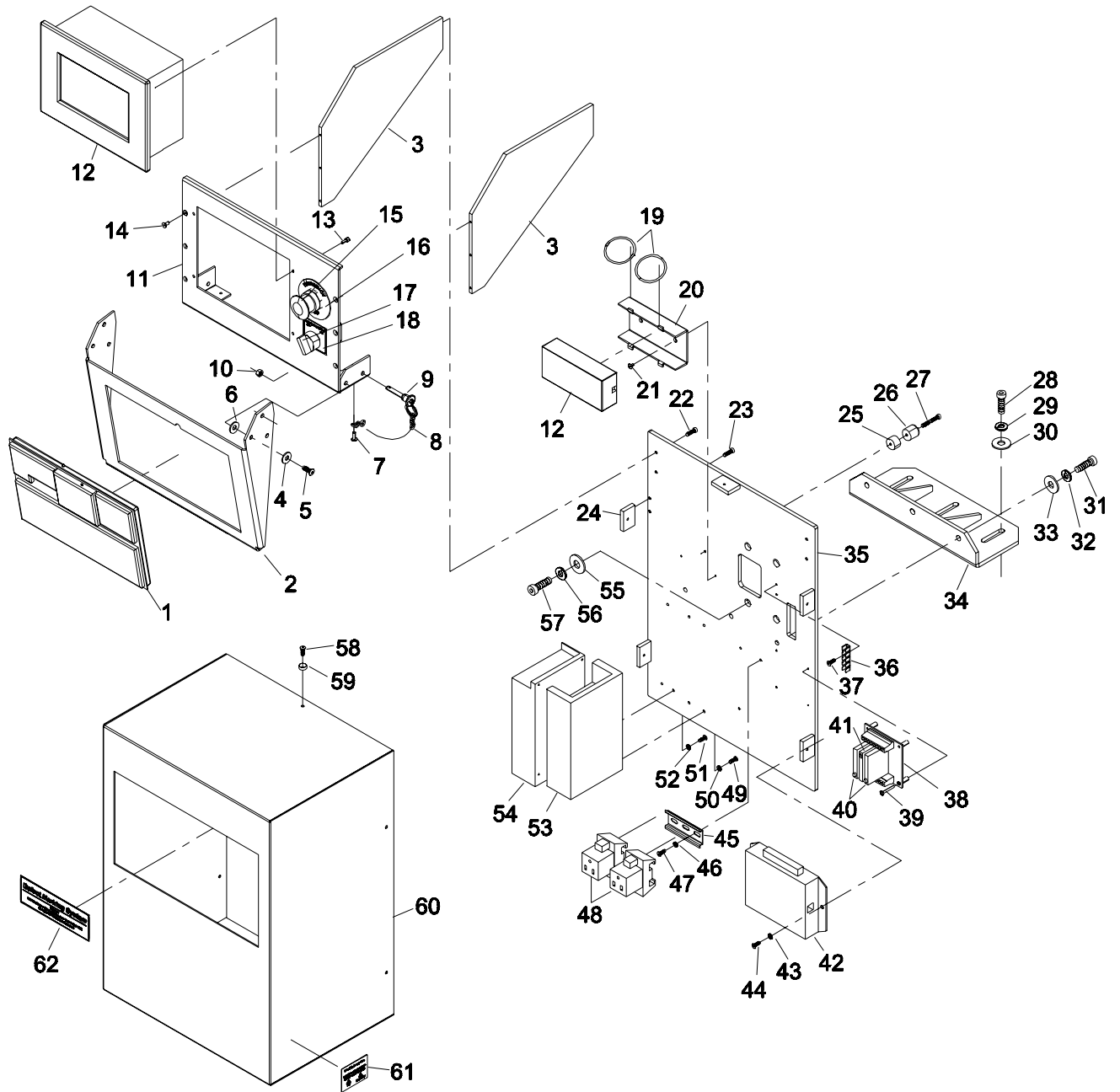
Over a Century of Cutting Expertise

Optional: Front Display Panel Side Frame Assembly

68-26194-1

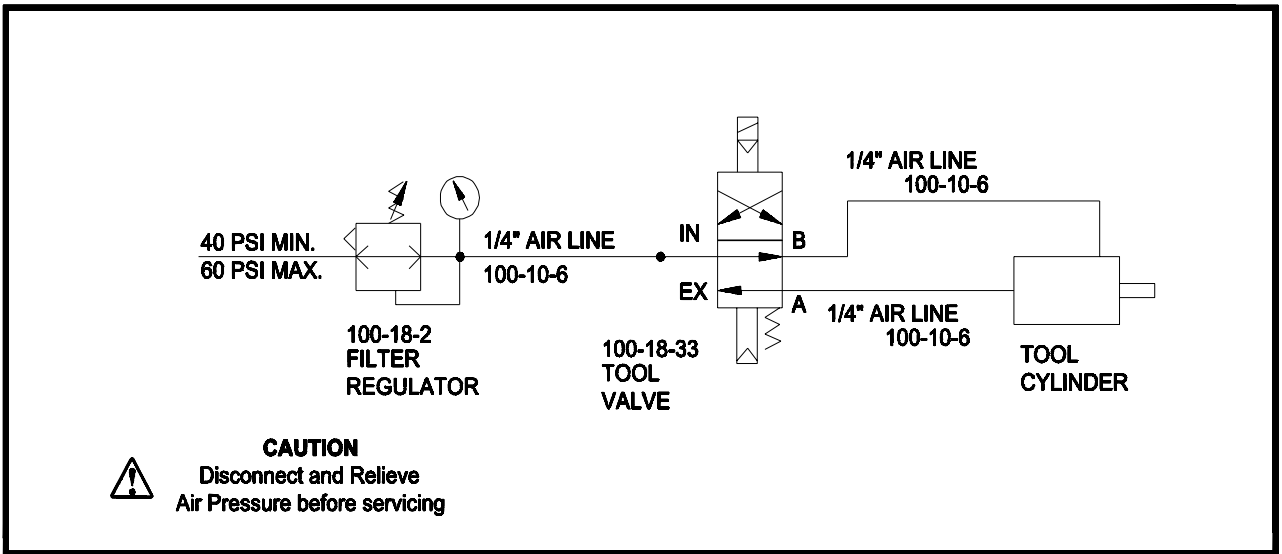
ITEM	PART NO.	DESCRIPTION	QTY.
1	11-00023	Key Board & Mouse	1
2	54-26903-1	Pivot Panel Mount, Front Display	1
3	54-26908	Front Mount Panel Support	2
4	9001-0001	Nylon Washer	2
5	333-34-8z	Screw, Button Hd. 1/4-20 x 1/2	2
6	PM-11465	Spring Washer	2
7	333-102-8	Screw, Button Hd. #10-32 x 1/2	1
8	E-120	Chain	1
9	9144-001	Quick Release Pin	1
10	211-34	Elastic Stop Nut, 1/4-20	2
11	54-26885	Control Panel	1
12	10-26076	Computer, Panel PC	1
13	335-93-6	Screw, Socket Hd. #8-32 x 3/8	4
14	332-93-6	Screw, Flat Hd. #8-32 x 3/8	6
15	31-26012-3	Emergency Stop Switch	1
16	91-26011-1	Decal, Emergency Stop	1
17	31-00828	Selector Switch, 22m	1
	31-00831	Contact Block, N/O	1
18	91-26051	Decal, Main Power	1
19	670-224	Locking O-Ring	2
20	54-26896	Mounting Bracket, Power Supply	1
21	332-86-4	Screw, Flat Hd. #6-32 x 1/4	2
22	335-93-8	Screw, Socket Hd. #8-32 x 1/2	4
23	335-93-8	Screw, Socket Hd. #8-32 x 1/2	10
24	54-C0306	Cover Blocks	5
25	54-26598	Mount, Shock Absorber	1
26	67-26402	Rubber Bumper, Absorber	1
27	335-93-20	Screw, Socket Hd. #8-32 x 1-1/4	1
28	331-38-16	Screw, Hex Hd. 3/8-16 x 1	3
29	402-38	Washer, Lock 3/8	3
30	410-38	Washer, Flat 3/8	3
31	331-38-12	Screw, Hex Hd. 3/8-16 x 3/4	3
32	402-38	Washer, Lock 3/8	3
33	410-38	Washer, Flat 3/8	3
34	54-26882	Bracket, Mounting	1
35	54-26883	Side Plate, Operator Side	1

ITEM	PART NO.	DESCRIPTION	QTY.
36	11-919	Grounding Tab	1
37	318-86-4	Screw, Pan Hd. #6-32 x 1/4	2
38	31-00900-1	Opto 22 Board, Universal I/O	1
39	402-060	Washer, Lock #6	4
	313-86-16	Screw, Round Head #6-32 x 1	4
40	31-00903	Opto-Input Module, G41	2
41	31-00906	Opto-Output Module, G40	1
42	11-00038	USB Quadrature	1
43	402-080	Washer, Lock #8	2
44	313-93-6	Screw, Round Hd. #8-32 x 3/8	2
45	31-00739-6	Din Mounting Rail	1
46	402-010	Washer, Flat #10	2
47	313-102-6	Screw, Round Hd. #10-32 x 3/8	2
48	31-27016	110v Receptacle, Din Mount Style	2
49	313-86-8	Screw, Round Hd. #6-32 x 1/2	4
50	402-060	Washer, Lock #6	4
51	313-86-8	Screw, Round Hd. #6-32 x 1/2	3
52	402-060	Washer, Lock #6	3
53	31-27004	Power Supply, 15v/5v/24v	1
	31-27004-2	Mount & Cover, Power Supply	1
54	31-27015	Power Supply, 24v/6a Smart Motor	1
55	410-44	Washer, Flat 1/2	4
56	402-44	Washer, Lock 1/2	4
57	331-43-16	Screw, Hex Hd. 1/2-13 x 1	4
58	333-93-8S	Screw, Button Hd. #8-32 x 1/2	5
59	409-93-1	Finish Washer, #8	5
60	54-26886-1	Front Cover, Front Display	1
61	91-26026	Decal, Voltage ID	1
62	91-26052	Decal, Flaw Marker	1



Eastman®

Over a Century of Cutting Expertise



Pneumatic Diagram Blue Print
No. (91-26050)

Eastman®

Over a Century of Cutting Expertise

TECHNICAL DATA

Eastman® On-Line Marking System

Patent Pending

On-Line Marking System

Side Edge Accuracy*	+/-1/8" (+/-3 mm)
Operating Voltage	110V (50/60 cycles)
	110V (50/60 Hz)
Power Requirement	110v @ 2 amps
Air Supply	20-90PSI
Machine Weight	Approx. 185 lbs. (84 kg)
Overall Machine Height	21" (533mm)
Overall Machine Width	141" (3581mm)
Overall Machine depth	15" (381mm)

Limited Warranty. Eastman warrants to the buyer that the equipment shall be free from defects in materials or workmanship for a period of 180 days commencing on the date of invoice. Any goods or parts claimed by the buyer to be defective must be returned to Eastman, freight charges prepaid, within the 180-day warranty period. If Eastman determines that the goods or parts are defective in materials or workmanship, Eastman's sole obligation under this warranty shall be, at Eastman's sole option, to repair or replace the defective goods or parts or to provide the buyer a credit equal to the portion of the purchase price allocable to the defective goods or parts. This warranty shall not apply if defects are caused by product misuse or neglect, if the machine has been altered or modified by the buyer, or if other than genuine Eastman belts, emery wheels, knives or parts are used in the machine. THIS WARRANTY IS THE ONLY WARRANTY APPLICABLE TO THIS PURCHASE. SELLER DISCLAIMS ALL OTHER WARRANTIES, EXPRESS OR IMPLIED, INCLUDING, BUT NOT LIMITED TO, THE IMPLIED WARRANTIES OF MERCHANTABILITY AND FITNESS FOR A PARTICULAR PURPOSE.

Limitation of Liability. Eastman's liability to the buyer, and the buyer's remedies from Eastman, whether in contract, negligence, tort, under any warranty or otherwise, shall be limited to the remedies provided in the foregoing Limited Warranty. In no event shall Eastman have any responsibility or liability to the buyer for (a) any special, indirect, incidental, or consequential damages, including, but not limited to, loss of use, revenue, or profit, even if Eastman has been advised of the possibility of such damages, or (b) any claim against the buyer by any third party. The price stated for the product sold is a consideration for limiting Eastman's liability.

Eastman®

Over a Century of Cutting Expertise