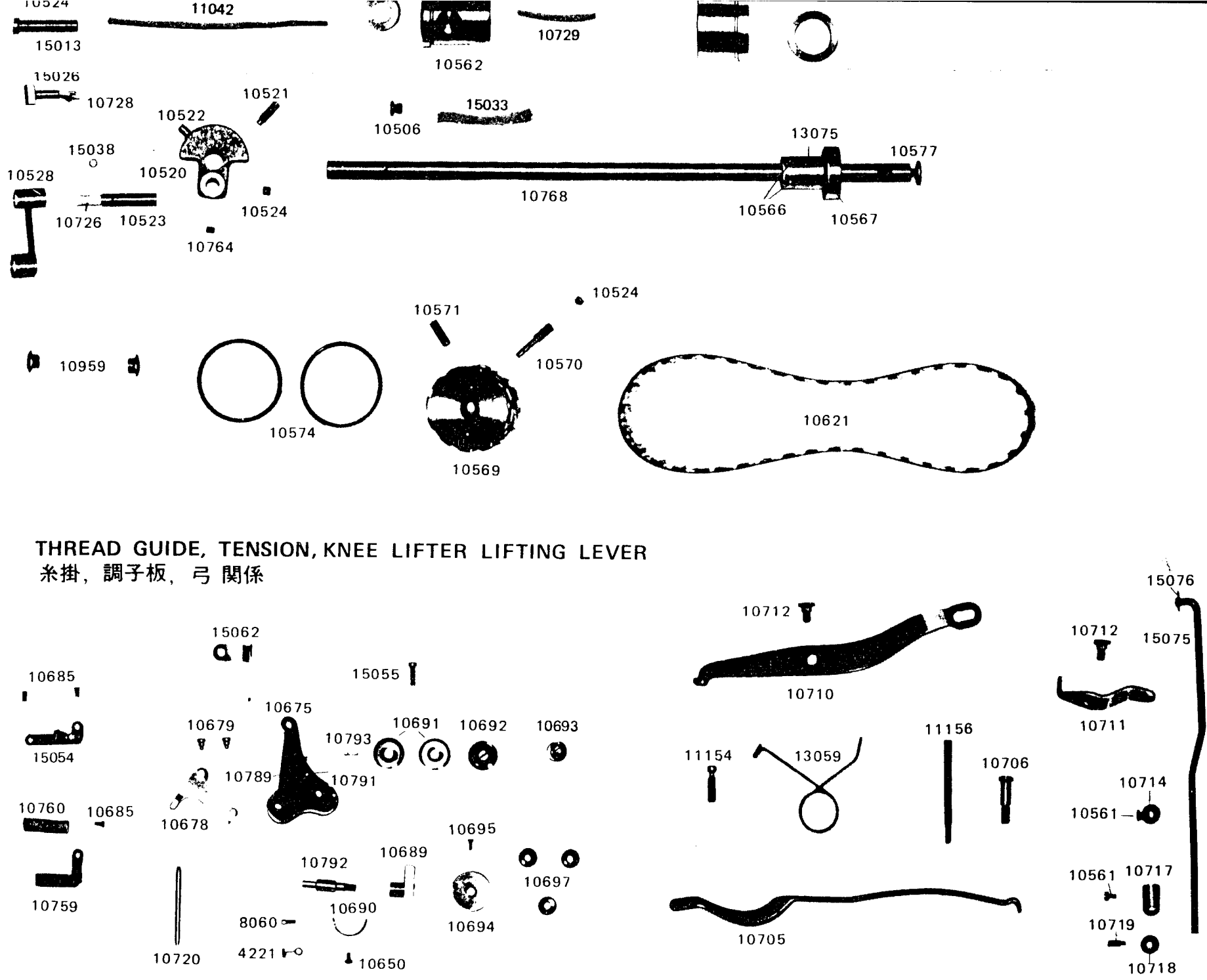


**SINGER**  
**210B6LG,7LG**



K  
L  
M  
N  
O  
P  
Q  
R  
S  
T  
U



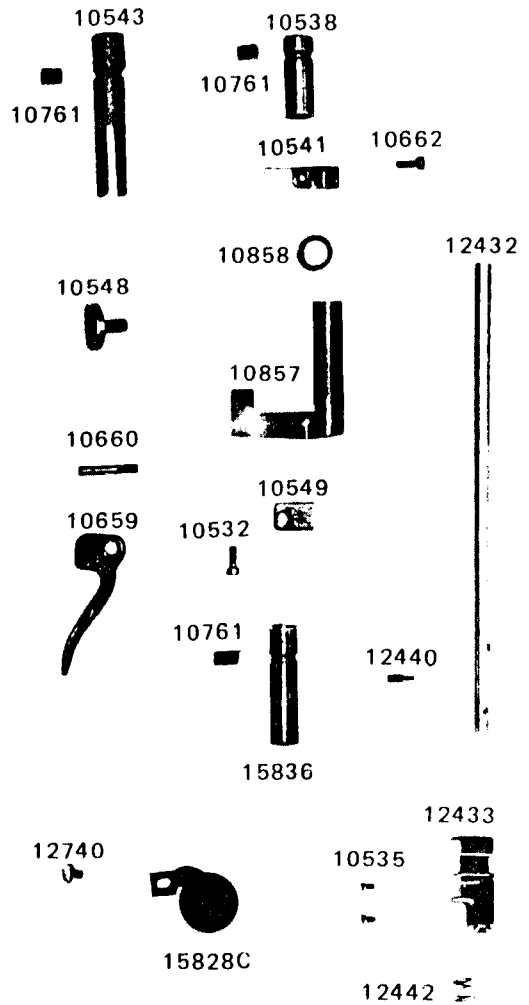
THREAD GUIDE, TENSION, KNEE LIFTER LIFTING LEVER  
糸掛, 調子板, 弓 関係

NOTE! WHEN ORDERING PARTS, PREFIX ALL NUMBERS WITH CS, EXAMPLE CS \_\_\_\_\_

1 2 3 4 5 6 7 8 9 10 11 12 13 14 15

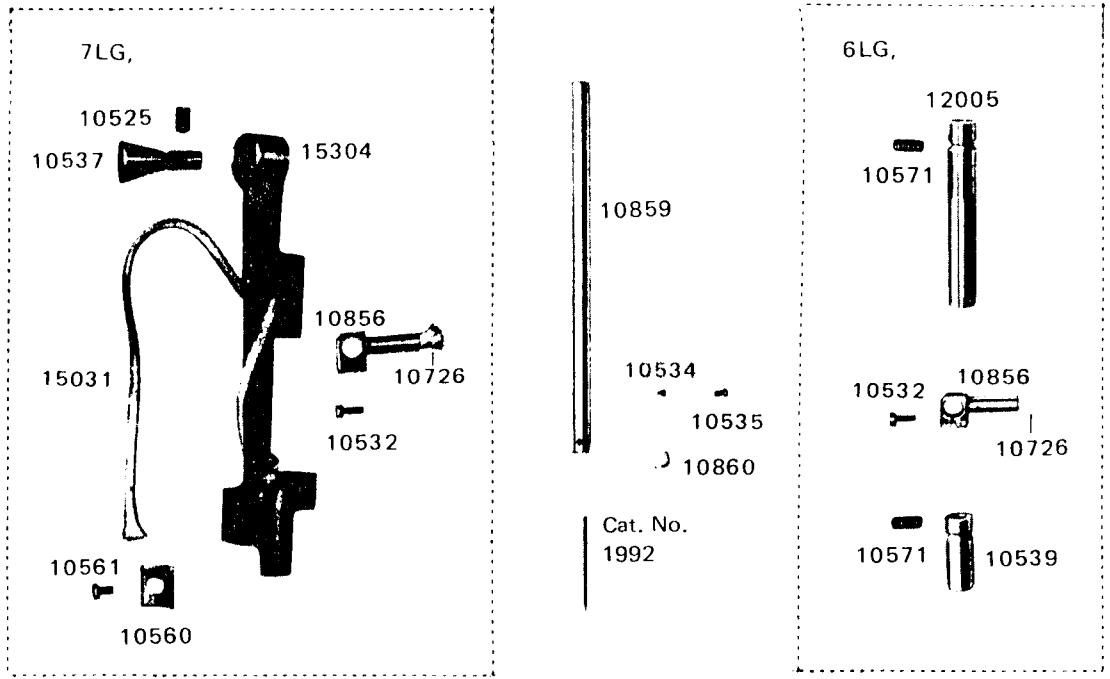
**PRESSER BAR MECHANISM**

押え棒関係



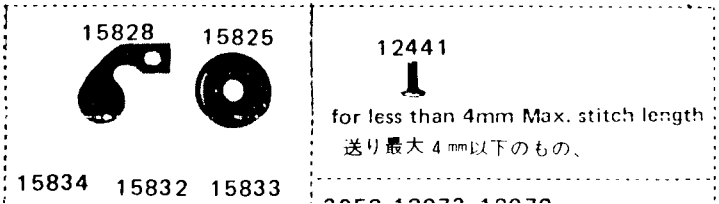
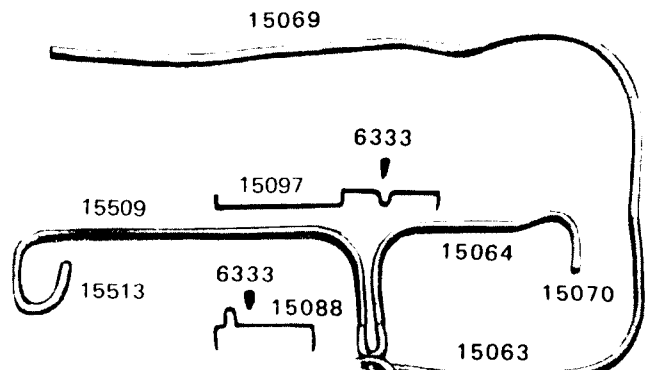
**NEEDLE BAR MECHANISM**

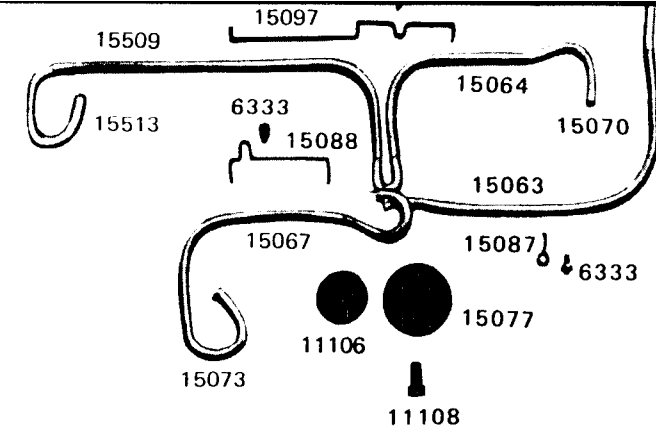
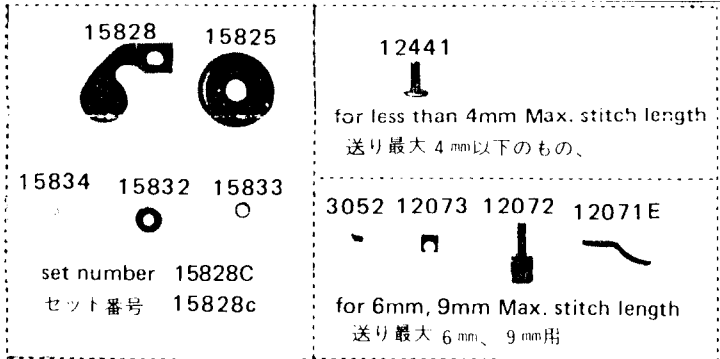
針棒関係



**OIL WICK FOR BED**

ベッド油芯関係





**SPECIFICATION FOR EACH MODEL 仕様別部品表**

Model 機種	Max. stitch length 送り最大 mm	bed slide ( left ) 角板(左)	needle plate 針板	bed slide ( right ) 角板(右)	thread take up lever 天秤	cover for thread take up lever 天秤カバー	feed driving eccentric adjusting disc うず巻カム	stitch length indicator 文字リング
6LG	4	10045	15749	10061	15705	15258	10909	15709
	9	10045	15749	10061	18003	15025	10626	10505
7LG	2.5	10045	15712	10061	15705	15258	10883	15704
	3.5	10045	15712	10061	15705	15258	15746	15706
	6	10045	15748	10061	15702	15025	15510	10943

**NOTE! WHEN ORDERING PARTS, PREFIX ALL NUMBERS WITH CS, EXAMPLE CS \_\_\_\_\_**

1 2 3 4 5 6 7 8 9 10 11 12 13 14 15

LOWER SHAFT, FEED MECHANISM

送り機構, 下軸関係

A

B

C

D

E

F

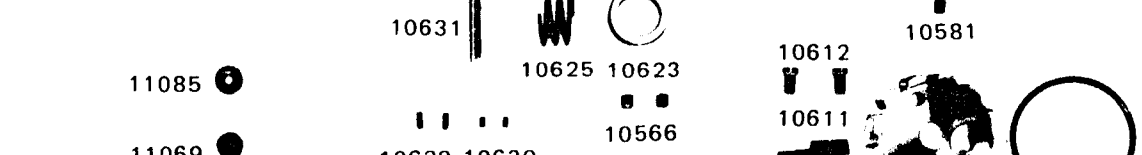
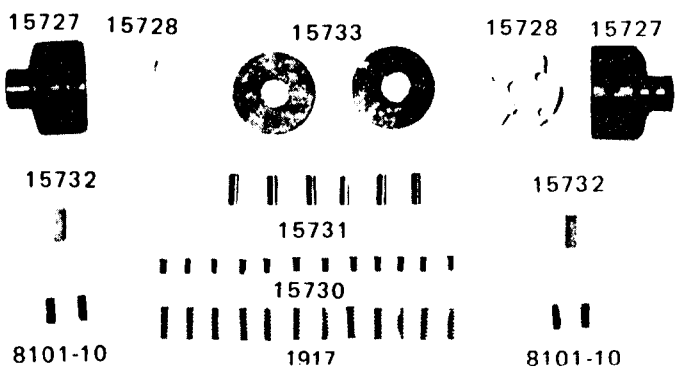
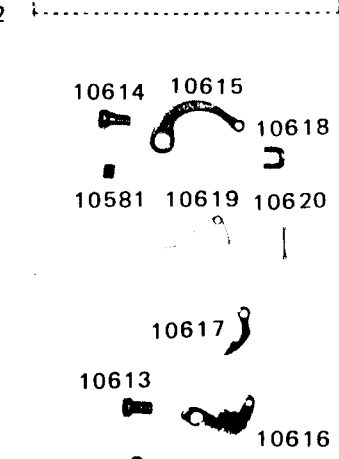
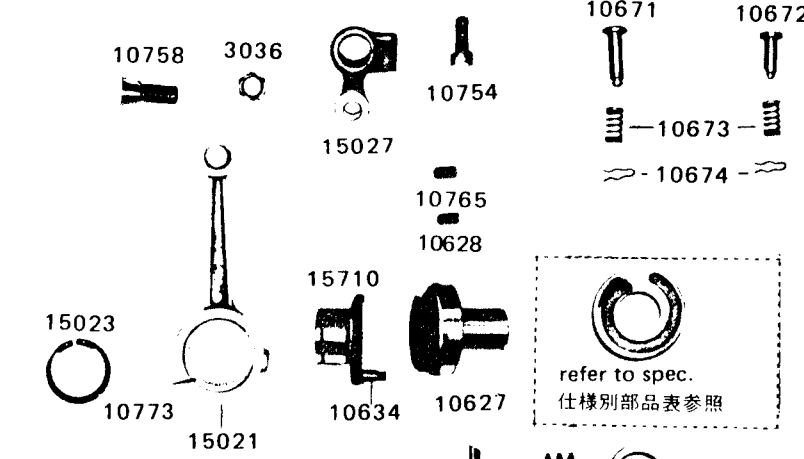
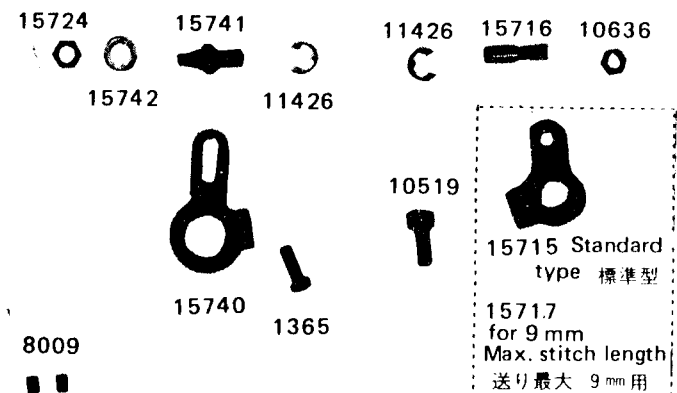
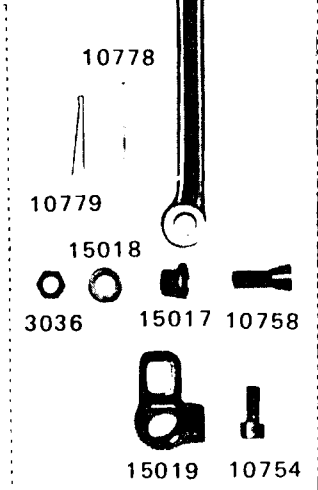
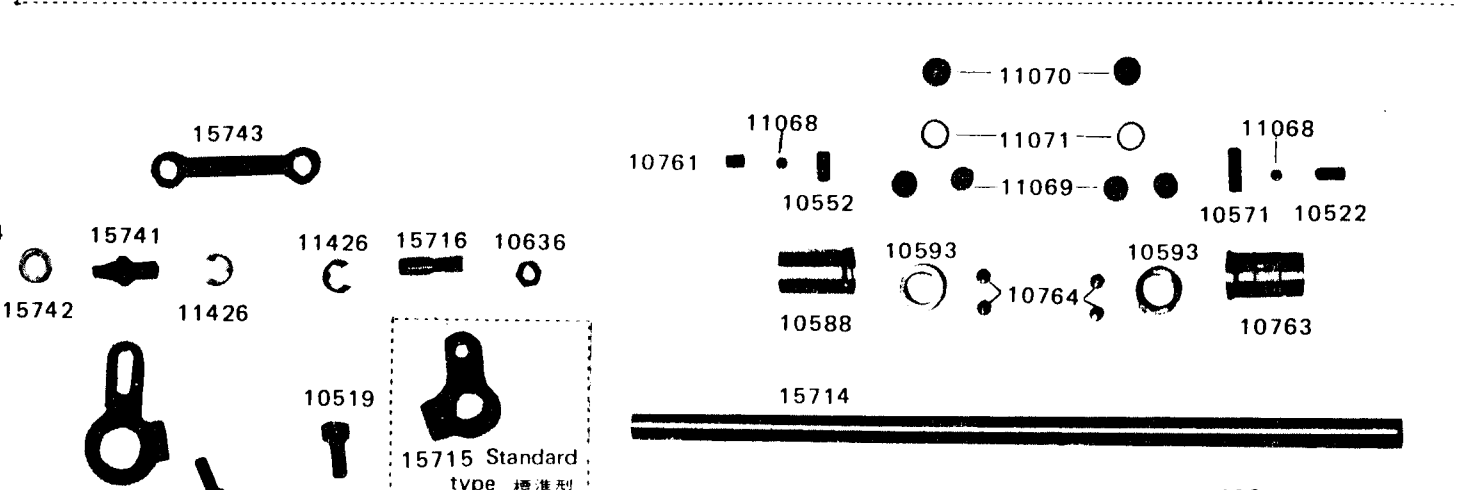
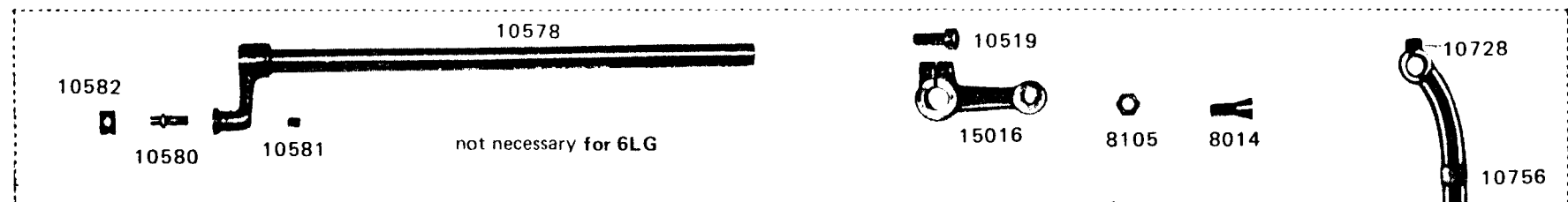
G

H

J

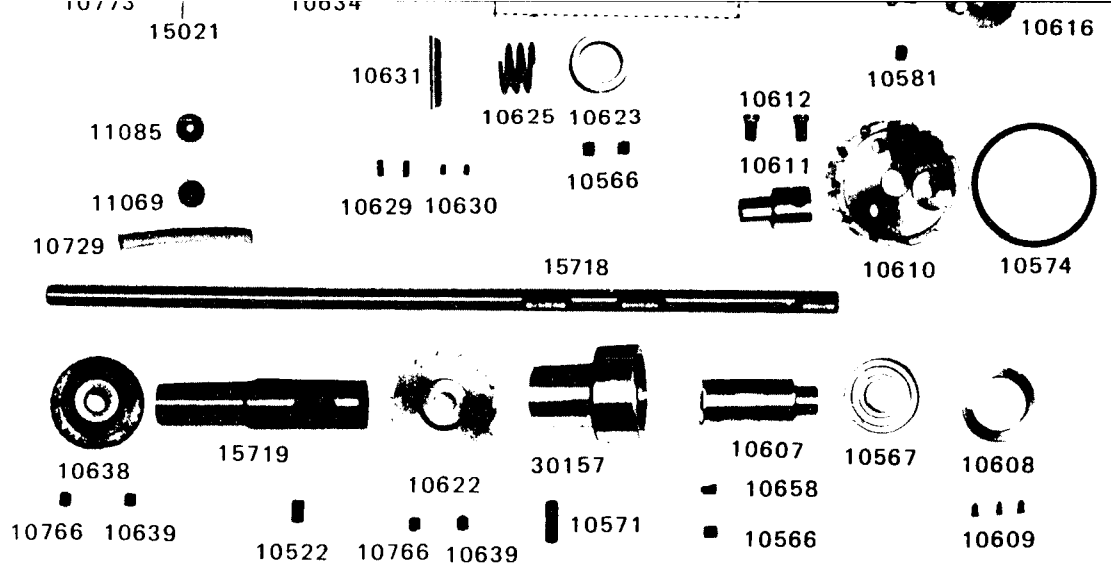
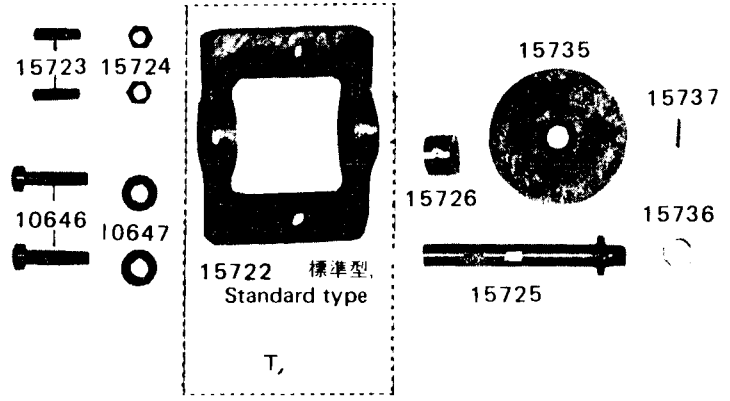
K

L

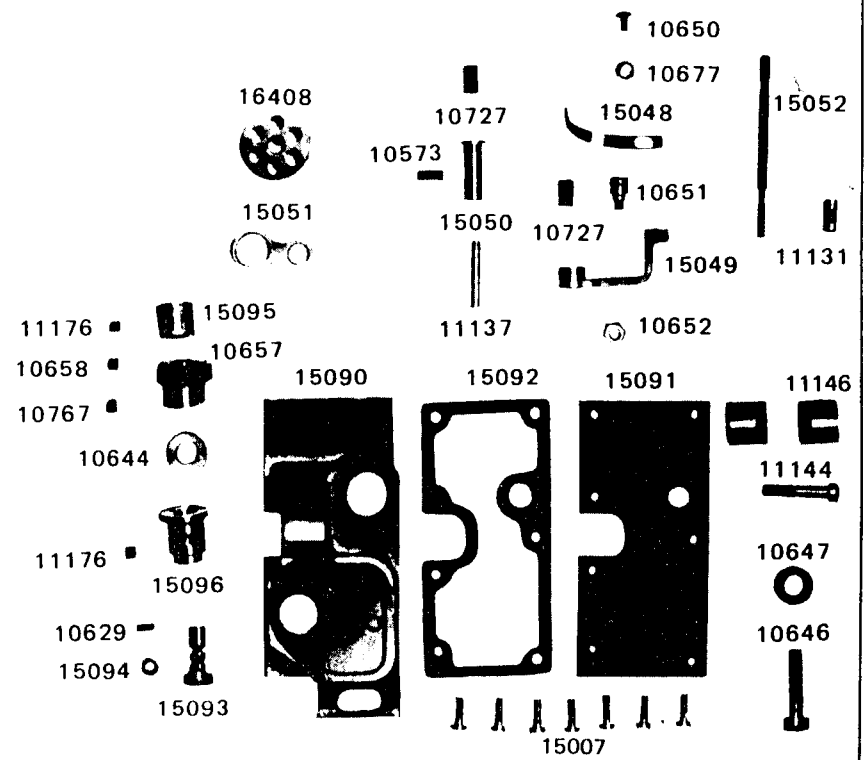
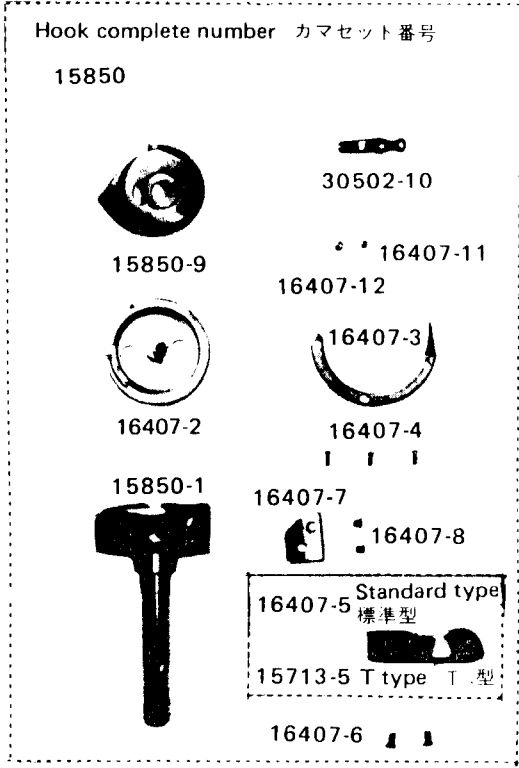


K  
L  
M  
N  
O  
P  
Q  
R  
S  
T  
U  
V

8101-10 15730 1917 8101-10



**HOOK MECHANISM カマ関係**

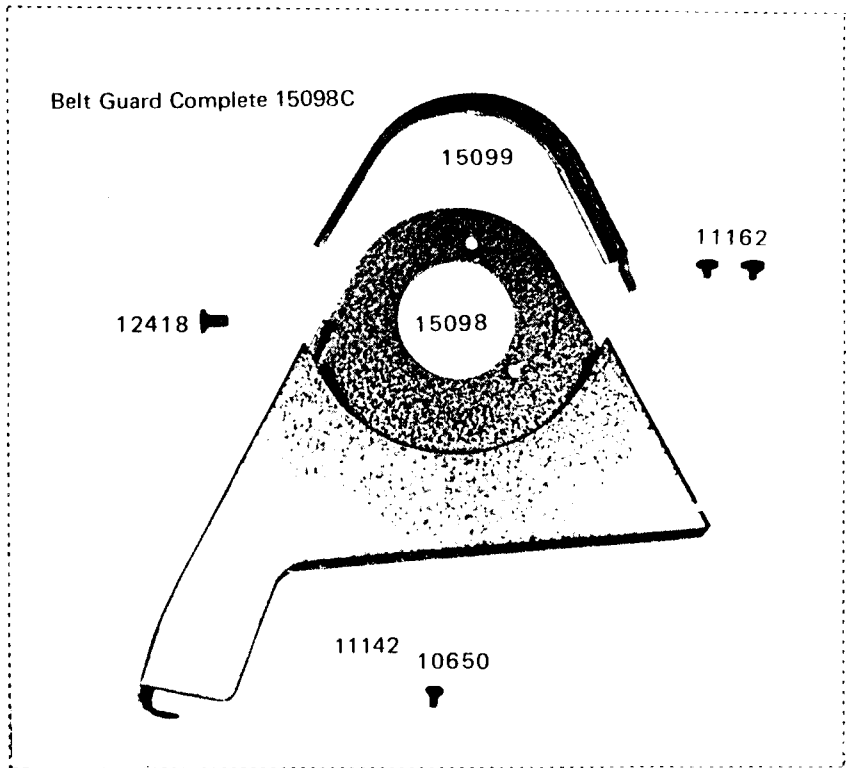


NOTE! WHEN ORDERING PARTS, PREFIX ALL NUMBERS WITH CS, EXAMPLE CS \_\_\_\_\_

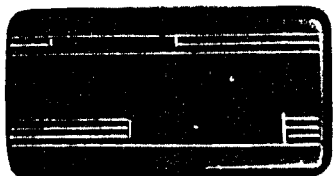
1 2 3 4 5 6 7 8 9 10 11 12 13 14 15

A  
B  
C  
D  
E  
F  
G  
H  
J  
K  
L

**BELT GUARD (Optional Equipment)** ベルトガード (別注品)



**ACCESSORIES 付属品**

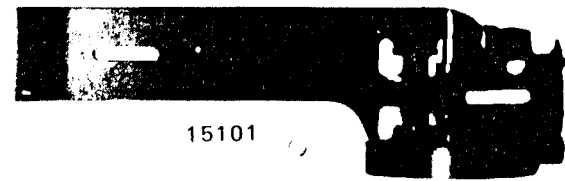


8132



16408

Cat. No  
1992



15101



10748

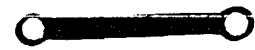




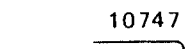
L  
M  
N  
O  
P  
Q  
R  
S  
T  
U  
V



8118



10748



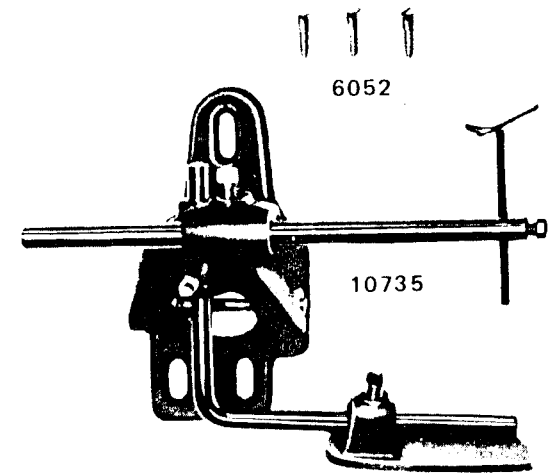
10747



6057



8125



6052

10735



8120



8121



11171



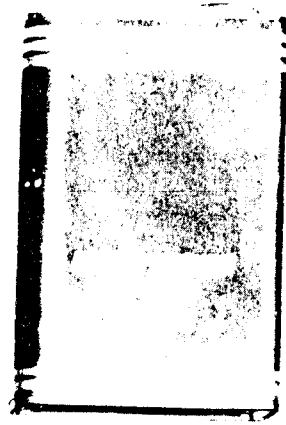
6052



11170



11169

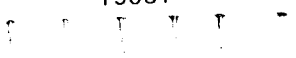


11193

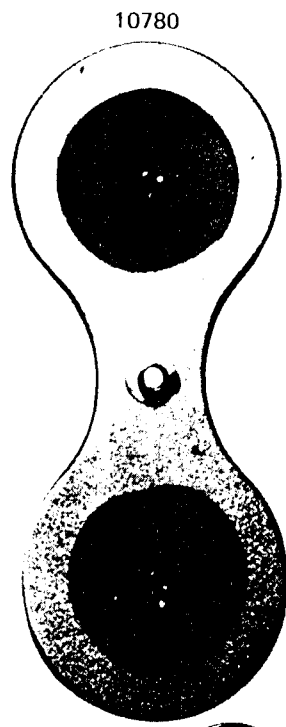
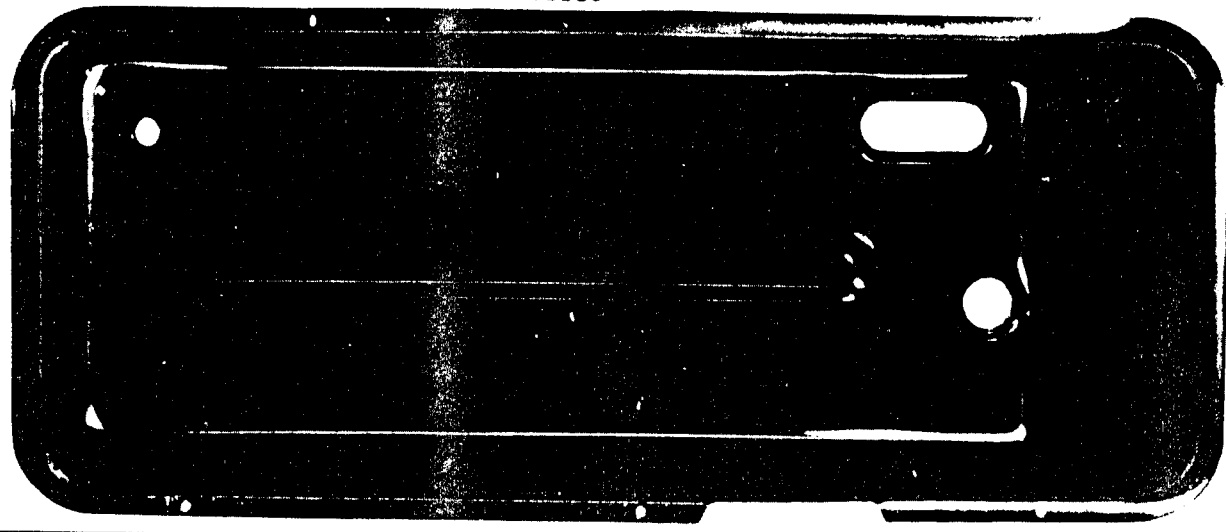


15082

15081



15080



10780



NOTE! WHEN ORDERING PARTS, PREFIX ALL NUMBERS WITH CS, EXAMPLE CS \_\_\_\_\_