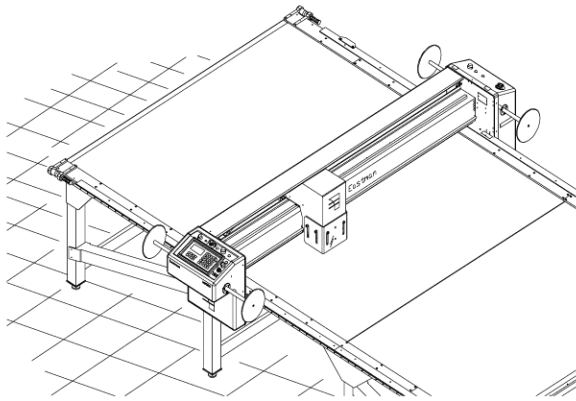


THE EASTMAN

Stop Disk Installation Guide



The Stop Disks are design for quick and easy installation with optimal performance. Before you begin installation, please read the instructions carefully. Familiarize yourself with all the components required.

Tools Required for installation:

- Drill
- Allen Wrench Set
- Screw Driver
- 1 1/2" Drill Bit or 1 1/2" Hole Saw
- 7/32 (.219) Drill Bit
- Wire Cutters
- Wire Crimper or Pliers

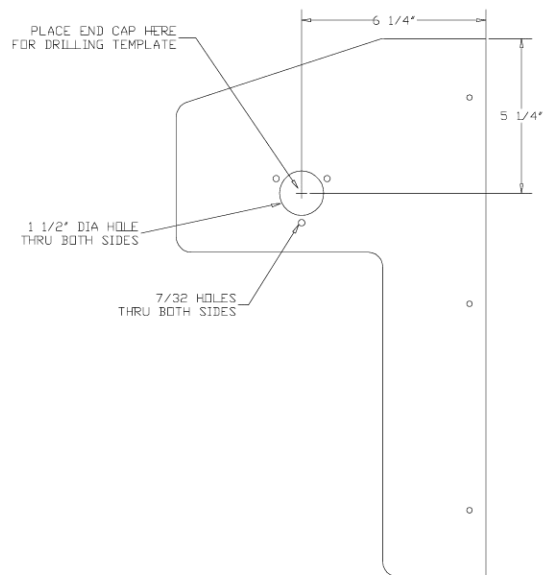
Front Stop Disk Assembly Installation



Warning

Disconnect power source before installation.

- 1) Disconnect the main power to the gantry.
- 2) Remove the screws and washers holding the front cover. Remove the front cover.
- 3) Disconnect and remove the existing pressure sensitive stop pads at the pause switch.
- 4) Modify the front cover as shown. Drill a 1 1/2" hole and three 7/32" holes on each side of the front cover using the end caps as a template.
- 5) Assembly the stop assembly as shown on page 2. Adjust the limit switch to ensure proper switch actuation. Adjust the down plunger to apply pressure to the stop disk rod. Check for proper movement.
- 6) Install the stop disk wiring harness to the pause switch located on the front control panel.
 - Connect the white wire to the white wire on the pause switch.
 - Connect the brown wire to the brown wire on the pause switch.



Front Cover Print

- Replace the blue wire on the emergency stop switch with the blue wire from the stop disk wiring harness.
 - Splice the remaining blue wire on the stop disk wiring harness to the blue wire removed from the emergency stop switch using the splice connector provided.
 - Secure the harness using the tytraps provided.
- 7) Install the front cover by connecting the wiring harness and securing the screws and washer.
 - 8) The stop disks require PlotterW software version 4.17C or higher. Verify your version and install if required.

Note: Your machine will not run with the front cover removed and the harness disconnected.

Back Stop Disk Assembly Installation



Warning

Disconnect power source before installation.

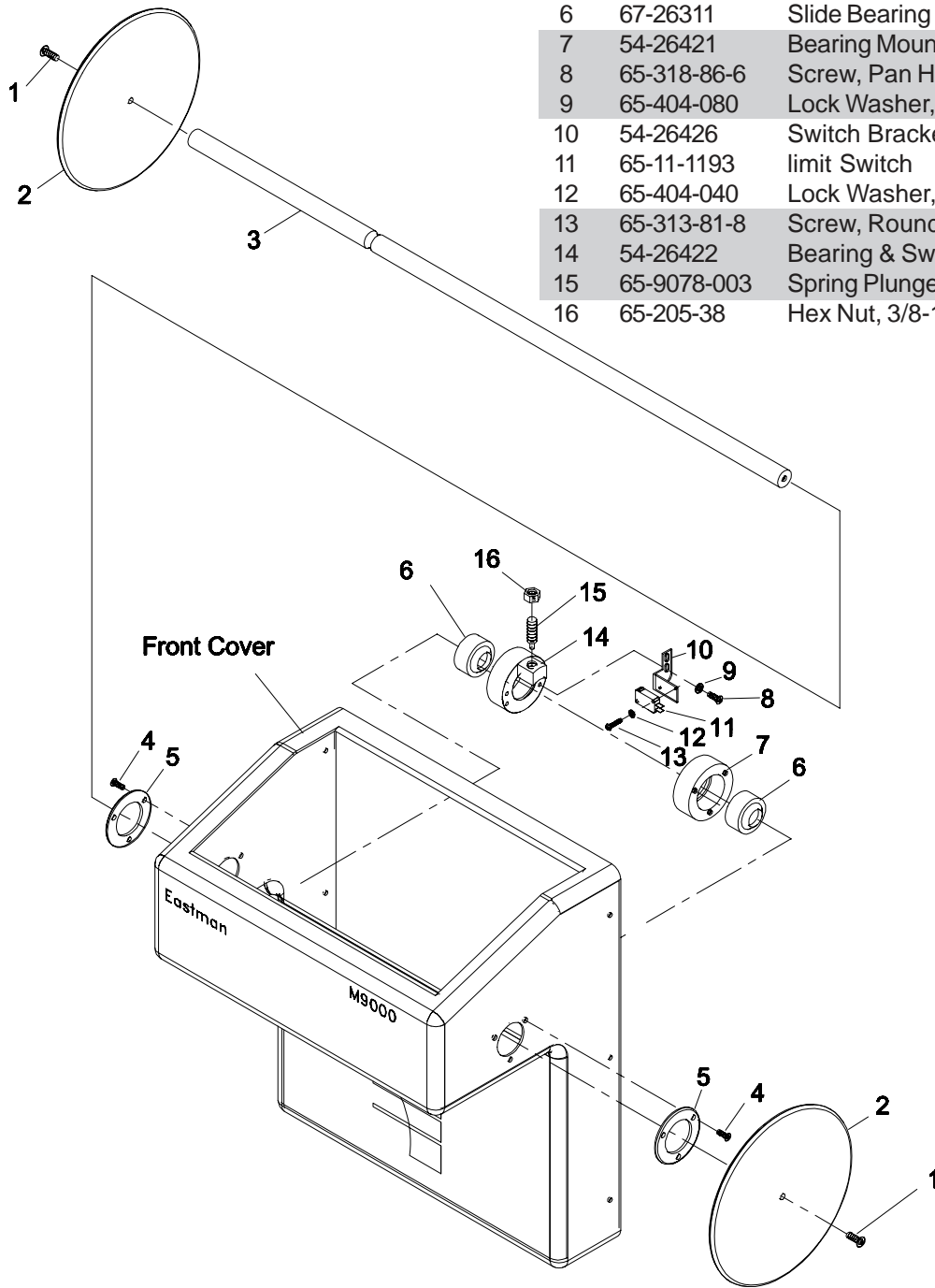
- 1) Disconnect the main power to the gantry.
- 2) Remove the screws and washers holding the back cover. Disconnect the wiring harness to the gantry. Remove the back cover.
- 3) Disconnect and remove the existing pressure sensitive stop pads at the pause switch.
- 4) Modify the back cover as shown. Drill a 1 1/2" hole and three 7/32" holes on each side of the back cover using the end caps as a template.

Continued on page 4

Front Cover Assembly

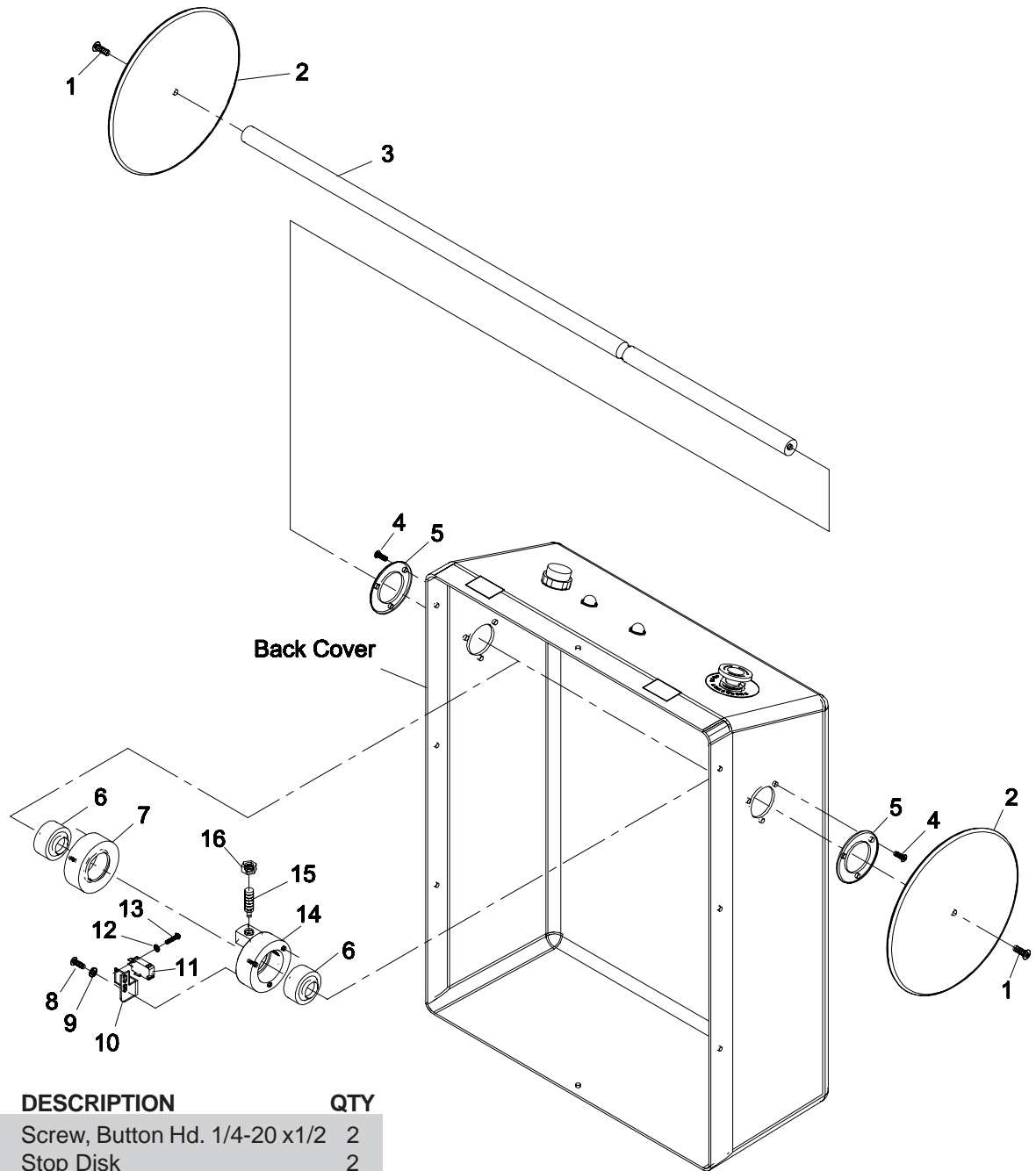
68-26080

ITEM	PART No.	DESCRIPTION	QTY
1	65-333-34-8Z	Screw, Button Hd. 1/4-20 x 1/2	2
2	54-26419	Stop Disk	2
3	54-26420	Rod, Stop Disk	1
4	65-333-102-8S	Screw, Button Hd. 10-32 x 1/2	6
5	54-26423	End Cap	2
6	67-26311	Slide Bearing	2
7	54-26421	Bearing Mount	1
8	65-318-86-6	Screw, Pan Head #8-32 x 3/8	2
9	65-404-080	Lock Washer, #8 Internal	2
10	54-26426	Switch Bracket	1
11	65-11-1193	limit Switch	1
12	65-404-040	Lock Washer, #4 External	2
13	65-313-81-8	Screw, Round Hd. #4-40 x 1/2	2
14	54-26422	Bearing & Switch Mount	1
15	65-9078-003	Spring Plunger, 3/8-16	1
16	65-205-38	Hex Nut, 3/8-16	1



Back Stop Disk Assembly

68-26081



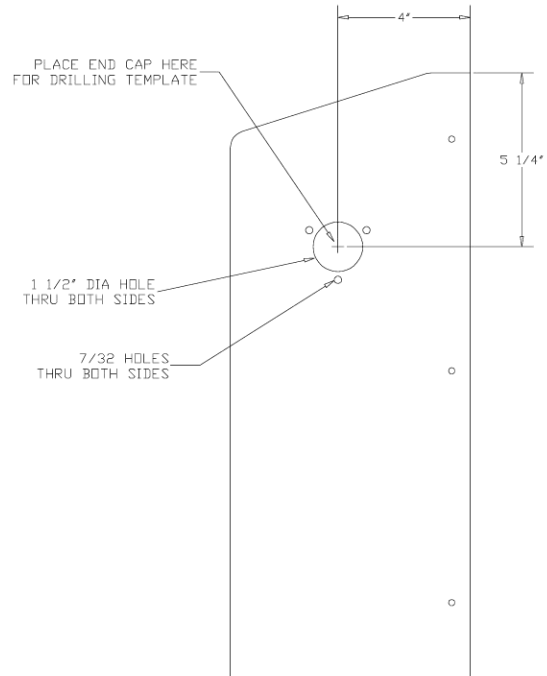
ITEM	PART No.	DESCRIPTION	QTY
1	65-333-34-8Z	Screw, Button Hd. 1/4-20 x1/2	2
2	54-26419	Stop Disk	2
3	54-26420	Rod, Stop Disk	1
4	65-333-102-8S	Screw, Button Hd. 10-32 x 1/2	6
5	54-26423	End Cap	2
6	67-26311	Slide Bearing	2
7	54-26421	Bearing Mount	1
8	65-318-86-6	Screw, Pan Head #8-32 x 3/8	2
9	65-404-080	Lock Washer, #8 Internal	2
10	54-26426	Switch Bracket	1

ITEM	PART No.	DESCRIPTION	QTY
11	65-11-1193	limit Switch	1
12	65-404-040	Lock Washer, #4 External	2
13	65-313-81-8	Screw, Round Hd. #4-40 x 1/2	2
14	54-26422	Bearing & Switch Mount	1
15	65-9078-003	Spring Plunger, 3/8-16	1
16	65-205-38	Hex Nut, 3/8-16	1

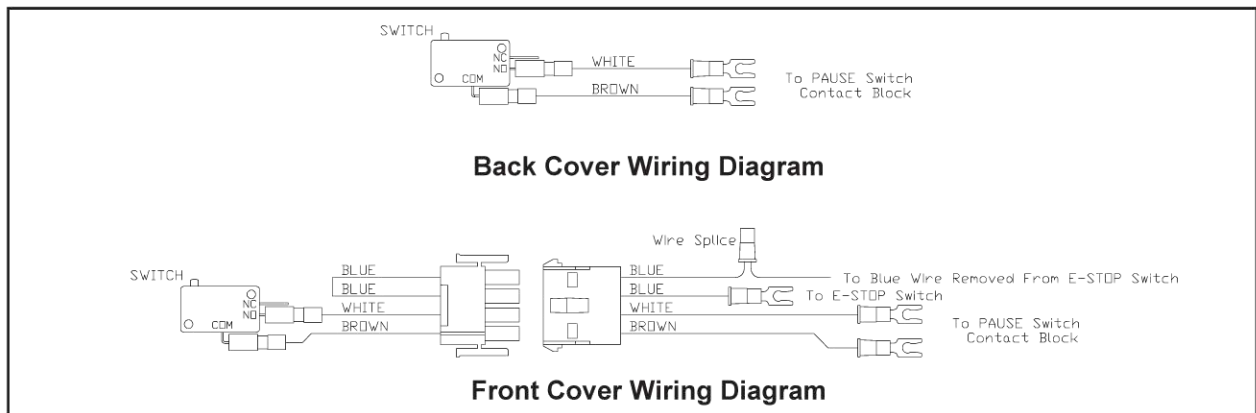


- 5) Assemble the stop assembly as shown on page 3. Adjust the limit switch to ensure proper switch actuation. Adjust the down plunger to apply pressure to the stop disk rod. Check for proper movement.
- 6) Install the stop disk wiring harness to the pause switch located on the back cover.
 - Connect the white wire to the white wire on the pause switch.
 - Connect the brown wire to the brown wire on the pause switch.
 - Secure the harness using the tyraps provided.
- 7) Install the back cover by connecting the wiring harness and securing the screws and washer.
- 8) The stop disks require PlotterW software version 4.17C or higher. Verify your version and install if required.

Note: Your machine will not run with the back cover removed and the harness disconnected.



Back Cover Print



Limited Warranty. Eastman warrants to the buyer that the equipment shall be free from defects in materials or workmanship for a period of 90 days commencing on the date of invoice. Any goods or parts claimed by the buyer to be defective must be returned to Eastman, freight charges prepaid, within the 90-day warranty period. If Eastman determines that the goods or parts are defective in materials or workmanship, Eastman's sole obligation under this warranty shall be, at Eastman's sole option, to repair or replace the defective goods or parts or to provide the buyer a credit equal to the portion of the purchase price allocable to the defective goods or parts. This warranty shall not apply if defects are caused by product misuse or neglect, if the machine has been altered or modified by the buyer, or if other than genuine Eastman belts, emery wheels, knives or parts are used in the machine. THIS WARRANTY IS THE ONLY WARRANTY APPLICABLE TO THIS PURCHASE. SELLER DISCLAIMS ALL OTHER WARRANTIES, EXPRESS OR IMPLIED, INCLUDING, BUT NOT LIMITED TO, THE IMPLIED WARRANTIES OF MERCHANTABILITY AND FITNESS FOR A PARTICULAR PURPOSE.

Limitation of Liability. Eastman's liability to the buyer, and the buyer's remedies from Eastman, whether in contract, negligence, tort, under any warranty or otherwise, shall be limited to the remedies provided in the foregoing Limited Warranty. In no event shall Eastman have any responsibility or liability to the buyer for (a) any special, indirect, incidental, or consequential damages, including, but not limited to, loss of use, revenue, or profit, even if Eastman has been advised of the possibility of such damages, or (b) any claim against the buyer by any third party. The price stated for the product sold is a consideration for limiting Eastman's liability.