

FINEST QUALITY

Union Special®

LEWIS • COLUMBIA

**INDUSTRIAL
SEWING
MACHINES**

STYLE
51300 BU

LIST OF PARTS
FOR
CLASS 51300

CATALOG
NO.
104 N

Union Special MACHINE COMPANY

CHICAGO

Catalog No. 104 N
(Supplement to 104 L)

LIST OF PARTS

CLASS 51300

Style

51300 BU

The parts listed in this catalog are
furnished at list prices for repairs only.

First Edition

Copyright 1960

by

Union Special Machine Co.
Rights Reserved in All Countries

Union Special

MACHINE COMPANY

INDUSTRIAL SEWING MACHINES

CHICAGO

Printed in U.S.A.

IDENTIFICATION OF MACHINES

Each Union Special machine is identified by a Style number which is stamped into the name plate.

Machines similar in construction are designated by a Class number which contains no letters. Letters suffixed to the Class number indicate the individual Standard machine style. Letter "Z", however, is reserved as a suffix to the Standard style identification to specify machine is of Special construction.

APPLICATION OF CATALOG

This is a supplement to Catalog No. 104 L and should be used in conjunction therewith. Only parts found on Style 51300 BU, but not on 51300 BG and illustrated. Opposite the illustrated page is listed each part by number, name, and amount required, which have been itemized by detail reference numbers.

This catalog applies specifically to the Standard style of machine as listed herein. It can also be applied with discretion to some Special machines in this Class. References to direction such as right, left, front, back, etc., are given from the operator's position while seated at the machine.

DESCRIPTION OF MACHINE

High Speed Streamlined Flat Bed, Medium Throw, Top Grip Feed, One Needle, Light Weight Presser Bar and Needle Bar Driving Mechanism, Needle Bearing Needle Bar Drive, Single Reservoir Enclosed Automatic Lubricating System and Filter Type Oil Return Pump, Oil Pump Base Plate, Oil Siphon Assembly, Lateral Looper Travel, Work Space to Right of Needle Bar 1 Inch; Necessitated by the Top Feed Mechanism. Top Grip Feed Recessed in Presser Foot, Moves Horizontally, Matches Bottom Feed to Grip and Pull Material Through Machine.

51300 BU For edge seaming operations on trousers, slacks, dress pants, jackets, and similar garments of light to medium weight materials. Seam Specification 401-SSa-1. Stitch range 9 to 16 per inch.

IDENTIFYING PARTS

Where construction permits, each Union Special part is stamped with its catalog number. A part too small for its complete catalog stamping is identified by a letter symbol which distinguishes it from another part similar in appearance.

Each part number represents the same part regardless of catalog in which it appears.

IMPORTANT! ON ALL ORDERS, PLEASE INCLUDE PART NAME AND STYLE OF MACHINE FOR WHICH PART IS ORDERED.

TERMS

Prices are strictly net cash and are subject to change without notice. All shipments are forwarded at the buyer's risk f. o. b. shipping point. Parcel Post shipments are insured unless otherwise directed. A charge is made to cover the postage and insurance.

NEEDLES

Each Union Special needle has both a type number and a size number. The type number denotes the kind of a shank, point, length, groove, finish, and other details. The size number, stamped on the needle shank, denotes the largest diameter of the blade measured in thousandths of an inch midway between the shank and the eye. Collectively, type number and size number represent the complete symbol.

Selection of proper needle size should be determined by the size of the thread used. Thread should pass freely through the needle eye in order to produce a good stitch formation.

For best results, use only genuine Union Special needles in the operation of this machine. They are packaged under our brand name, *Union Special* which is backed by a reputation for producing highest quality needles for more than three-quarters of a century.

To have needle orders promptly and accurately filled, forward a sample needle, the empty package, or description on label. A complete order would read as follows: "1000 Needles, Type 128GAS, Size 040".

Description and Sizes

128GAS Short, double groove, struck groove, ball eye, spotted, chromium plated - sizes 032, 036, 040, 044, 049, 054, 060.

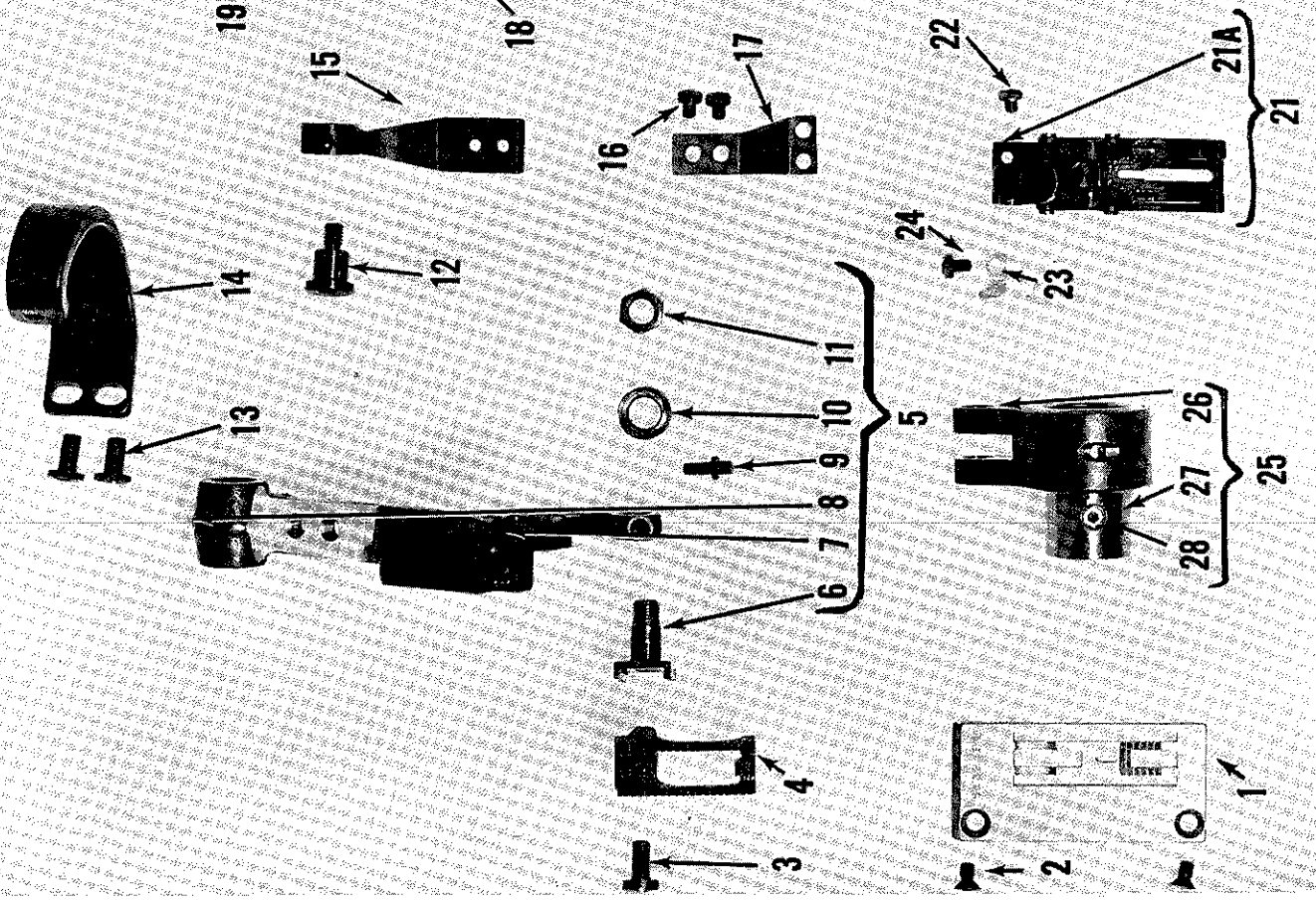
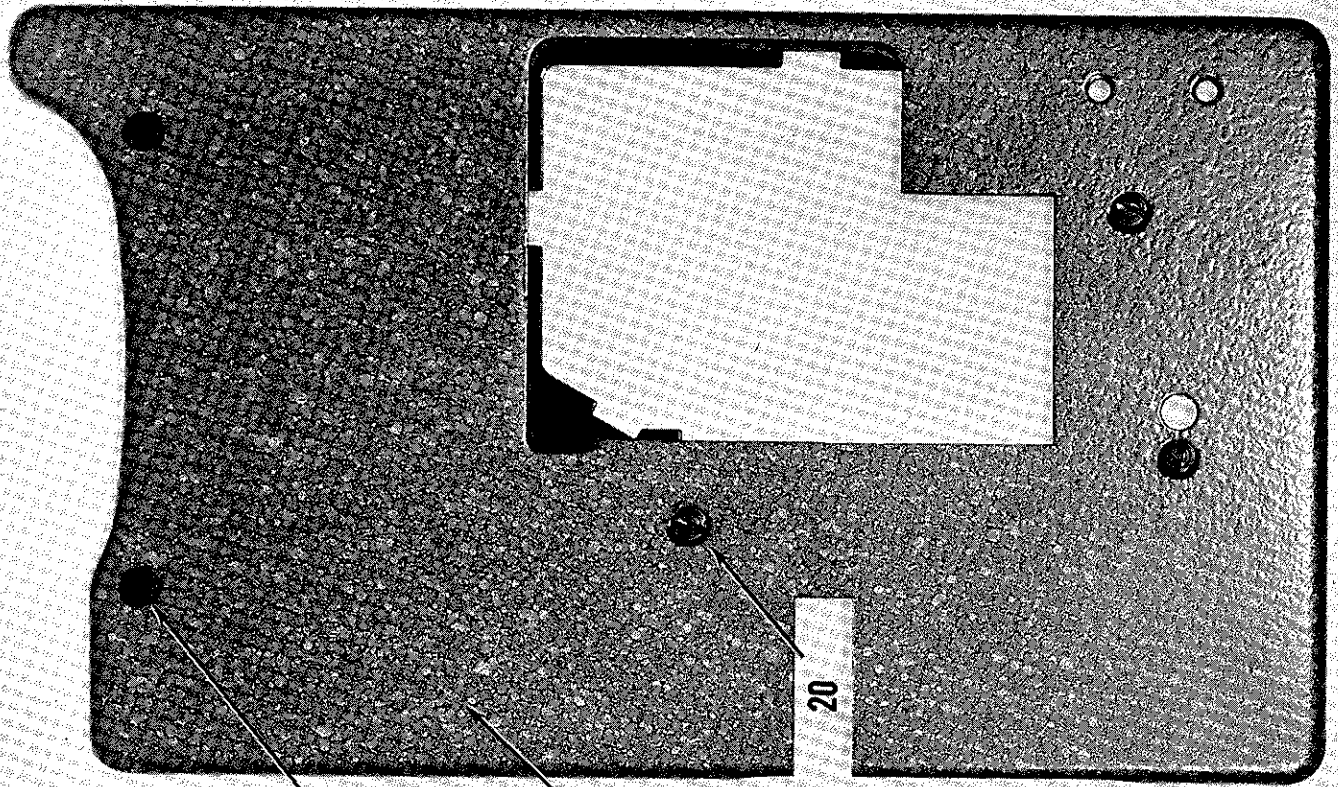
Standard needle for Style 51300 BU is Type 128GAS in size 040.

OILING

The oil has been drained from the machine before shipping, and the reservoir must be filled before beginning to operate. Use a straight mineral oil with a Saybolt viscosity of 200 to 250 seconds at 100° Fahrenheit.

Oil is filled at spring cap in the top cover, and the level is checked at the sight gauge on the front of the machine. Oil level should be maintained between the red lines on the gauge. The capacity of the oil reservoir is twelve ounces.

A daily check before the morning start should be made and oil added as required. Oil which has gone through the machine is filtered and pumped back into the main reservoir, making too frequent oilings unnecessary. Excessive oil in the main reservoir may be drained at the plug screw in the main frame directly under the handwheel. After draining oil, wipe the hole and plug screw dry, paint the hole and screw with a little gasket cement and reassemble screw.



The parts illustrated on the preceding page and described below represent parts used on Style 51300 BU, but are not used on Style 51300 BG.

Refer to picture on the bottom of this page for assembling parts represented on the preceding page and described below.

Use Catalog No. 104 L for all parts not illustrated or described here.

<u>Ref. No.</u>	<u>Part No.</u>	<u>Description</u>	<u>Amt. Req.</u>
1	51324 F	Throat Plate -----	1
2	87	Screw, for throat plate-----	2
3	22528	Screw, for feed dog-----	1
4	51305 F	Feed Dog -----	1
5	51334	Feed Bar -----	1
6	51134 H	Feed Dog Holder -----	1
7	538	Feed Dog Height Adjusting Screw -----	1
8	22560 B	Screw-----	1
9	22863	Feed Dog Holder Adjusting Screw -----	1
10	51134 J	Washer -----	1
11	258 A	Nut -----	1
12	22758 G	Screw -----	1
13	376 A	Screw -----	2
14	51334 A	Feed Foot Driving Arm -----	1
15	51334 D	Connecting Rod-----	1
16	28	Screw -----	2
17	51334 C	Connecting Rod Flat Spring -----	1
18	51301 H	Cloth Plate -----	1
19	22839 C	Screw, for cloth plate-----	2
20	80	Screw, for cloth plate-----	3
21	51320 F	Presser Foot -----	1
21A	51330 N	Presser Foot Feeding Section -----	1
22	22561	Screw -----	1
23	51330 S	Chain Cutting Knife -----	1
24	28	Screw -----	1
25	29476 DV	Feed Lift Eccentric Assembly -----	1
26	51145 A	Eccentric Bearing-----	1
27	51406	Eccentric, .062 inch throw-----	1
28	22894 D	Screw -----	1

