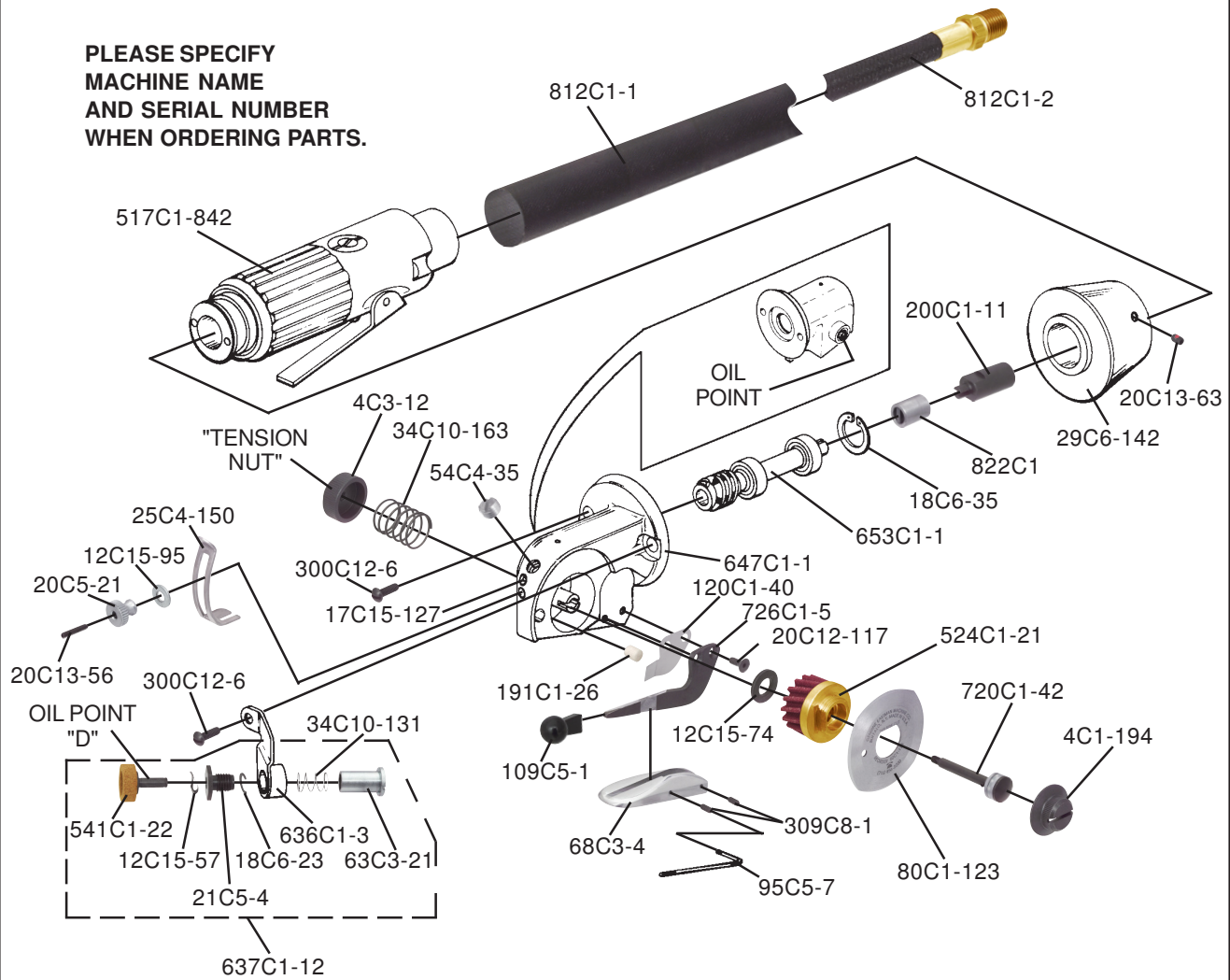


"Genuine" Parts For Eastman Buzzair™

Model Buzzair

PLEASE SPECIFY
MACHINE NAME
AND SERIAL NUMBER
WHEN ORDERING PARTS.



Univ. Number	Eastman Number	Description
GE2004	4C1-194	Knife Lock Nut
GE2005	4C3-12	Adjusting Nut
GE1663	12C15-57	Spring Washer
GE1739	12C15-74	Thrust Washer
GE2006	12C15-95	Washer (For Knife Guard)
	17C15-127	Pin
GE1785	18C6-23	Retaining Ring
	18C6-35	Retaining Ring
GE2008	20C5-21	Clamp Screw
GE1416	20C12-117	Flat Head Screw (6-32 x 3/8")
GE2009	20C13-56	Socket Set Screw (6-32 x 3/4")
GE1696	20C13-63	Set Screw
GE1790	21C5-4	Sharpener Bushing
GE2010	25C4-150	Knife Guard
	29C6-142	Motor Adapter
GE1792	34C10-131	Sharpener Spring
GE2011	34C10-163	Knife Spring
GE1482	54C4-35	Plug
GE1795	63C3-21	Sharpener Button
GE2012	68C3-4	Shear Plate Foot

Univ. Number	Eastman Number	Description
GE1291	80C1-123	Knife
	95C5-7	Allen Key
GE1841	109C5-1	Ball Tip
GE1905	120C1-40	Knife Plow
GE2013	191C1-26	Oil Felt
GE2014	200C1-11	Driver (For Motor Shaft)
GE2015	300C12-6	Round Head Screw (8-32 x 1/2") (2)
GE2016	309C8-1	Socket Set Screw (4-40 x 1/4") (2)
	517C1-842	Air Motor
GE1911	524C1-21	Knife Gear
GE1201	541C1-22	Sharpening Stone
	636C1-3	Sharpener Bracket
GE2017	637C1-12	Sharpener, Complete
	647C1-1	Standard Housing
	653C1-1	Worm, Complete
GE2018	720C1-42	Knife Rod, Complete
GE1913	726C1-5	Shear Plate
GE2019	817C1-1	Exhaust Over Hose
GE2020	817C1-2	Air Intake Hose
GE2021	822C1	Motor Coupling