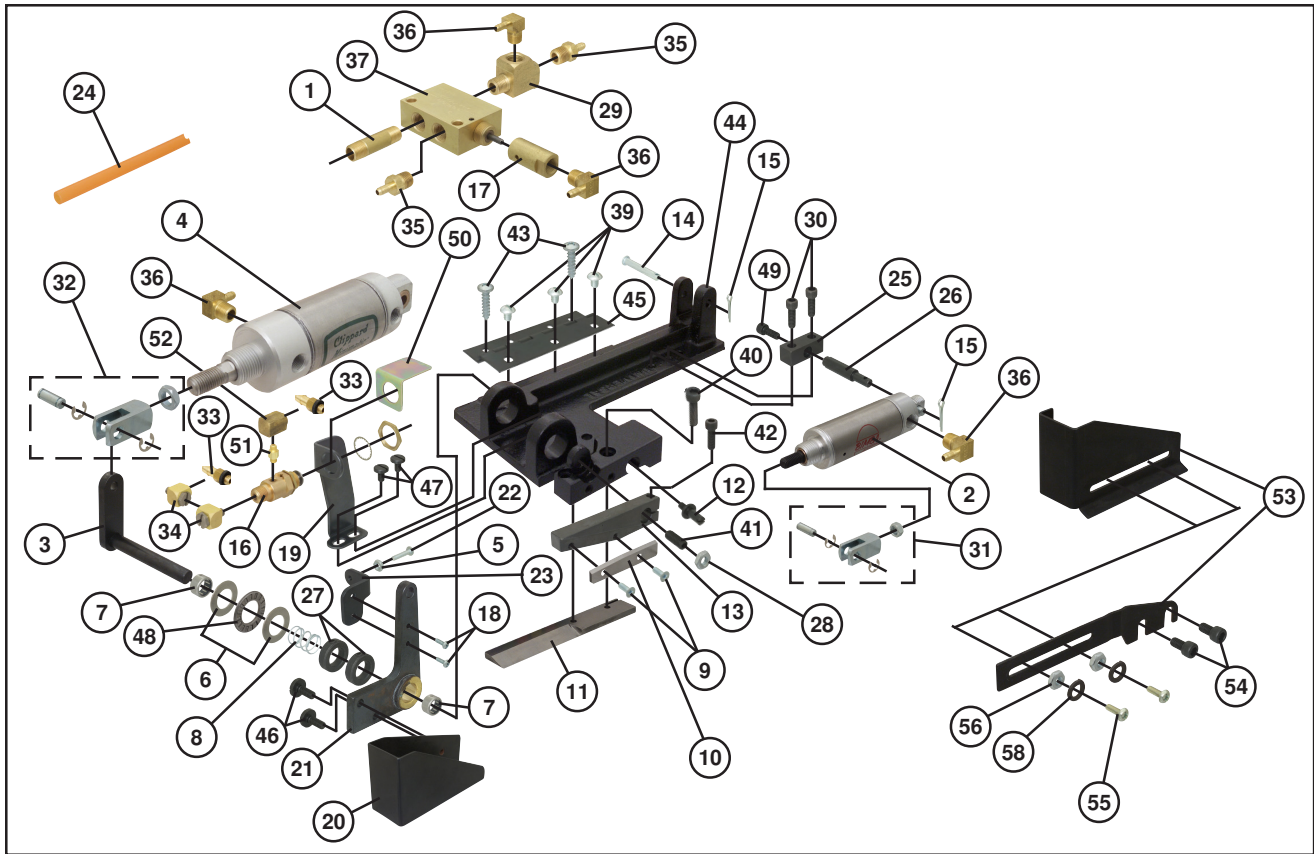


Parts For Universal & Clinton Heavy Duty Cutters

#11689, #11955, #11707,
#12650, #13507 & #13508

Labor Saving Devices



No.	Fig.	Description	Clinton No.
10006	1	Nipple (1/8" x 1-1/2") ** (1)	
10012	2	Bimba Air Cylinder ** (1)	
10271	3	Shaft Assembly (1)	#10-0391-01
10289	4	Air Cylinder (1)	
12692	5	4-40 Hex Nut ** (1)	
10307	6	Thrust Bearing Race (2).....	#30-0312-01
10334	7	1/2" x 11/16" x 3/8" Ndl. Bearing (2) .	#30-0381-01
10351	8	Compression Spring (1)	#30-0382-01
10384	9	10-32 x 1/2" F.H.M. Screw (2)	#30-0739-01
10422	10	2-1/2" Top Knife (1)	#01-1511-11
10445	10	3" Top Knife (1)	#01-1511-31
10436	10	4" Top Knife (1)	#01-1511-21
10454	11	2-1/2" Bottom Knife (1)	#01-1536-11
10393	11	3" Bottom Knife (1)	#01-1536-21
10463	11	4" Bottom Knife (1)	#01-1536-31
10472	12	Adjusting Stud (1).....	#01-1515-01
10509	13	Top Blade Holder (1)	#01-1506-01
10683	14	Cylinder Mtg. Pin (1/4" x 1-1/2") (1) .	#01-4524-31
10692	15	Cotter Pin (5/64" x 3/4") (2)	#30-0887-01
10910	16	3-Way Valve ** (1)	
11070	17	Pilot ** (1)	
11446	18	Screw (P.H.M.S.) ** (2)	
12402	19	Valve Bracket ** (1)	#01-7344-01
12403	20	Guard (2-1/2" & 3" Cutters) ** (1)	#10-1011-01
13516	20	Guard (For 4" Cutter) ** (1).....	
12404	21	Arm w/Bushing ** (1)	#10-0783-01
12405	22	Screw (4-40 x 1/2" P.H.M.S.) ** (1)	
12507	23	Actuator ** (1)	#01-7345-01
12571	24	Poly-Flo Hose (1/4" x 12') * & ** (1) .	#30-0287-01
12571	24	Poly-Flo Hose (1/4" x 5') * & *** (1) ..	#30-0287-01
12643	25	Pin Block ** (1)	#01-6324-01
12645	26	Block Pin ** (1)	#01-6348-02
12652	27	Shaft Collar ** (2)	#01-6319-01
1797	27	1/2" Shaft Collar *** (1)	
19324	27	Socket Set Screw (For Shaft Collar) ** (2)	
13768	28	10-32 Hex Nut (1)	
16247	29	1/8" Street Tee ** (1)	

No.	Fig.	Description	Clinton No.
16324	30	Slotted Cap Screw (1/4-20 x 3/4") ** (2)	
16555	31	Clevis Assembly ** (1 Set)	
16557	32	Clevis Assembly (1 Set)	
16608	33	Tube Fiting (10-32 x 1/4") ** (2)	
16779	34	Swivel Elbow w/Gasket (10-32) ** (3)	
18406	35	Male Connector (1/4" x 1/8") ** (2) ..	#30-0283-01
18410	36	Tube Elbow (1/8" x 1/4") (4)	
18407	—	Male Connector (1/4" x 1/4") *** (1)	
18541	37	4-Way Valve ** (1)	
18695	39	1/4-20 x 5/16" R.H.M. Screw (3)	
18696	40	10-32 x 5/8" S.H.C. Screw (2)	
18698	41	10-32 x 1/2" Socket Set Screw (1)	
18699	42	1/4-28 x 3/4" S.H.C. Lock Screw (1).....	
18773	43	#14 x 1" (Type A) Self-Tapping Screw (2)	
18783	44	Mounting Plate (1)	
18784	45	Mounting Plate Hinge (1)	#10-0203-01
18970	46	Screw ** (2)	#01-3061-11
54457	47	Screw ** (2)	
55952	48	Thrust Bearing (1).....	#30-0311-01
16528	49	10-32 x 1/2" S.H.C. Screw ** (1)	
12991	50	Valve Safety Guard (1)	
16986	51	10-32 Coupling (1)	
12995	52	10-32 Female Valve (1)	
10523	53	Adjustable Knife Guard *** (1)	#01-1538-01
18697	54	10-32 x 3/8" Screw (S.H.C.) *** (2)	
18700	55	5-40 x 3/8" Screw (P.H.M.) *** (2)	
18715	56	5-40 Hex Nut *** (2)	#33-1505-01
18729	58	#6 S.A.E. Flat Washer *** (2)	

Note: Universal Cutter Parts are interchangeable with Clinton Cutters.

- * Sold only in 100 foot coils when purchased separately.
- ** For Safety Air Operated Tape Cutters
- *** For Standard Operated Tape Cutters